

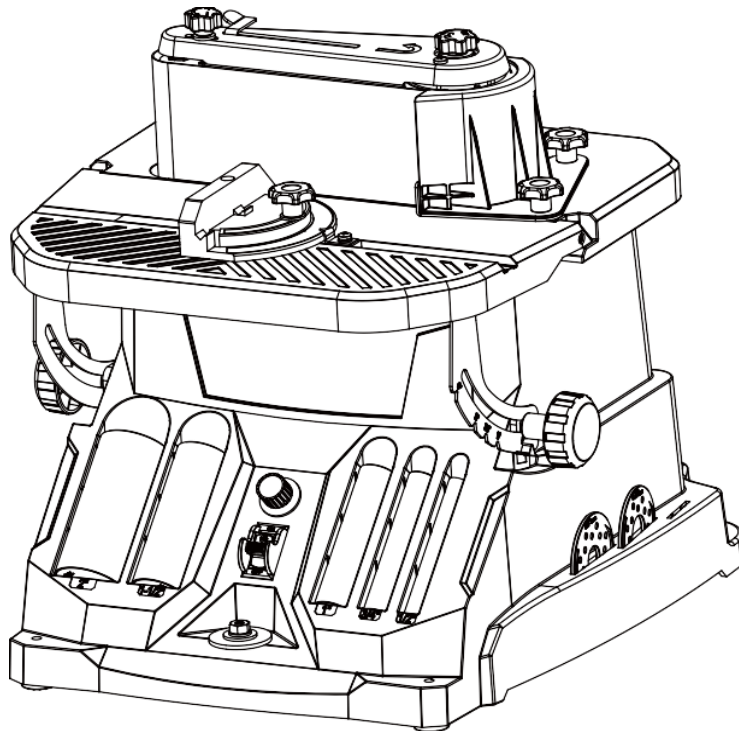


Busy Bee Tools

BBSDOSVS

VARIABLE SPEED OSCILLATING SPINDLE AND BELT SANDER

User Manual



COPYRIGHT © 2026 BY BUSY BEE TOOLS LTD.

V1.0-2026

NO PORTION OF THIS MANUAL MAY BE
REPRODUCED WITHOUT THE WRITTEN CONSENT
OF BUSY BEE TOOLS LTD.



Contents

- Introduction 4
- Section 1: Machine Identification and Specifications 5
 - Specifications 6
- Section 2: Machine and Shop safety 6
 - General Shop Safety 6
 - Spindle Sander Safety Instructions 7
 - Electrical Safety 9
- Section 3: Package Content 10
- Section 4: Assembly and Operations 11
 - Assembly and Adjustments 11
 - Operating the Spindle Sander 14
 - Operating a Belt Sander 14
- Section 5: Maintenance and Troubleshooting 15
 - Safety Precautions for Maintenance 15
 - Routine Inspection 15
 - Cleaning and Storage 15
 - Lubrication 15
 - Troubleshooting 16
- Section 6: Diagram and Parts List 17
 - Diagram: 17
 - Parts List: 18
- Warranty 21

Introduction

We take great pride in introducing our model BBSDOSVS variable speed oscillating spindle and belt sander, which is a distinguished addition to the expanding Busy Bee Tools family of exceptional woodworking machinery. Adhering to the comprehensive guidelines outlined in this manual will ensure years of reliable and enjoyable performance in keeping with Busy Bee Tools' unwavering commitment to customer satisfaction.

We are delighted to provide you with this manual for the BBSDOSVS. It has been meticulously crafted to assist you in the assembly process, ensure safety compliance, and cover essential operational procedures. Our goal is to deliver comprehensive documentation possible to facilitate your experience. The specifications, drawings, and photographs featured in this manual accurately depict the BBSDOSVS as it was configured when this manual was produced. Nevertheless, adjustments and enhancements may be implemented at any time, with no obligation on Busy Bee Tools' part. In keeping with Busy Bee Tools' continuous improvement policy and to enhance your convenience, we maintain an up-to-date repository of Busy Bee Tools manuals on our website at www.busybeetools.com. Any updates or modifications to your machine will be promptly reflected in these manuals. We encourage you to visit our website regularly to access the latest revisions to this manual and to stay informed about your equipment's optimal operation. Your satisfaction and safety are our top priorities, and we are committed to ensuring that your experience with the BBSDOSVS variable speed spindle and belt oscillating sander machine is exceptional.

Should you require additional assistance or have further questions, please do not hesitate to contact our dedicated Customer Service and Technical Support Department at:

Email us at: cs@busybeetools.com

Call us Toll Free: 1-800-461-2879.

Busy Bee Tools Head Office

130 Great Gulf Drive

Concord ON, L4K 5W1

Or at any of our branches across Canada.

For more information visit our website www.busybeetools.com

Our team of experts is here to provide the guidance and support you need and ensure the safe and efficient operation of your machine. We are committed to assisting you in any way we can. Your satisfaction and safety are our top priorities.



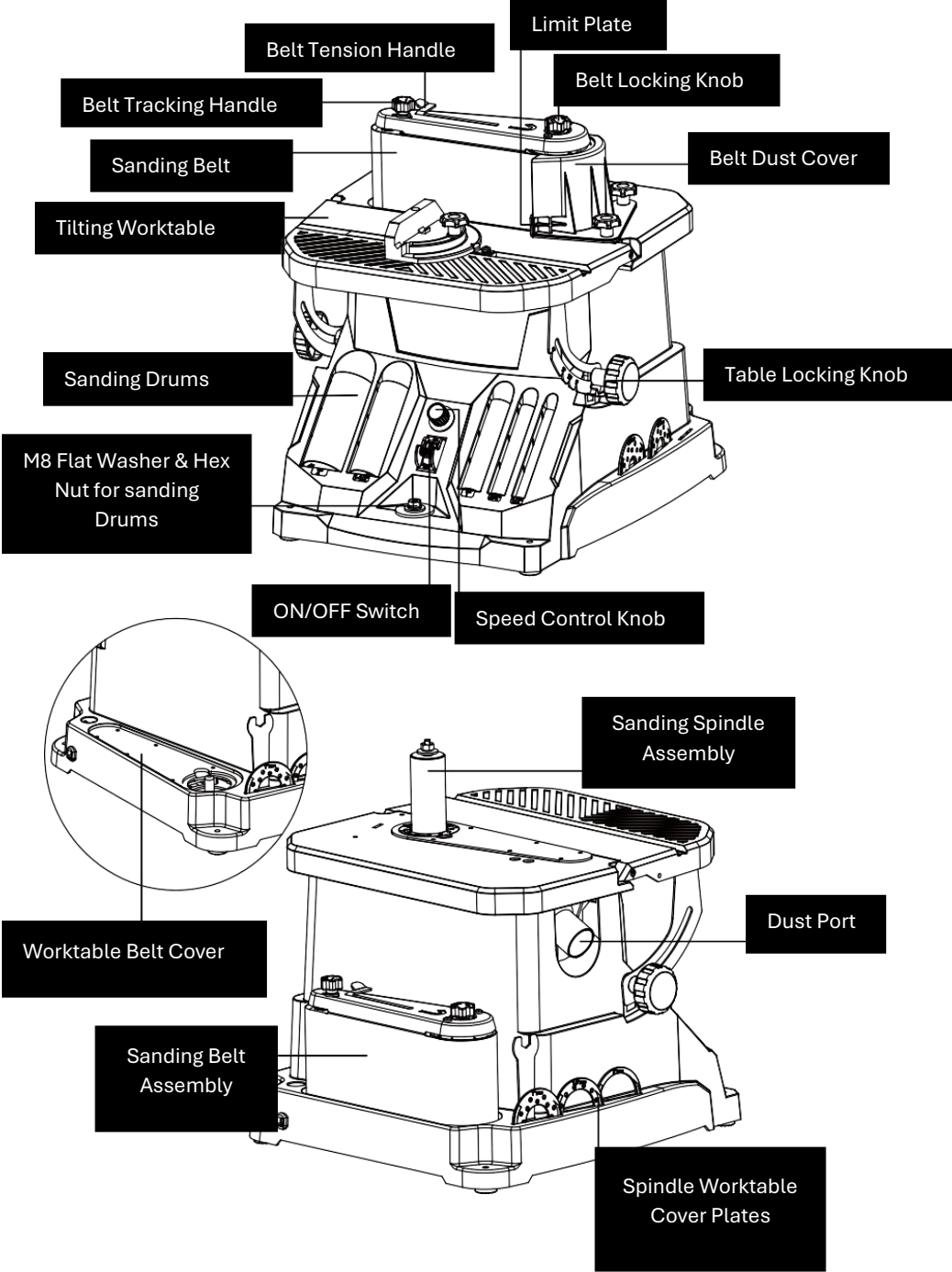
COPYRIGHT © 2026 BY BUSY BEE TOOLS LTD.

V1.0-2026

NO PORTION OF THIS MANUAL MAY BE
REPRODUCED WITHOUT THE WRITTEN CONSENT
OF BUSY BEE TOOLS LTD.



Section 1: Machine Identification and Specifications



Specifications

Power	120V, 60 Hz, 4A
No Load Speed	1000-1800RPM
Oscillations	29-58 OPM
Spindle Size	1/2"
Sanding Sleeve Sizes	1/2", 3/4", 1", 1-1/2", 2" (80 Grit)
Belt Size	4x24" (80 Grit)
Maximum Workpiece Height	4-1/2"
Weight	33.7 Pounds

Section 2: Machine and Shop safety

General Shop Safety

Read and understand all safety warnings and instructions before operating this tool. Failure to follow these instructions may result in electric shock, fire, and/or serious personal injury.

Safety Guidelines – Definitions

This section explains safety terminology used throughout this manual to alert the user to potential hazards and to provide instructions for safe operation.

Work Area Safety

1. Keep the work area clean and adequately illuminated. Cluttered or poorly lit areas increase the risk of accidents.
2. Do not operate power tools in explosive environments, including areas containing flammable liquids, gases, or dust. Power tools generate sparks that may ignite such materials.
3. Keep children and bystanders at a safe distance while operating a power tool. Distractions can result in loss of control.

Electrical Safety

1. Power tool plugs must match the power outlet. Do not modify the plug or use adapter plugs with grounded (earthed) tools. Properly matched plugs and outlets reduce the risk of electric shock.
2. Avoid contact with grounded surfaces such as pipes, radiators, stoves, and refrigerators.

Grounded contact increases the risk of electric shock.

3. Do not expose power tools to rain or wet conditions. Moisture entering the tool increases the risk of electric shock.
4. Handle the power cord properly. Do not use the cord to carry, pull, or unplug the tool. Keep the cord away from heat, oil, sharp edges, and moving parts. Damaged or tangled cords increase the risk of electric shock.
5. When operating a power tool outdoors, use an extension cord rated for outdoor use to reduce the risk of electric shock.
6. If operation in a damp location is unavoidable, use a Ground Fault Circuit Interrupter (GFCI) protected power supply. GFCI protection reduces the risk of electric shock.

Personal Safety

1. Remain alert and use sound judgment when operating a power tool. Do not operate the tool while fatigued or under the influence of drugs, alcohol, or medication. Inattention can result in serious injury.
2. Wear appropriate personal protective equipment (PPE). Always use eye protection. Additional protective equipment such as respiratory protection, non-slip safety footwear, and hearing protection should be used as required.
3. Prevent accidental starting. Ensure the power switch is in the OFF position before

connecting the tool to a power source, picking it up, or carrying it.

4. Remove all adjusting keys and wrenches before turning the tool ON. Tools left attached to rotating parts can cause serious injury.
5. Maintain proper footing and balance at all times. Proper stance improves control of the tool during unexpected situations.
6. Wear appropriate clothing. Do not wear loose garments or jewelry. Secure long hair and keep clothing away from moving parts to prevent entanglement.
7. If dust extraction or collection devices are provided, ensure they are properly connected and used. Effective dust collection reduces exposure to dust-related hazards.

Power Tool Use and Care

1. Do not force the power tool. Use the appropriate tool for the intended application. A properly selected tool will perform the task more efficiently and safely at its designed operating capacity.
2. Do not operate the power tool if the ON/OFF switch does not function correctly. Any tool that cannot be controlled by the switch is unsafe and must be repaired before use.
3. Disconnect the plug from the power source, and/or remove the battery pack, before adjusting, changing accessories, or storing the tool. These preventive measures reduce the risk of accidental startup.
4. Store power tools out of the reach of children. Do not allow individuals unfamiliar with the tool or these instructions to operate it. Power tools can be hazardous when used by untrained operators.
5. Maintain the power tool properly. Inspect for misalignment or binding of moving parts, broken components, or any condition that may impair safe operation. If damage is detected, have the tool serviced before use. Many accidents result from inadequate maintenance.
6. Keep cutting tools sharp and clean. Properly maintained cutting edges reduce the

likelihood of binding and improve control during operation.

7. Use the power tool, accessories, and attachments in accordance with these instructions, considering the working conditions and the specific task. Using the tool for unintended applications may result in hazardous conditions.
8. Secure the workpiece using clamps or a suitable holding device. Supporting the workpiece by hand or against the body may lead to loss of control.
9. Ensure all guards are properly installed and in good working condition before operating the tool.

Spindle Sander Safety Instructions

Do not operate this power tool until all instructions and warning labels have been read and fully understood.

1. Intended Use

This spindle sander is designed exclusively for sanding wood and wood-based materials. Sanding or grinding other materials may result in fire, personal injury, or damage to the workpiece. Use of this machine for purposes other than those intended may cause serious injury, damage the machine, and void the warranty.

2. Machine Mounting

For safe operation, the spindle sander must be securely mounted to a flat, rigid, and stable surface or an approved stand.

3. Personal Safety

- Always wear CSA approved safety glasses with side shields, appropriate hearing protection, and a dust mask or respirator.
- Do not wear loose clothing, jewelry, or accessories that could be drawn into moving parts. Secure long hair.
- Do not wear gloves while operating this machine.

4. Power Cord Safety

Keep the power cord away from heat sources, oil, sharp edges, and moving parts. Damaged or worn cords must be replaced or

repaired immediately by a qualified electrician.

5. **Tool and Accessory Inspection**

Before each use, inspect the tool and all accessories for damage, wear, or missing components. Do not operate the machine if any part is damaged or missing. Ensure all adjustments are correctly set, all fasteners are secure, and all guards are properly installed.

6. **Sanding Accessories**

- Do not use sanding sleeves or drums that are torn, damaged, or improperly secured. Replace worn or damaged sanding sleeves before operation.
- Always disconnect the machine from the power source before adjusting or changing sanding sleeves, rubber drums, or throat plates.
- Use only the throat plate that corresponds to the installed drum diameter to minimize the gap between the drum and throat plate opening, reducing the risk of workpiece catch or operator injury.

7. **Workpiece Requirements**

- Use only workpieces that are sufficiently rigid and structurally sound to withstand the forces generated by the sanding spindle.
- Inspect all workpieces for defects, cracks, nails, staples, or other embedded foreign objects prior to sanding. Do not sand material with suspected defects or foreign objects.
- Provide adequate external support when sanding large or oversized workpieces. Do not sand unsupported workpieces.
- Sand only one workpiece at a time.

8. **Prevention of Accidental Starting**

Ensure the power switch is in the OFF position before connecting the machine to the power supply. The switch must remain in the OFF position and the machine unplugged during cleaning, assembly, setup, adjustment, or when the tool is not in use.

- 9. Do not operate the sander until it is fully assembled and installed in accordance with the instructions provided in this manual.
- 10. Remove all scrap material, tools, and foreign objects from the table and sanding sleeve before switching the machine ON.

11. **Feeding the Workpiece**

- Allow the spindle to reach full operating speed before introducing the workpiece. Do not start the machine with the sanding sleeve in contact with the workpiece.
 - Observe the spindle rotation direction (counterclockwise). Always feed the workpiece against the direction of rotation.
 - Hold the workpiece firmly and guide it smoothly into the sanding sleeve using light, controlled pressure. Do not force the workpiece into the sanding surface.
- 12. Keep hands and fingers away from all moving parts during operation. Do not touch the sanding drum or spindle. When cleaning is required, use a brush or suitable tool to remove dust and debris never use your hands.
 - 13. Do not perform layout, assembly, adjustment, or setup operations on the table while the sander is running.
 - 14. After switching the sander OFF, allow the spindle to come to a complete stop before removing or handling the workpiece.
 - 15. Always turn the machine OFF and disconnect it from the power source before cleaning, adjusting, or changing accessories. Accidental startup may occur if the machine remains plugged in.

16. Cleaning

Do not use solvents to clean plastic components. Solvents may damage or degrade the material. Clean plastic parts using only a soft, damp cloth.

17. Replacement Parts

If any component of the sander is missing, damaged, or fails to operate properly, immediately switch the machine OFF and disconnect it from the power supply.

Replace defective or missing components using only identical replacement parts before resuming operation.

Electrical Safety

1. Polarized Plugs

This equipment is equipped with a polarized plug (one blade is wider than the other) to reduce the risk of electric shock. The plug will only fit into a polarized outlet one way. If it does not fully insert, reverse the plug. If it still does not fit, contact a qualified electrician to install a suitable outlet. **Do not modify the plug or the extension cord in any way.**

2. Ground Fault Circuit Interrupter (GFCI) Protection

A GFCI-protected circuit or outlet is recommended when operating this power tool to minimize the risk of electric shock.

3. Service and Repair

Electrical components must only be serviced or repaired by a qualified technician using original replacement parts to ensure safety and maintain proper operation.

Extension Cord Guidelines and Recommendations

When using an extension cord, select one capable of carrying the current required by the tool. Using an undersized cord may result in voltage drop, reduced tool performance, and overheating. The correct cord size depends on both cord length and the tool's amperage rating. When in doubt, choose a heavier-duty cord. Note that a smaller gauge number indicates a thicker, heavier-duty cord.

AMP	REQUIRED GAUGE FOR EXTENSION CORDS			
	25 ft.	50 ft.	100 ft.	150 ft.
4A	18 gauge	16 gauge	16 gauge	14 gauge

Extension Cord Safety and Electrical Requirements

1. Inspect Extension Cord Before Use

Ensure the extension cord is correctly wired and in good condition. Replace any damaged cord or have it repaired by a qualified professional before use.

2. Proper Handling of Extension Cord

Do not pull on the cord to disconnect it from the outlet; always disconnect by gripping the plug. Always disconnect the extension cord from the power source before disconnecting the tool. Protect the cord from sharp edges, excessive heat, and moisture or wet environments.

3. Dedicated Electrical Circuit

Operate the tool on a separate electrical circuit. The circuit should use a minimum of 12-gauge wiring and be protected by a 15 A time-delayed fuse. Before connecting the tool to the power source, ensure the switch is in the OFF position. Verify that the line voltage matches the rating specified on the motor nameplate. Operating at a lower voltage may cause motor damage.

Section 3: Package Content

Packing List:

80-Grit Sanding Sleeves (5)

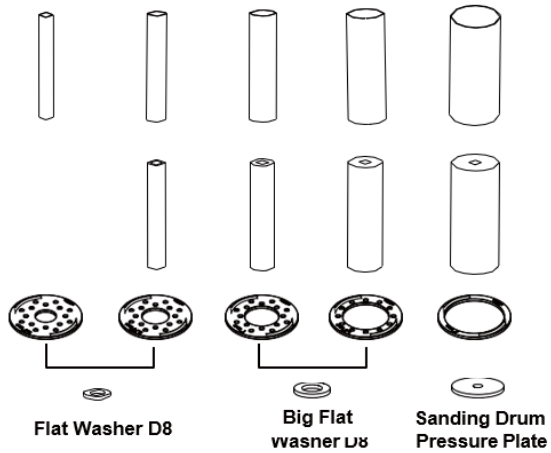
Rubber Sanding Drums (4)

Note: 1/2" Sanding sleeve fits on the spindle.

Sanding Throat Plates (5)

Upper Spindle Washer Size

1/2" (13 mm) 3/4" (19 mm) 1" (26 mm) 1-1/2" (38 mm) 2" (51 mm)



Driven Shaft



Wrench



Hex Nut M8



Washer(white)



Belt Locking Handle



Belt Workbench Cover Plate



Connector



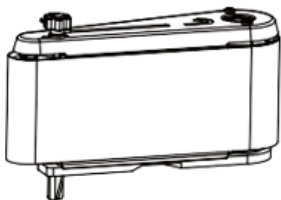
Limit Plate



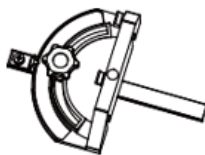
Belt Dust Cover



Locking Handle



Sanding Belt Assembly



Miter Gauge



Spanner For The Spindle

Section 4: Assembly and Operations

General Safety Notice

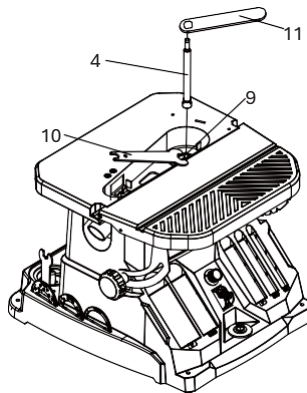
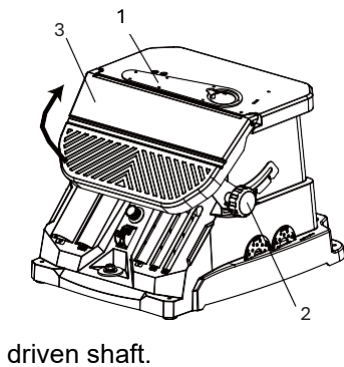
Do not connect the tool to the power source or operate it until it is fully assembled in accordance with the instructions. Failure to follow these safety precautions may result in serious personal injury.

Assembly and Adjustments

Sanding Belt Assembly

Installation of Driven Shaft and Connector

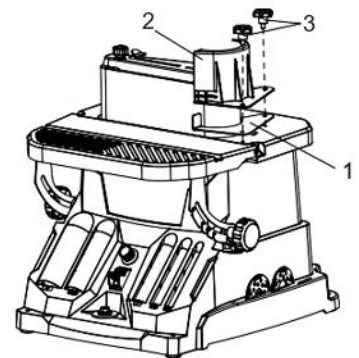
1. Disconnect the machine from the power source.
2. Remove the belt workbench cover plate (1). Loosen the table locking handles (2) on both sides of the machine. Lift the movable worktable (3) to the desired height and lock the table locking handles (2) in position.
Note: The movable worktable is adjustable from 0° to 45°.
3. Insert the driven shaft (4) into the main shaft (9).
4. Secure the main shaft (9) in position using the wrench (10).
5. Rotate the driven shaft (4) clockwise and screw it onto the main shaft (9) using the spindle spanner (11).
6. Slide the lower spindle washer (5) over the



Installation of Abrasive Belt Assembly

1. Position the sanding belt assembly (6) onto the drive shaft.

Ensure that the assembly grooves align with the

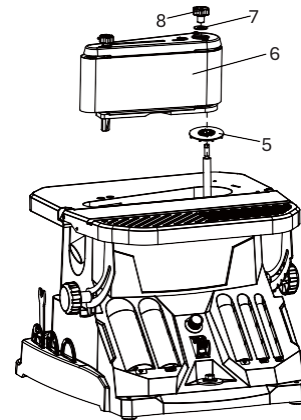


corresponding grooves on the machine.

2. Secure the sanding belt assembly in place using the abrasive belt locking handle (8) and washer (7).

Installation of Belt Dust Cover and Limit Plate

1. Insert the locking handle (3) sequentially through the belt dust cover (2) and the limit plate (1).

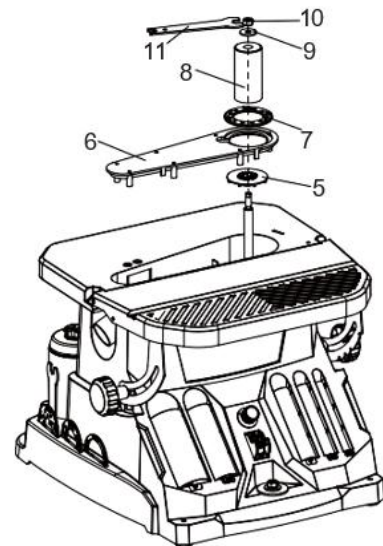
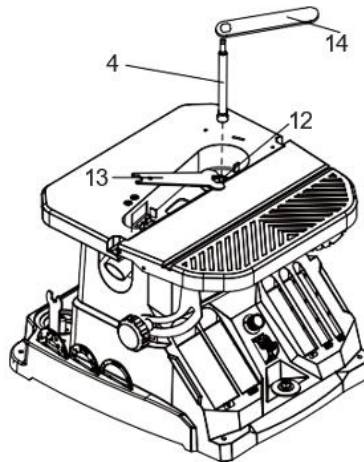
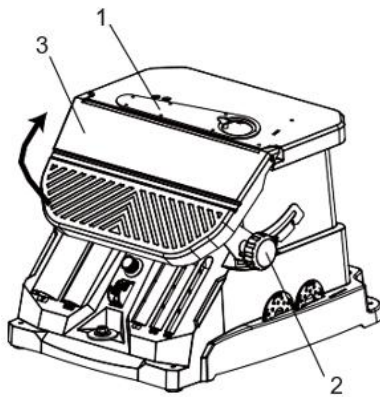


2. Lock and secure the assembly to the table, ensuring all components are firmly fastened.

Sanding Drum Assembly

Installation of Driven Shaft and Connector

1. Disconnect the machine from the power source.
2. Remove the belt workbench cover plate (1). Loosen the table locking handles (2) on both sides of the machine. Lift the movable worktable (3) to the desired level and lock the table locking handles (2) in place. **Note:** The movable worktable is adjustable from 0° to 45°.
3. Insert the driven shaft (4) into Main Shaft I (12).
4. Secure Main Shaft I (12) in position using the wrench (13).
5. Rotate the driven shaft (4) clockwise and screw it onto Main Shaft I (12) using the spindle spanner (14).
6. Slide the lower spindle washer (5) over the driven shaft.



Installation of Sanding Cylinder Assembly

1. Verify Components

Refer to the packing list diagram (page 9) to confirm that the correct sizes of throat plates, sanding drums, and washers are selected for each sanding sleeve. To ensure proper workpiece support and minimize clearance, always use the throat plate that corresponds to the drum and sleeve being used. The throat plate size is marked on its surface.

Note: The smallest sanding sleeve (1/2 in.) does not require a drum and is installed directly onto the bare spindle.

2. Install Belt Workbench Cover Plate

Attach the belt workbench cover plate (6) to the machine, ensuring it properly engages with the machine groove.

3. Install Sanding Drum and Sleeve

Mount the sanding drum (8) onto the spindle

shaft, followed by the corresponding sanding sleeve and throat plate (7). Ensure the printed side of the throat plate is facing upward.

Note: 1/2 in. sanding sleeves are mounted directly onto the spindle shaft without a drum.

4. **Secure the Assembly**

Place the appropriately sized flat washer D8 (9) over the sanding attachment. Tighten the top hex nut M8 (10) using a wrench (11) until the sanding drum fully expands and firmly grips the sanding sleeve. The sleeve should not rotate independently; it must rotate in conjunction with the sanding drum.

Dust Port and Dust Collection

Sanding operations generate dust and airborne particles that may be hazardous to health. Always wear an appropriate dust mask and operate the machine with a suitable dust collection system.

Connecting a Dust Collection System:

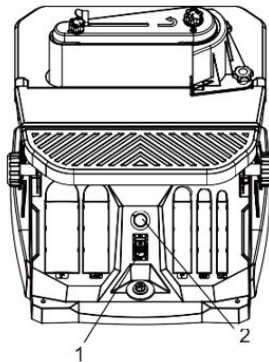
1. Fit a 1.5-inch dust hose (not included) over the dust port (1). Secure the hose with a hose clamp if necessary (not included).
2. Ensure the hose is firmly attached by gently tugging it. A secure connection is required for optimal dust collection performance.
3. Connect the opposite end of the dust hose to your dust collection system. Depending on the inlet size of the dust extractor, a dust port adapter (not included) may be required.
Dust port dimensions: outer diameter 1.5 in., inner diameter 1.4 in.

Note: Use of a dust collection system is mandatory. Failure to use one will void the warranty.

On/Off Switch with Safety Key

The keyed ON/OFF switch (1) is designed to prevent unauthorized operation of the sander.

1. **To Turn ON:** Insert the safety key into the key slot at the center of the switch, then lift the switch to the ON position.
2. **To Turn OFF:** Push the switch down to the OFF position. Once the sander has come to a complete stop, remove the safety key by gently pulling it out.



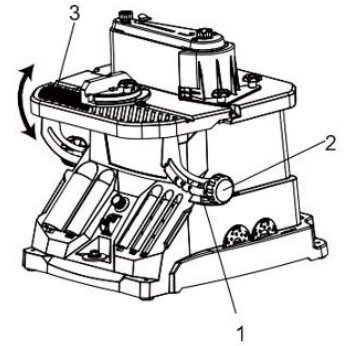
Warning: Always remove the safety key when the sander is not in use. Store the key in a secure location, out of the reach of children.

Speed Control Knob

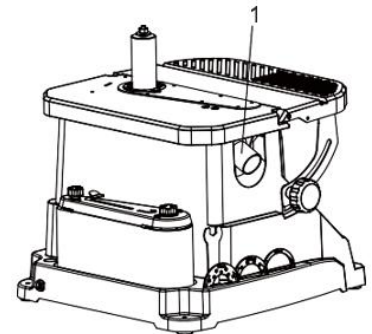
Adjust the sanding speed by rotating the speed control knob (2) clockwise or counterclockwise to achieve the desired RPM.

Adjusting Sanding Belt Table Angle

1. **Upward Adjustment**
Loosen the table locking handles (2) on both sides of the machine. Raise the movable worktable (3) to the desired angle, then securely tighten the table locking handles (2).

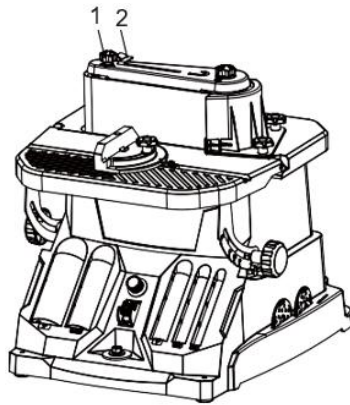


2. **Downward Adjustment**
Loosen the table locking handles (2) on both sides of the machine. Support the worktable with one hand and depress the spring plate (1) with the other hand until the desired angle is reached. Release the spring plate (1), then securely tighten the table locking handles (2).



Adjusting the Tracking of the Sanding Belt

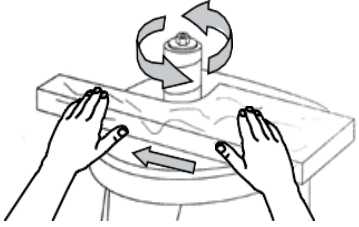
1. Install the belt sanding attachment and remove all tools from the sander.
2. Connect the sander to the power source and briefly turn it ON, then immediately turn it OFF. Observe whether the sanding belt runs centered on the drums without drifting toward the top or bottom edges of the belt sanding attachment.
3. If the belt drifts toward the top edge, rotate the belt adjustment handle (1) counterclockwise one-quarter turn.
4. If the belt drifts toward the bottom edge, rotate the belt adjustment handle (1) clockwise one-quarter turn.
5. Turn the machine ON briefly and then OFF to verify belt alignment. The belt should now run centered on the drums. If necessary, repeat steps 3 or 4 until proper tracking is achieved.



Changing Sanding Belts

1. Disconnect the machine from the power source.
2. Slide the belt tension handle (2) to the right to release tension on the sanding belt.
3. Remove the existing sanding belt and install a new belt of the desired grit.
4. Re-engage the belt tension handle to tighten the sanding belt securely before resuming operation.

Operating the Spindle Sander

1. Ensure the machine is securely mounted and all accessories are installed correctly as described in the instructions (pages 11–12).A line drawing showing a person's hands operating a spindle sander. The machine is mounted on a table. A cylindrical workpiece is being fed against the rotating spindle. Arrows indicate the spindle's rotation and the direction of the workpiece feed. The person's hands are positioned to hold the workpiece firmly against the table and the spindle.
2. Connect the sander to the power source and turn it ON. Allow the spindle to reach full operating speed.
3. Hold the workpiece firmly with both hands for maximum control. Slowly feed the workpiece against the rotation of the spindle. **Note:** The spindle rotates counterclockwise. Feed the workpiece from right to left. Feeding in the opposite direction may cause the workpiece to be thrown or bounce, creating a risk of injury.
4. Apply gentle downward pressure to keep the workpiece against the table. Guide it gradually along the sanding sleeve until the desired shape is achieved. Do not force the workpiece against the spindle.
5. After completing the operation, turn the sander OFF and wait for the spindle to come to a complete stop.
6. Remove the safety key and disconnect the machine from the power source. Refer to the maintenance instructions on the following page for proper cleaning and upkeep of the sander.

Operating a Belt Sander Belt Sanding Outside Curves

1. Turn the sander ON and allow it to reach full operating speed before applying the workpiece.
2. Hold the workpiece firmly with both hands and feed it slowly against the sanding belt. Apply gentle downward pressure to keep the workpiece against the table, gradually working along the belt until the desired curve is achieved.

3. Once sanding is complete, turn the sander OFF.

Belt Sanding Inside Curves

For sanding inside curves, use the rounded surface of the large or small sanding drum. Removal of the work-stop may be required. **Always unplug the sander before adjusting.**

1. Set the table tilt to 0° and remove the work-stop.
2. Connect the sander to the power source and allow it to reach full speed before introducing the workpiece.
3. Using both hands, feed the workpiece slowly against the drum wheel portion of the sanding belt. Apply gentle downward pressure to maintain contact with the table and work along the sanding belt until the desired curve is formed.

Section 5: Maintenance and Troubleshooting

Safety Precautions for Maintenance

- Always turn OFF and unplug the tool from the power source before performing any cleaning, adjustments, lubrication, or maintenance.
- Do not attempt to repair or replace electrical components yourself. Servicing must be performed by a qualified technician using only identical replacement parts. Use of non-approved parts may result in hazard or product failure.

Routine Inspection

Before each use, inspect the tool for safe operation. Do not use the tool if any of the following conditions are present:

- Loose hardware or improper mounting
- Misalignment or binding of moving parts
- Damaged power cord or electrical wiring
- Cracked or broken components
- Any other condition that may compromise safety

Cleaning and Storage

1. After each use, remove dust and debris from the tool, motor housing, and work area using a vacuum. Keep ventilation openings clear to prevent motor overheating.
2. Wipe external surfaces with a soft cloth or brush. Avoid allowing water or moisture to enter the tool.
3. Periodically remove the throat plate and lower spindle washer to clear dust accumulation from the throat area.

Caution: Do not use solvents or cleaning products that may damage plastic parts. Avoid substances such as gasoline, carbon tetrachloride, chlorinated cleaners, or ammonia-based detergents.

4. Store the tool in a clean, dry location out of the reach of children. Keep sanding accessories away from extreme heat or dry conditions. Do not bend or fold sanding sleeves.

Lubrication

All ball bearings are sealed and permanently lubricated. No additional lubrication is required.

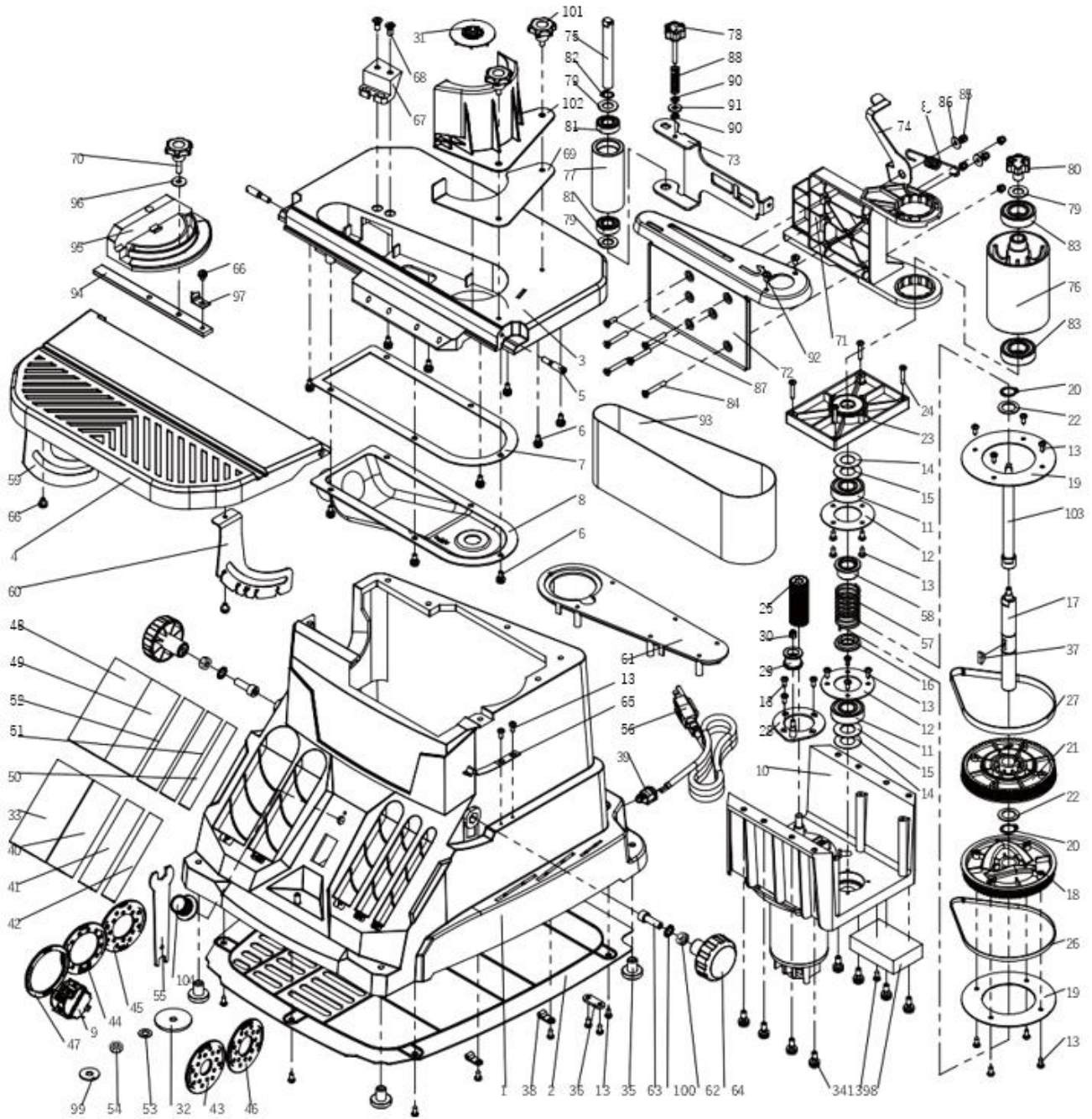
DO NOT dispose of this power tool with household waste. The tool contains electronic components that must be recycled. Take the product to a local recycling facility to ensure responsible disposal and minimize environmental impact.

Troubleshooting

PROBLEM	PROBLEM CAUSE	SUGGESTED CORRECTIVE ACTION
Sander does not turn on.	<ol style="list-style-type: none"> 1. Power cord or extension cord damaged or not properly plugged in. 2. Safety key is removed from power switch. 3. Defective power switch, defective motor or wiring, short circuit or loose connections. 4. Circuit breaker is tripped. 5. Worn carbon brushes. 	<ol style="list-style-type: none"> 1. Check the power cord, extension cord, power plug and the power outlet. Make sure the tool is properly plugged in. Do not use the if any cord is damaged. 2. Insert the safety key into the power switch. 3. Stop using the tool and contact customer service. Repairs must be done by a qualified technician. 4. Push circuit breaker to reset. 5. Replace carbon brushes.
Motor overheats.	<ol style="list-style-type: none"> 1. Motor overloaded. 2. Extension cord too long with an insufficient gauge. 3. Dust collection not being used. 	<ol style="list-style-type: none"> 1. Reduce load on motor - reduce pressure on the workpiece being sanded. 2. Utilize an extension cord of appropriate gauge and length or plug tool directly into outlet. 3. Use dust collection.
Sanding grains easily rub off.	<ol style="list-style-type: none"> 1. Sanding sleeve has been stored in an incorrect environment. 2. Sanding sleeve has been damaged or folded. 	<ol style="list-style-type: none"> 1. Store sanding accessories away from extremely hot/dry temperatures. 2. Store sanding accessories flat not bent or folded.
Deep sanding grooves or scars in workpiece.	<ol style="list-style-type: none"> 1. Sanding sleeve grit is too coarse for the desired finish. 2. Workpiece sanded across the grain. 3. Too much sanding force. 4. Workpiece held still against sanding surface for too long. 	<ol style="list-style-type: none"> 1. Use a finer-grit sanding accessory. 2. Sand with the grain of the wood. 3. Reduce pressure on workpiece while sanding. 4. Keep workpiece moving while sanding it on the sanding sleeve.

Section 6: Diagram and Parts List

Diagram:



Parts List:

Item #	Parts Number	Des.	Qty.
1	PBBSDOSVS01	Base	1
2	PBBSDOSVS02	Bottom Plate	1
3	PBBSDOSVS03	Fixed Worktable	1
4	PBBSDOSVS04	Movable Worktable	1
5	PBBSDOSVS05	Pin Shaft	2
6	PBBSDOSVS06	Phillips Screw, Spring Washer, and Flat Washer M5×12MM	12
7	PBBSDOSVS07	Rubber Ring	1
8	PBBSDOSVS08	Dust Collection Port	1
9	PBBSDOSVS09	Power Switch - HY7	1
10	BBSDOSVSMOT	DC Motor	1
11	PBBSDOSVS11	Ball Bearing 6203-2RZ	2
12	PBBSDOSVS12	Pressure Plate	2
13	PBBSDOSVS13	Phillips Self-Tapping Screw ST4.2×12	32
14	PBBSDOSVS14	Rubber Pad	2
15	PBBSDOSVS15	Felt Pad	2
16	PBBSDOSVS16	Bushing II	1
17	PBBSDOSVS17	Main Shaft I	1
18	PBBSDOSVS18	69 Tooth Timing Belt Pulley	1
19	PBBSDOSVS19	Pulley Pressure Plate	2
20	PBBSDOSVS20	Shaft Elastic Retaining Ring D17	2
21	PBBSDOSVS21	70 Tooth Timing Belt Pulley	1
22	PBBSDOSVS22	Spring Washer Plate	2
23	PBBSDOSVS23	Support Plate	1
24	PBBSDOSVS24	Phillips Self-Tapping Screw ST4.2×25	4
25	PBBSDOSVS25	Motor Pulley	1
26	PBBSDOSVS26	6mm Timing Belt	1
27	PBBSDOSVS27	10mm Timing Belt	1
28	PBBSDOSVS28	Tensioner Assembly	1
29	PBBSDOSVS29	Tension Wheel Assembly	1
30	PBBSDOSVS30	Hex Lock Nut M5	1
31	PBBSDOSVS31	Connector	1
32	PBBSDOSVS32	Sanding Drum Pressure Washer	1
33	PBBSDOSVS33	Sanding Drum Roller (2 inches 51mm)	1
34	PBBSDOSVS34	Phillips Screw, Spring Washer, and Flat Washer Assembly M6×16	8
35	PBBSDOSVS35	Insert-Type Foot Pad	4
36	PBBSDOSVS36	Pull-Out Pad	1
37	PBBSDOSVS37	Half-Round Key	1

Item #	Parts Number	Des.	Qty.
38	PBBSDOSVS38	Wire Fixed Button	2
39	PBBSDOSVS39	Wire Clip 6P4	1
40	PBBSDOSVS40	Sanding Drum Roller (1.5 inches 38mm)	1
41	PBBSDOSVS41	Sanding Drum Roller (1", 25mm)	1
42	PBBSDOSVS42	Sanding Drum Roller (3/4", 19mm)	1
43	PBBSDOSVS43	13mm Workbench Cover Plate	1
44	PBBSDOSVS44	38mm Workbench Cover Plate	1
45	PBBSDOSVS45	26mm Workbench Cover Plate	1
46	PBBSDOSVS46	19mm Workbench Cover Plate	1
47	PBBSDOSVS47	51mm Workbench Cover Plate	1
48	PBBSDOSVS48	Sanding Drum	1
49	PBBSDOSVS49	Sanding Drum	1
50	PBBSDOSVS50	Sanding Drum	1
51	PBBSDOSVS51	Sanding Drum	1
52	PBBSDOSVS52	Sanding Drum	1
53	PBBSDOSVS53	Flat Washer D8	1
54	PBBSDOSVS54	Hex Nut M8	1
55	PBBSDOSVS55	Wrench	1
56	PBBSDOSVS56	Power Cord	1
57	PBBSDOSVS57	Spring	1
58	PBBSDOSVS58	Bushing I	1
59	PBBSDOSVS59	Left Workbench Bracket	1
60	PBBSDOSVS60	Right Workbench Bracket	1
61	PBBSDOSVS61	Belt Workbench Cover Plate	1
62	PBBSDOSVS62	Hex Nut M8	2
63	PBBSDOSVS63	Hex Socket Head Cap Screw M8×25	2
64	PBBSDOSVS64	Table Locking Knob	2
65	PBBSDOSVS65	Spring Plate	1
66	PBBSDOSVS66	Phillips Screw, Spring Washer, and Flat	3
67	PBBSDOSVS67	Washer Assembly M5×8	1
68	PBBSDOSVS68	Fixed Slider	2
69	PBBSDOSVS69	Phillips Countersunk Head Screw M6×14	1
70	PBBSDOSVS70	Limit Plate	1
71	PBBSDOSVS71	Indexing Disk Handle	1
72	PBBSDOSVS72	Belt Holder	1
73	PBBSDOSVS73	Holder Cover Plate	1
74	PBBSDOSVS74	Guide Frame	1
75	PBBSDOSVS75	Belt Tension Handle	1
76	PBBSDOSVS76	Driven Shaft	1
77	PBBSDOSVS77	Drive Drum	1

Item #	Parts Number	Des.	Qty.
78	PBBSDOSVS78	Driven Drum	1
79	PBBSDOSVS79	Belt Adjustment Handle	3
80	PBBSDOSVS80	Washer	1
81	PBBSDOSVS81	Ball Bearing 6001-2RS	2
82	PBBSDOSVS82	Shaft Elastic Retaining Ring D12	1
83	PBBSDOSVS83	Ball Bearing 6004-2RS	2
84	PBBSDOSVS84	Phillips Countersunk Head Screw M5×35	5
85	PBBSDOSVS85	Hex Lock Nut M5	5
86	PBBSDOSVS86	Big Flat Washer D5	2
87	PBBSDOSVS87	Phillips Countersunk Head Screw M5×16	1
88	PBBSDOSVS88	Adjustment Spring	1
89	PBBSDOSVS89	Extension Spring	1
90	PBBSDOSVS90	Flat Washer D5	2
91	PBBSDOSVS91	Rubber Gasket	1
92	PBBSDOSVS92	Phillips Screw M5×8	2
93	PBBSDOSVS93	Sanding Belt	1
94	PBBSDOSVS94	Bevel Rod	1
95	PBBSDOSVS95	Worktable Indexing Disk	1
96	PBBSDOSVS96	Big Flat Washer D6	1
97	PBBSDOSVS97	Indexing Disk Pointer	1
98	PBBSDOSVS98	Circuit Board	1
99	PBBSDOSVS99	Big Flat Washer D8	1
100	PBBSDOSVS100	Tooth Lock Washer D8	2
101	PBBSDOSVS101	Locking Handle	2
102	PBBSDOSVS102	Belt Dust Cover	1
103	PBBSDOSVS103	Split Main Shaft	1
104	PBBSDOSVS104	Speed Control Knob	1



Busy Bee Tools

BUSY BEE TOOLS 2 YEARS LIMITED WARRANTY

Busy Bee Tools warrants every product to be free from defects in materials and agrees to correct such defects where applicable. This warranty covers **two years** for parts and 90 days for labor (unless specified otherwise), to the original purchaser from the date of purchase but does not apply to malfunctions arising directly or indirectly from misuse, abuse, improper installation or assembly, negligence, accidents, repairs or alterations or lack of maintenance.

Proof of purchase is necessary.

All warranty claims are subject to inspection of such products or part thereof and Busy Bee Tools reserves the right to inspect any returned item before a refund or replacement may be issued.

This warranty shall not apply to consumable products such as blades, bits, belts, cutters, chisels, punches etc. Busy Bee Tools shall in no event be liable for injuries, accidental or otherwise, death to persons or damage to property or for incidental contingent, special or consequential damages arising from the use of our products.

IF THE MACHINE IS ALTERED IN ANY WAY, THE WARRANTY SHALL BE NULL AND VOID.

WARRANTY, RETURNS, REPAIRS AND REPLACEMENTS

To return, repair, or replace a Busy Bee Tools product, you must visit the appropriate Busy Bee Tools showroom or call 1-800-461-BUSY.

For replacement parts directly from Busy Bee Tools, for this machine, please call 1-800-461-BUSY (2879), and have your model number and part number & payment option ready.

- All returned merchandise will be subject to a minimum charge of 15% for re-stocking and handling with the following qualifications.
- Returns must be pre-authorized by us in writing.
- We do not accept collect shipments.
- Items returned for warranty purposes must be insured and shipped pre-paid to the nearest warehouse
- Returns must be accompanied by a copy of your original invoice as proof of purchase. Returns must be in an unused condition and shipped in their original packaging a letter explaining your reason for the return. Incurred shipping and handling charges are not refundable.
- Busy Bee will repair or replace the item at our discretion and subject to our inspection.
- Repaired or replaced items will be returned to you pre-paid by our choice of carriers.
- Busy Bee reserves the right to refuse reimbursement or repairs or replacement if a third party without our prior authorization has carried out repairs to the item.
- Repairs made by Busy Bee Tools are warranted for 30 days on parts and labor.
- Any unforeseen repair charges will be reported to you for acceptance prior to making the repairs.
- The Busy Bee Parts & Service Departments are fully equipped to do repairs on all products purchased from us except for some products that require the return to their authorized repair depots. A Busy Bee representative will provide you with the necessary information to have this done.
- For faster service it is advisable to contact the nearest Busy Bee location for parts availability prior to bringing your product in for repair.