



# CX407N

## SUPER 3 SPEED AIR CLEANER

### User Manual



**COPYRIGHT © 2020 BY CRAFTEX INDUSTRIES INC.**

NO PORTION OF THIS MANUAL MAY BE PRODUCED WITHOUT THE WRITTEN CONSENT OF CRAFTEX INDUSTRIES INC.



# TABLE OF CONTENTS

General Safety Instructions for Machines.....	3
Specific Safety Instructions.....	4
CX407N Features.....	5
Un-Packing & Inventory.....	6
Proper Grounding.....	7
Mounting.....	8
Table Top Mount.....	8
Hanging Mounting.....	8
Flush Mount.....	9
Control Panel.....	10
Remote Controller.....	11
Filters.....	11
Changing / Servicing the Filters.....	12
Parts Breakdown.....	13
Parts List.....	14
Warranty.....	16

# GENERAL SAFETY INSTRUCTIONS FOR MACHINES

Extreme caution should be used when operating all power tools. Know your power tool, be familiar with its operation, read through the user manual and practice safe usage procedures at all times.

- ❖ **ALWAYS** read and understand the user manual before operating the machine.
- ❖ **CONNECT** your machine ONLY to the matched and specific power source.
- ❖ **ALWAYS** wear safety glasses respirators, hearing protection and safety shoes, when operating your machine.
- ❖ **DO NOT** wear loose clothing or jewelry when operating your machine. Wear protective hair covering.
- ❖ **A SAFE ENVIRONMENT** is important. Keep the area free of dust, dirt and other debris in the immediate vicinity of your machine.
- ❖ **BE ALERT! DO NOT** use prescription or other drugs that may affect your ability or judgment to safely use your machine.
- ❖ **DISCONNECT** the power source when changing drill bits, hollow chisels, router bits, shaper heads, blades, knives or making other adjustments or repairs.
- ❖ **NEVER** leave a tool unattended while it is in operation.
- ❖ **NEVER** allow unsupervised or untrained personnel to operate the machine
- ❖ **NEVER** reach over the table when the tool is in operation.
- ❖ **ALWAYS** keep blades, knives and bits sharpened and properly aligned.
- ❖ **ALL OPERATIONS MUST BE** performed with the guards in place to ensure safety.
- ❖ **ALWAYS** use push sticks and feather boards to safely feed your work through the machine.
- ❖ **ALWAYS** make sure that any tools used for adjustments are removed before operating the machine.
- ❖ **ALWAYS** keep bystanders safely away while the machine is in operation.
- ❖ **NEVER** attempt to remove jammed cutoff pieces until the blade has come to a full stop.

# CX407N – SUPER 3 SPEED AIR CLEANER

## SPECIFIC SAFETY INSTRUCTIONS

- ❖ **ALWAYS** read and understand the user manual before operating the air cleaner.
- ❖ **CX407N IS ONLY** designed to remove very fine wood particles from the air. Do not use it as a dust collector.
- ❖ **ALWAYS** secure any aprons, clothing, and long hair away from the intake side of the air cleaner unit and any moving parts.
- ❖ **ALWAYS** research the dangers of the specific species of wood you are working with, as dust from some woods is toxic and can make you sick and lead to long-term respiratory problems.
- ❖ **KEEP** your fingers and tools away from the fan output screen during fan operation.
- ❖ **ALWAYS** keep the filters serviced and never attempt to replace filters while the air cleaner is operating.
- ❖ **ONLY** operate this air cleaner in a dry environment.
- ❖ **DO NOT** operate this air cleaner in an environment that has volatile fumes from fuels, paints, pesticides, smoke, etc.
- ❖ **NEVER** operate the air cleaner in an environment that has particles of silica, metal, asbestos, or hazardous bacteria.
- ❖ **MAKE SURE** before making any adjustments, servicing, or installing parts, the switch is in the “OFF” position and the cord is un-plugged from the power source.
- ❖ **DO NOT** place your hands or tools near the open inlet during operation for any reason.
- ❖ **ALWAYS** make sure that the air cleaner is in a stable position, either it is hung from the ceiling or placed on the table.
- ❖ **MAKE SURE** you have read and understood all the safety instructions in the manual, and you are familiar with your air cleaner, before operating it. If you fail to do so, serious injury could occur.

### **WARNING!**

***The safety instructions given above can not be complete because the environment in every shop is different. Always consider safety first as it applies to your individual working conditions.***



## CX407N - AIR CLEANER FEATURES

### MODEL CX407N - SUPER 3 SPEED AIR CLEANER

As part of the growing line of Crafttex woodworking equipment, we are proud to offer the CX407N, a Super 3 Speed Air Cleaner. By following the instructions and procedures laid out in this user manual, you will receive years of excellent service and satisfaction. The CX407N is a professional tool and like all power tools, proper care and safety procedures should be adhered to.

- ⊞ Motor ..... 1/3-HP, 120-Volts, Single Phase, 60-Hz
- ⊞ Motor Low Speed ..... 770 RPM
- ⊞ Motor Medium speed..... 980 RPM
- ⊞ Motor High Speed..... 1100 RPM
- ⊞ Fan Low Speed Sound Rating..... 62 dB
- ⊞ Fan Medium Speed Sound Rating.. 65 dB
- ⊞ Fan High Speed Sound Rating ..... 69 dB
- ⊞ Air Flow at Low Speed..... 720 CFM
- ⊞ Air Flow at Medium Speed... 1115 CFM
- ⊞ Air Flow at High Speed..... 1290 CFM
- ⊞ Primary Filter ..... 5-Micron
- ⊞ Secondary Filter ..... 1-Micron
- ⊞ Unit Dimensions ..... Length 30-1/4" x Width 24-1/8" x Height 12-1/8"
- ⊞ Weight ..... 56 lbs
- ⊞ Warranty ..... 3 Years

# UNPACKING

The machine is properly packaged and shipped completely in a box for safe transportation. When unpacking, carefully inspect the box and ensure that nothing has been damaged during transit. Open the box and check that the machine and the parts are in good condition.

**WARNING!**

*CX407N is a heavy machine, do not over-exert yourself.*

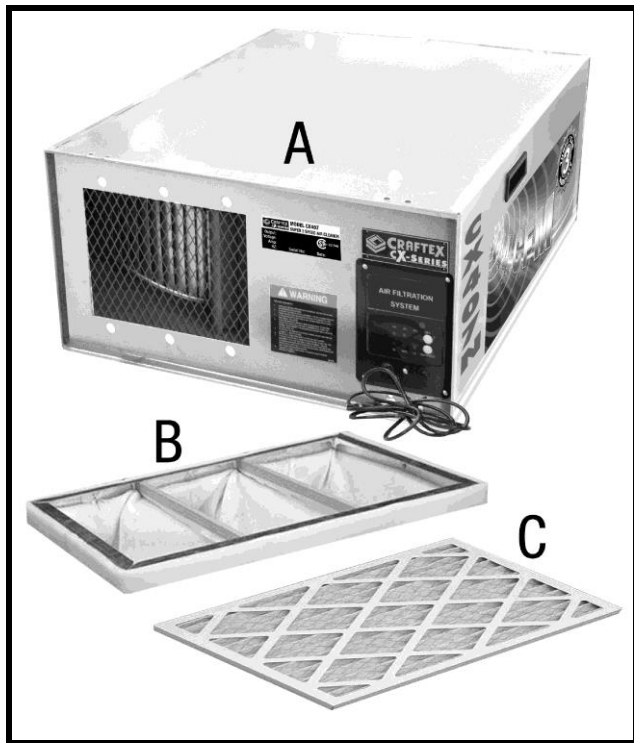


Figure-1 Inventory

LIST OF CONTENTS	QTY
A. Air Cleaner .....	1
B. Primary Filter (5-Micron).....	1
C. Secondary Filter (1-Micron).....	1

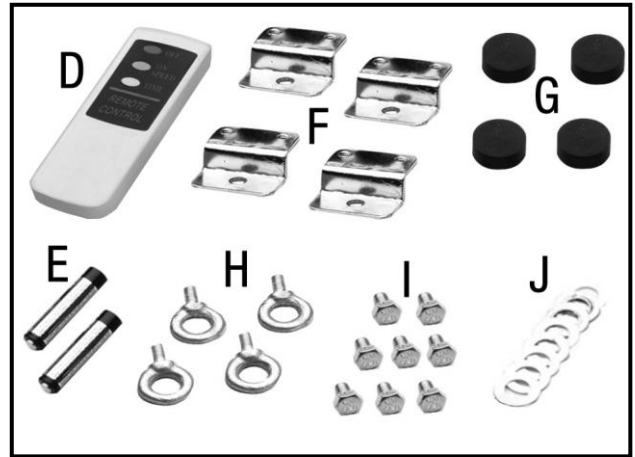


Figure-2 Inventory

LIST OF CONTENTS	QTY
D. Remote Control.....	1
E. AAA Battery .....	2
F. Flange Bracket.....	4
G. Rubber Feet.....	4
H. Eye Bolts (M10 - 1.5).....	4
I. Hex Bolts (M6-1.0 x 8) .....	8
J. Flat Washers (6 mm) .....	8

**NOTE:** While doing inventory, if you cannot find any part, check if the part is already installed on the machine.

Some of the parts come preassembled with the machine because of shipping purposes.

**Attention**

**Please remove all packing material from inside the air cleaner. Failure to do so will result in permanent damage to the machine.**

## PROPER GROUNDING

Grounding provides a path of least resistance for electric current to reduce the risk of electric shock.

Make sure the cord is plugged into a properly installed and grounded power outlet. To prevent electrical hazards, have a qualified electrician to ensure that the line is properly wired.

Make sure that the air cleaner is connected to an outlet having the same configuration as the plug. If an adaptor plug is used, it must be attached to the metal screw of the receptacle.

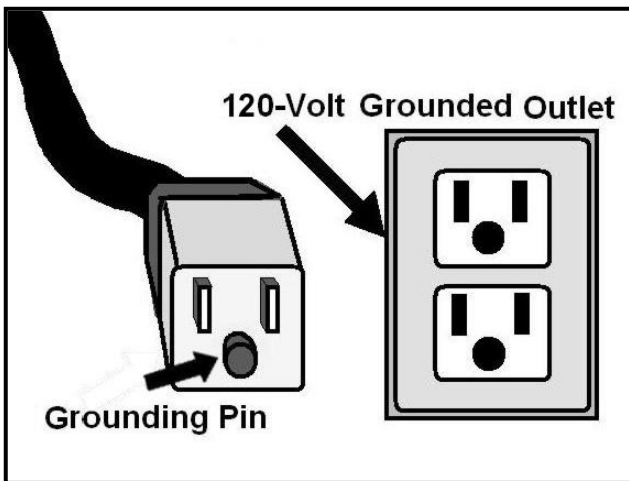


Figure-3 120-Volts Outlet for CX407N

It is strongly recommended not to use extension cords with your CX407N. Always try to position your machine close to the power source so that you do not need to use extension cords.

If you really find it necessary to use an extension cord, make sure the extension cord does not exceed 50-feet in length and the cord is 14-gauge to prevent motor damage.

### **WARNING!**

*Improper connection of the equipment-grounding conductor can result in a risk of electric shock. Check with a qualified electrician if you are in doubt as to whether the outlet is properly grounded.*

## MOUNTING

The CX407N can be mounted in three ways:

**TABLETOP MOUNT:** Using rubber feet and/or the flush mount flange brackets for a table-top application.

**HANGING MOUNT:** Using eye bolts for a high ceiling application.

**FLUSH MOUNT:** Using flange brackets for a wall or low ceiling application.

### **WARNING!**

*Make sure the air cleaner is OFF and the cord is disconnected from the power source while installing, removing, servicing, and performing any maintenance job.*

## TABLETOP MOUNT

The CX407N can be used as a portable air filtration system by installing the rubber feet and placing the unit on a workbench or a table.

To set up the air cleaner for tabletop operation:

Get the help of an assistant and carefully place the air cleaner unit upside down.

The rubber feet feature sticky backing. Attach the rubber feet to the bottom of the air cleaner as shown in figure 4.

For permanent tabletop mounting, refer to the Flush Mount procedure on page-9 and install the unit on the tabletop with the flush mount flange brackets.

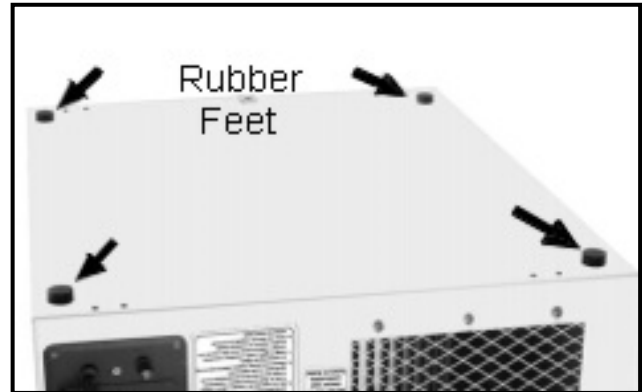


Figure-4 Rubber feet attached to the bottom of the air cleaner unit

## HANGING MOUNT

The CX407N can be hung from the ceiling, operating at an optimum height from the floor.

To install the CX407N, hung from the ceiling:

Install four chains, cable, or steel strapping lines to the ceiling from the support or joist capable of holding 105 lbs.

Remove the plug screws and retain these screws as you will need to reinstall them to seal back the air filter unit when eye bolts are removed.

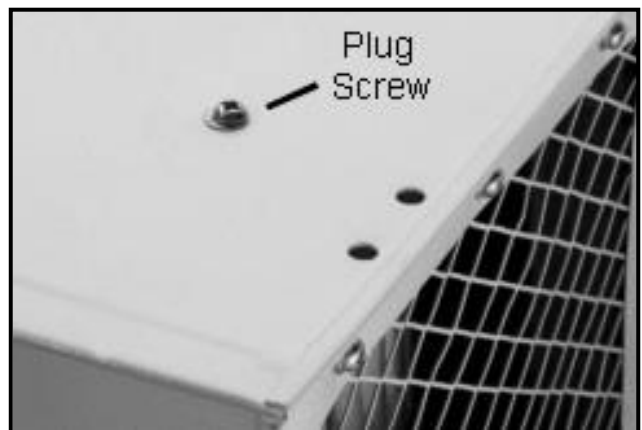


Figure-5 Removing the plug screws



Thread the eye bolts into the hole where plug screws were removed. See figure 6.

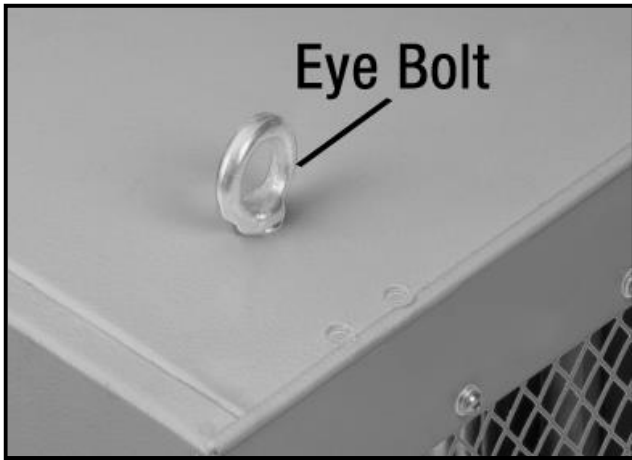


Figure-6 Installing the eye bolt

Tighten the eye bolts until they are snug against the air filter.

Get the help of an assistant or a friend and raise the air cleaner and secure the four hanging lines through the four eye bolts.

## **WARNING!**

*Do not fasten the air cleaner onto sheet rock or dry wall, drop ceiling tile or frame. Do not use a rope or power cord to hang the air cleaner. Do not locate the unit in a corner or near any heating or cooling vents. Do not use chain rated for a less minimum of 150 lbs working load for each support. Do not use fasteners that can tear out and make the air cleaner fall.*

*Failure to follow these instructions may result in serious damage (to the unit), injury or death.*

When the air cleaner is supported by wood structural member:

- ❖ The minimum recommended eye bolt size should be 5/16" -18" x 2" (not supplied)
- ❖ 1/4" pilot holes are recommended to help guide the eye bolts.
- ❖ Ensure the eye bolts penetrate at least 40mm into the wood structure.

When the air cleaner is supported by concrete structure:

- ❖ The minimum recommended expansion eye bolt size is 5/16" – 18" x 2".
- ❖ Drill 12mm pilot holes into the concrete structure and press the expansion eye bolt into hole and tighten the bolt until it is securely held to the ceiling.

## **FLUSH MOUNT**

When the shop is small, the CX407N air cleaner can be installed flush to the ceiling of the shop or to the tabletop using flange mounts.

Mount the air cleaner ONLY to load bearing supports, wall studs, steel chain or table that can hold 150 lbs of load.

To install the air cleaner:

Locate the supports in the wall or ceiling and mark the air cleaner unit bolt pattern on the wall or ceiling (17-1/4" from left to right and 31" from front to rear)

Drill the holes to accept at least 1/4" shank bolts for studs or use 1/4" nuts, bolts and washers for mounting.

Place the flange bracket under the air cleaner lip at the mounting hole location and secure it using screws and washers provided as shown in figure 7.

Install the other three flange brackets in the same manner.

For permanent tabletop mounting, use the lower lip holes.

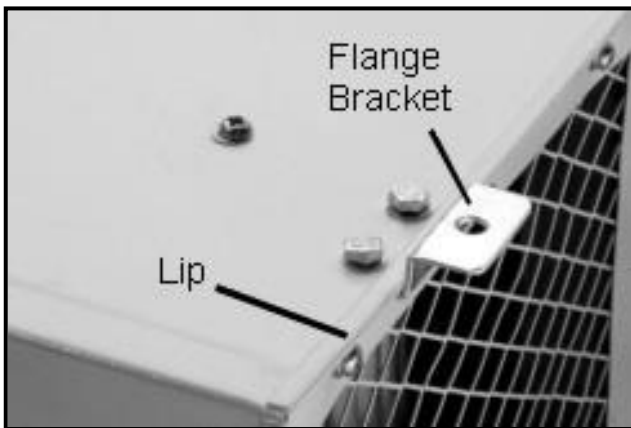


Figure-7 Mounting flange bracket to the air cleaner

Get the help of an assistant or a friend to lift the air cleaner and secure it to the wall or the ceiling using screws and washers (not provided).

### **WARNING!**

*Do not use support rated for a less minimum of 150 lbs working load. Do not use fasteners that can tear out and make the air cleaner fall down.*

*Failure to follow these instructions may result in serious damage (to the unit), injury or death.*

## **CONTROL PANEL**

The CX407N control panel allows you turn the air cleaner ON and OFF manually and set the fan speed.



Figure-8 Control panel

The control panel features two buttons: OFF and ON/SPEED.

**OFF Button:** Allows turning the air cleaner OFF manually.

**ON/SPEED Button:** Allows turning the air cleaner ON with one push of the button and for every additional push, the fan cycles from Low to Medium to High. The speed selection is indicated by a red LED light.

## REMOTE CONTROLLER

The CX407N is provided with a remote controller which enables the operator to operate the air cleaner remotely.

The remote control works within 75 feet range from the air cleaner unit and uses two AAA batteries. See figure-9.

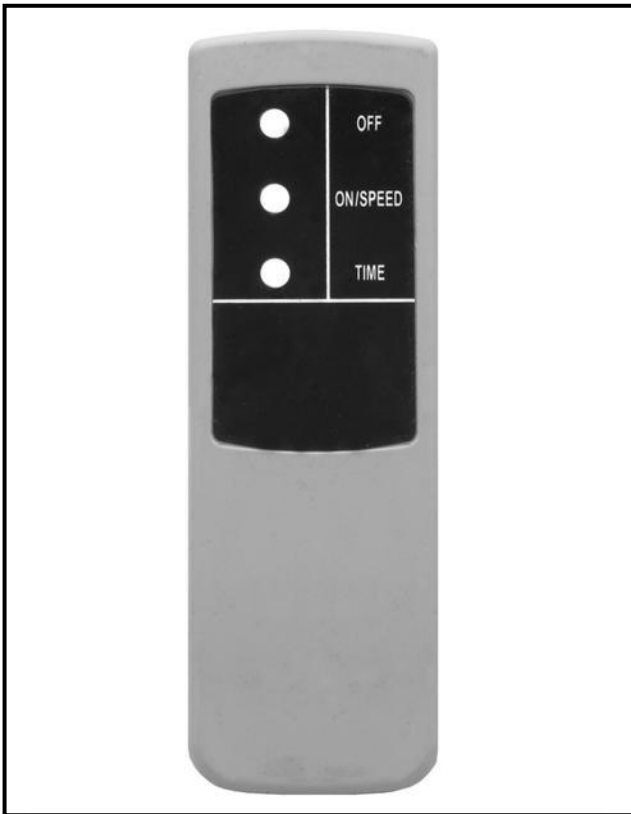


Figure-9 Remote controller for CX407N

The remote controller features:

**OFF Button:** Turns power to the air cleaner OFF.

**ON/SPEED Button:** Allows turning the air cleaner ON with one push of the button and for every additional push, the fan cycles from Low to Medium to High.

**TIME Button:** Allows setting the auto shut-off time for the air cleaner in 1 hour, 2 hours, and 4 hours.

## FILTERS

When to change the primary filter and when to service the secondary filter depends upon the usage of the air cleaner.

Checking the filters once a week for small shops is good while checking once a day is very important for heavy use and big shops.

### **WARNING!**

*Make sure to wear a dust mask and safety glasses when servicing and changing filters. The tiny dust particles can go into your lungs and cause serious long-term illness.*

### **WARNING!**

*Make sure the unit is OFF and the cord is disconnected from the power source when installing, removing, or servicing any part of the unit.*

## CHANGING / SERVICING THE FILTERS

Disconnect the unit from the power source.

Move the retainer latch upward and remove the primary filter as shown in figure-10.

Remove the secondary filter and wash it with warm water until it is clean. Let it dry. See figure 11.

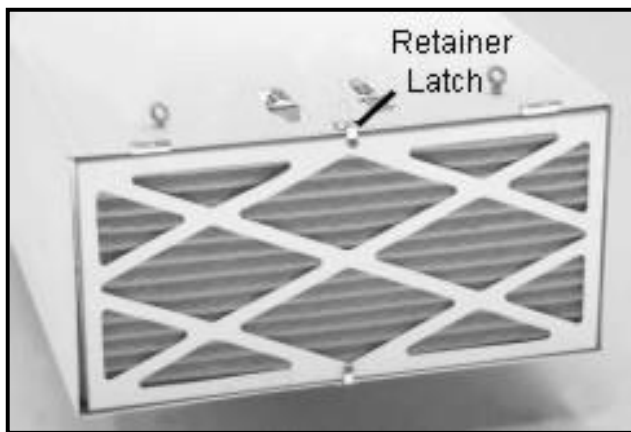


Figure-10 Removing the primary filter

Remember not to clean the secondary filter using compressed air. Doing so, will damage the filter and reduce the filtering quality.

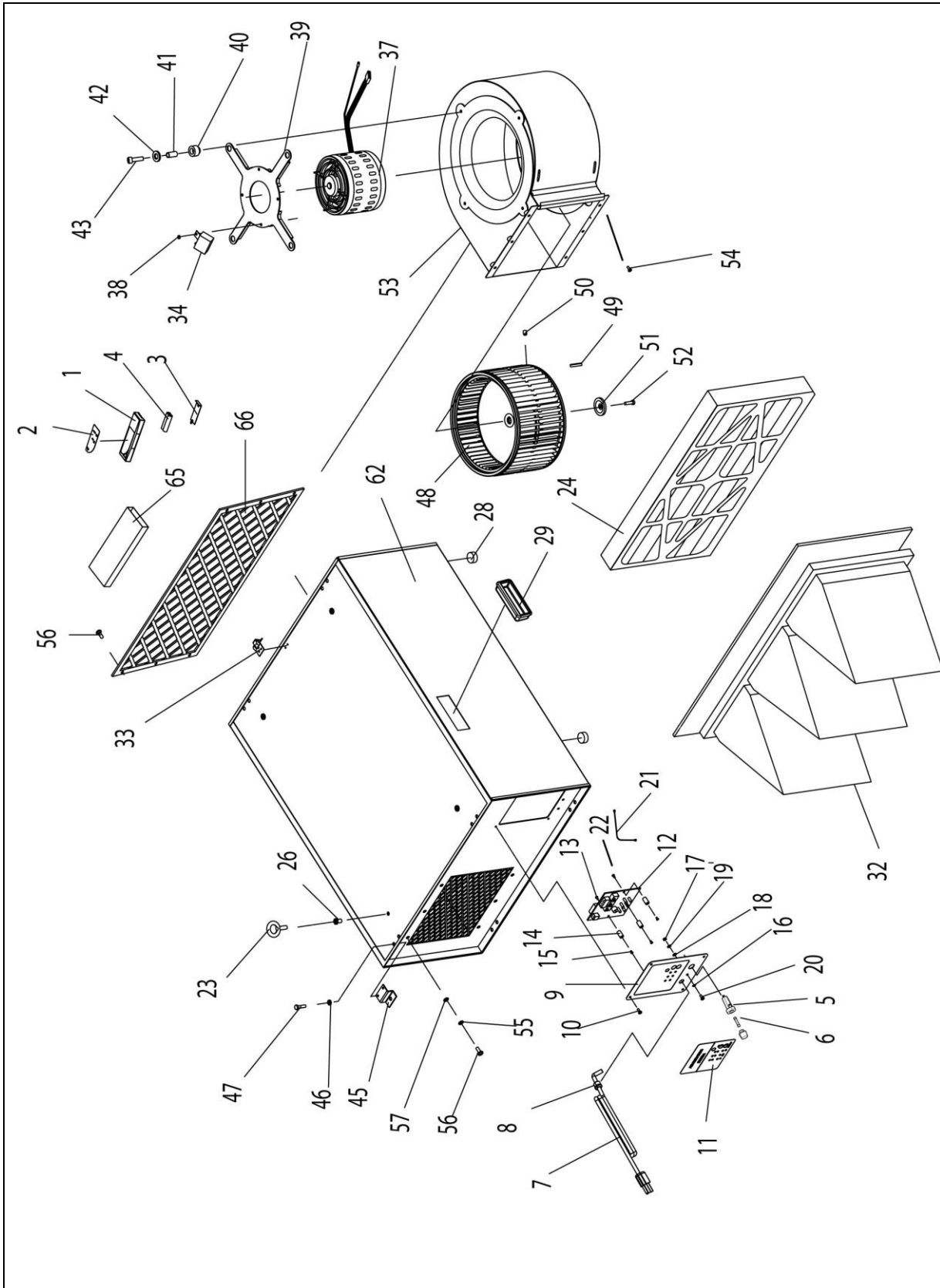


Figure-11 Secondary filter

Vaccum the dust inside the air cleaner and reinstall the secondary filter.

Install a new primary filter and push the retainer latch down to hold the filter.

# CX407N PARTS BREAKDOWN



# CX407N PARTS LIST

PART#	ITEM	DESCRIPTION
1	PCX407N01	REMOTE CONTROL
2	PCX407N02	LABEL (CONTROLS REMOTE)
3	PCX407N03	REMOTE CONTROL COVER
4	PCX407N04	BATTERY AAA
5	PCX407N05	CIRCUIT BREAKER 4 AMP (RESET)
6	PCX407N06	FUSE 4A
7	PCX407N07	POWER CORD 18 AWG
8	PCX407N08	STRAIN RELIEF
9	PCX407N09	CONTROL PANEL
10	PCX407N10	SCREW - PAN HEAD M4-0.7 X 10
11	PCX407N11	LABEL (CONTROLS)
12	PCX407N12	PC BOARD
13	PCX407N13	SCREW - PAN HEAD M3-0.45 X 6.5
14	PCX407N14	SPACER (SPECIAL)
15	PCX407N15	SCREW - PAN HEAD (SPECIAL)
16	PCX407N16	WASHER - EXT TOOTH M4
17	PCX407N17	NUT - HEX M4-0.75
18	PCX407N18	WASHER - FLAT M4
19	PCX407N19	WASHER - LOCK M4
20	PCX407N20	SCREW - PAN HEAD M4-0.75 X 6
21	PCX407N21	PC WIRING HARNESS
22	PCX407N22	BOLT - SPECIAL M3-0.45 X 6.5
23	PCX407N23	EYE BOLT M6-1.0 X 20
26	PCX407N26	RIVET NUT M6 X 8
28	PCX407N28	RUBBER FOOT
29	PCX407N29	HANDLE
32	PCX407N32	1 MICRON INNER FILTER
33	PCX407N33	CLIP SET
34	PCX407N34	CAPACITOR 6 MFD 450VAC
37	PCX407N37	MOTOR
38	PCX407N38	NUT - LOCK M5-0.8
39	PCX407N39	FLANGE
40	PCX407N40	SPACER
41	PCX407N41	SLEEVE
42	PCX407N42	WASHER - FLAT M6
43	PCX407N43	BOLT - HEX HD M6-1.0 X 30
45	PCX407N45	FLANGE BRACKET
46	PCX407N46	WASHER - FLAT M6
47	PCX407N47	BOLT - HEX HD M6-1.0 X 10
48	PCX407N48	FAN SQUIRREL CAGE
49	PCX407N49	KEY M4 X 4 X 20
50	PCX407N50	BOLT - HEX HD M8-1.25 X 12
51	PCX407N51	FLANGE DISK M6.5 X 44
52	PCX407N52	SCREW - CAP M6-1.0 X 20 LH
53	PCX407N53	FAN HOUSING

54	PCX407N54	SCREW - TAPPING
55	PCX407N55	WASHER - LOCK M6
56	PCX407N56	SCREW - PAN HD M6-1.0 X 16
57	PCX407N57	FLAT WASHER 6MM
62	PCX407N62	HOUSING (MAIN BODY)
65	PCX407N65	HARDWARE PACKAGE
66	PCX407N66	PROTECTIVE MESHING



## Craftex Machinery Warranty

Busy Bee Tools warrants every Craftex machine to be free from defects in materials and agrees to correct such defects where applicable. This warranty covers **two years** for Craftex machines and **three years** for Craftex CX-Series Machines and 90 days for labor (unless specified otherwise), to the original purchaser from the date of purchase but does not apply to malfunctions arising directly or indirectly from misuse, abuse, improper installation or assembly, negligence, accidents, repairs or alterations or lack of maintenance. *Proof of purchase is necessary.*

All warranty claims are subject to inspection of such products or part thereof and Busy Bee Tools reserves the right to inspect and all items before a refund or replacement may be issued. A Machinery Return Form must be filled out by the original purchaser requesting a return. Authorization may take up to 72 hours for inspection and approval.

This warranty shall not apply to consumable products such as blades, bits, belts, cutters, chisels, punches etc...

Busy Bee Tools shall in no event be liable for injuries, accidental or otherwise, death to persons or damage to property or for incidental contingent, special or consequential damages arising from the use of our products.

### RETURNS, REPAIRS AND REPLACEMENTS

To return, repair, or replace a Craftex Machine, a Machinery Return Form must be filled out by the original purchaser requesting a return. Visit the appropriate Busy Bee Tools showroom or call 1-800-461-BUSY. Craftex is a brand of equipment that is exclusive to Busy Bee Tools.

For replacement parts directly from Busy Bee Tools, for this machine, please call 1-800-461-BUSY (2879), and have your credit card and part number handy. You can find the part number in the back of your owner's manual under the parts list & exploded diagram.

- All returned merchandise will be subject to a minimum charge of 15% for re-stocking and handling.
- A Machinery Return Form must be filled out by the original purchaser requesting a return and it must be approved by Busy Bee Tools in writing before accepting a return.
- We do not accept *collect* shipments.
- Items returned for warranty purposes must be insured and shipped pre-paid to the nearest warehouse.
- Returns must be accompanied with a copy of your original invoice as proof of purchase. Incurred shipping and handling charges are not refundable.
- Busy Bee Tools will repair or replace the item at our discretion and subject to our inspection.
- Repaired or replaced items will be returned to you pre-paid by our choice of carriers.
- Busy Bee Tools reserves the right to refuse reimbursement or repairs or replacement if a third party without our prior authorization has carried out repairs to the item.
- Repairs made by Busy Bee Tools are warranted for 30 days on parts and labour.
- Any unforeseen repair charges will be reported to you for acceptance prior to making the repairs.
- Replacement motors purchased from Busy Bee Tools carry a 90 manufactures defect warranty.
- The Busy Bee Tools Parts & Service Departments are fully equipped to do repairs on all products purchased from us with the exception of some products that require the return to their authorized repair depots. A Busy Bee Tools representative will provide you with the necessary information to have this done.

