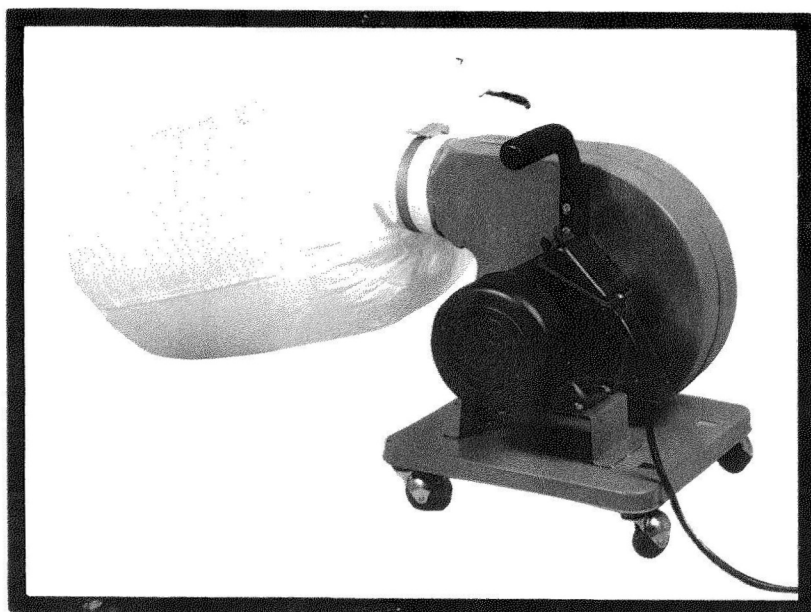


OWNER'S OPERATING MANUAL



MODEL NO: B2179

DUST COLLECTOR



CONTENTS

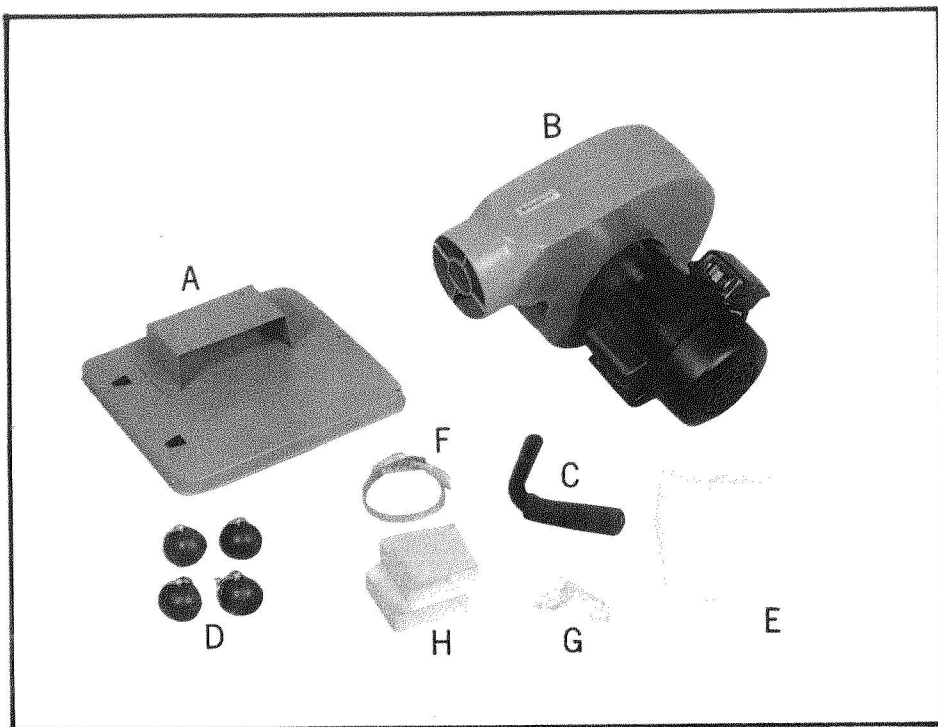
UNPACKING AND CHECKING CONTENTS.....	2
ASSEMBLY.....	3
SAFETY RULES.....	6
GROUNDING.....	8
PARTS DIAGRAM.....	9
PARTS LIST.....	10

READ THIS MANUAL CAREFULLY (ASSEMBLY, TESTING & OPERATING)

WARNING: DO NOT OPERATE THIS UNIT UNTIL THE PVC HOSE IS INSTALLED ONTO THE DUST
INLEY PORT.

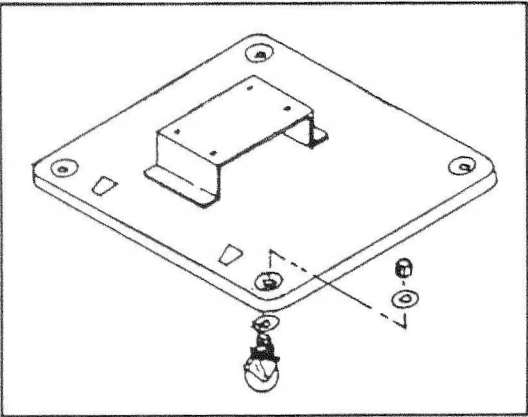
UNPACKING AND CHECKING CONTENTS

Unpack carton check machine to see parts listed below:



- A. BASE PLATE
- B. COLLECTOR BODY & FAN/MOTOR ASSEMBLY
- C. HANDLE BAR
- D. CASTER
- E. COLLECTOR BAG
- F. HOSE CLAMPS
- G. SCREWS, NUTS, WASHERS, AND WRENCH
- H. HANG

ASSEMBLY



TO ASSEMBLING, FIRST PLACE THE BASE PLATE UPSIDE DOWN AND INSTALL THE FOUR CASTERS BY LOCKING THE WASHER AND NUTS.

FIG. 1

INSTALL THE HANDLE BAR TO THE FIXED SUPPORT UPSIDE USING FOUR 1/4"×1/4" FLAT HEAD SCREWS, TIGHTEN WITH A SCREW DRIVER FIG. 2.

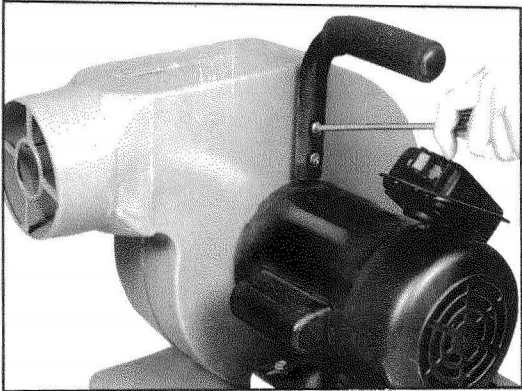


FIG. 2

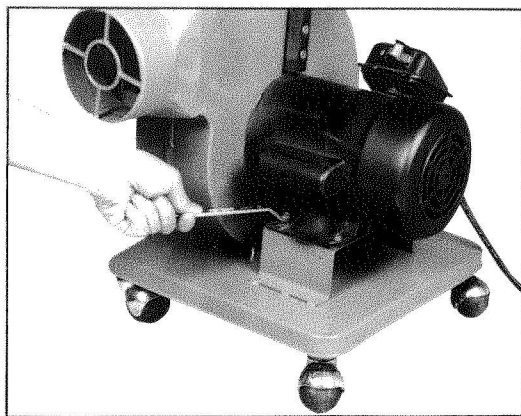


FIG. 3

WITH THE COLLECTOR BODY AND BASE PLATE ASSEMBLE USING FOUR $\frac{1}{4} \times \frac{1}{2}$ " HEX FLANGE HEAD SCREWS. TIGHTEN ALL FASTENERS SECURELY. FIG. 3.

NOW ATTACH THE FILTER AND COLLECTOR BAGS TO THE COLLECTOR BODY USING ONE HOSE CLAMPS. TIGHTEN WITH SCREW DRIVER FIG. 4.

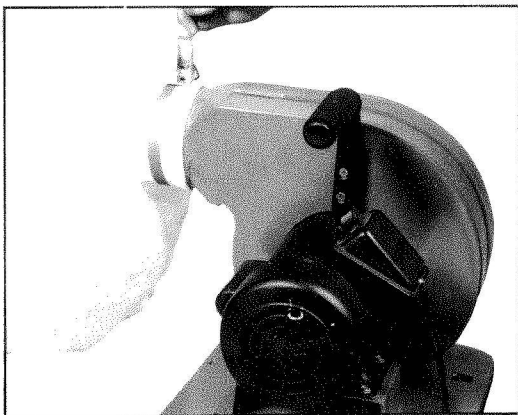
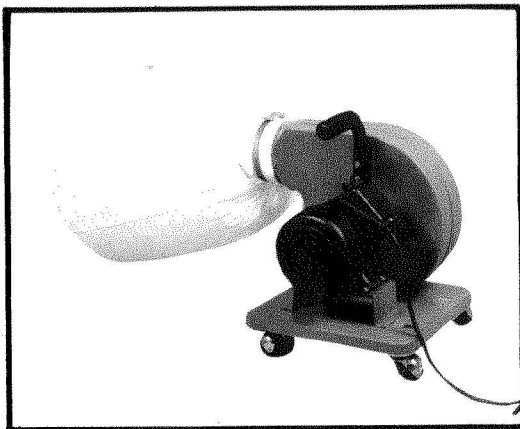


FIG. 4



THE DUST COLLECTOR IS NOW READY TO BE PLACED INTO SERVICE. BEFORE CONNECTING TO A POWER SOURCE, BE SURE THE POWER SOURCE IS PROPERLY GROUNDED AND IS OF PROPER VOLTAGE AND AMPERAGE.

OPTIONAL ACCESSORIES

PART NO.	DESCRIPTION
00-0101	9" ALUMINUM FAN
00-0102	12" ALUMINUM FAN
00-0201	BAG CLAMP FOR CT-80 A/C
00-0202	BAG CLAMP FOR CT-90 A/C
00-0203	BAG CLAMP FOR CT-99 HA/HC
00-0204	BAG CLAMP FOR CT-101/101H/201/201H
00-0205	BAG CLAMP FOR CT-202
00-0206	BAG CLAMP FOR CT-401
00-0301	FLEXIBLE HOSE, 2" IN DIA.
00-0302	FLEXIBLE HOSE, 4" IN DIA.
00-0303	FLEXIBLE HOSE, 5" IN DIA.
00-0304	FLEXIBLE HOSE, 6" IN DIA.
00-0401	REDUCER, 4" TO 2"
00-0501	HOSE CLAMP, 2" OR 6"
00-0601	TRANSPARENT COLLECTING BAG
00-0701	AIR FLOW CONTROL GATE, 4" IN DIA.
00-0801	TAPERED CONNECTOR, 4" IN DIA.
00-0901	2-HOLE MANIFOLD, 4" OUTLET/5" INLET
00-0902	3-HOLE MANIFOLD, 4" OUTLET/6" INLET
00-0903	4-HOLE MANIFOLD, 4" OUTLET/6" INLET
00-0904	5-HOLE MANIFOLD, 4" OUTLET/9" INLET

SAEETY PULES

IMPORTANT SAFETY INSTRUCTIONS

When using your Dust Collection System, follow basic safety precautions including the following.

WARNING: To reduce the risk of fire, electric shock, or injury:

- Read and understand this owner's manual and all labels on the Dust Collection System before operating. Use only as described in this manual. To avoid personal injury or damage to Dust Collection System, use only recommended accessories.

Sparks inside the electrical parts, can ignite flammable vapors or dust. To avoid fire or explosion:

- Do not vacuum, or use this Dust Collection System near flammable or combustible liquids, gases, gasoline or other fuels, lighter fluid, cleaners, oil-based paints, natural gas, hydrogen, or explosive dusts like coal dust, magnesium dust, grain dust, or gun powder.
- Do not vacuum anything that is burning or smoking, such as cigarettes, matches, or hot ashes.
- To avoid health hazards from vapors or dusts, do not vacuum toxic materials.
- Do not use or store near hazardous materials.
- Do not use outdoors or on wet surfaces.
- Put unit on a stable, level surface.
- Route vacuum hose and electric cord out of traffic areas.
- Do not allow to be used as a toy. Close attention is necessary when used by or near children.
- Do not leave appliance plugged in. Unplug from outlet when not in use and before servicing.

- To avoid injury from accidental starting, unplug power cord before changing or cleaning filter/dust bag or chip bag.

- Do not use without filter/dust bag and/or chip bag in place.

- Do not unplug by pulling on cord. To unplug, grasp the plug, not the cord.

- Turn off controls before unplugging.

- Do not use with damaged cord, plug or other parts. If your Dust Collection System is not working as it should, has missing parts, has been dropped, damaged, left outdoors, or dropped into water, return it to Service Center.

- Do not pull or carry by cord, use cord as handle, close a door on cord, or pull cord around sharp edges or corners. Do not run Dust Collection System over cord. Keep cord away from heated surfaces.

- Do not handle plug of the Dust Collection System with wet hands.

- Do not put any object into ventilation openings. Do not vacuum with any ventilation openings blocked; Keep free of dust, lint, hair or anything that may reduce air flow.

- Keep hair, loose clothing, fingers, and all parts of body away from openings and moving parts.

- Extension cords in poor condition or that are too small can pose fire and shock hazards. When using an extension cord, be sure it is in good condition. See "Extension Cords" in the "Operation" section for proper wire sizes.

- Connect to properly grounded outlet only (See "Grounding instructions" on page 14.)

SAVE THESE INSTRUCTIONS

SAFETY RULES

1. **READ AND BECOME FAMILIAR** with the entire operating manual.
2. **KEEP GUARDS AND COVER** in place and in working order.
3. **ALWAYS USE SAFETY GLASSES.** Also use face or dust mask if cutting operations is dusty. Everyday eye-glasses only have impact resistant lenses; they are not safety glasses.
4. **KEEP WORK AREA CLEAN.** Cluttered areas and benches invite accidents.
5. **DON'T FORCE TOOL.** It will do a better and safer job at the rate for which it was designed.
6. **AVOID ACCIDENTAL STARTING.** Make sure switch is in "OFF" position before plugging in cord.
7. **DISCONNECT TOOLS BEFORE SERVICING** and when changing accessories such as blades, bits, cutters.
8. **DON'T OVERREACH.** Keep your proper footing and balance at all times. For best footing wear rubber soled footwear. Keep floor clear of oil, scrap wood, etc.
9. **WEAR PROPER APPAREL.** Loose clothing or jewelry may get caught in moving parts. Wear protective hair covering to contain long hair.
10. **MAKE WORKSHOP KIDPROOF.** Place a padlock on the switch when blade saw is not in use and store the key in a safe location.
11. **REMOVE ADJUSTING KEYS AND WRENCHES.** Form habit of checking to see that keys and adjusting wrenches are removed from tool before turning it on.
12. **AVOID DANGEROUS ENVIRONMENT.** Don't use power tools in damp or wet locations. Keep your work area well illuminated. **DO NOT USE** in explosive atmosphere (around paint, flammable liquids, etc.)
13. **KEEP CHILDREN AWAY.** All visitors should be kept a safe distance from work area, especially while operating unit.
14. **USE THE PROPER TOOL.** Don't force tool or attachment to do a job for which it was not designed.
15. **MAINTAIN TOOLS IN TOP CONDITION.** Keep tools sharp and clean for best and safest performance. Follow instructions for lubricating and changing accessories.
16. **SECURE WORK.** Use clamps or a vise to hold work, when practical. It's safer than using your hand and prevents round or irregularly shaped pieces from turning.
17. **CHECK DAMAGED PARTS.** Before further use of the tool, a guard or other part that is damaged should be checked to assure that it will operate properly and perform its intended function—check for alignment of moving parts, breakage of parts, mounting, any other conditions that may affect its operations. A guard or other part that is damaged should be properly repaired or replaced.
18. **USE RECOMMENDED ACCESSORIES** — Consult Owner's Manual. Use of improper accessories could be hazardous.
19. **NEVER STAND ON TOOL.** Injury could occur from a fall.
20. **NEVER LEAVE TOOL RUNNING AND UNATTENDED.**
21. **ALWAYS REMOVE CORD PLUG** from electrical outlet when adjusting, changing parts or working on tool.

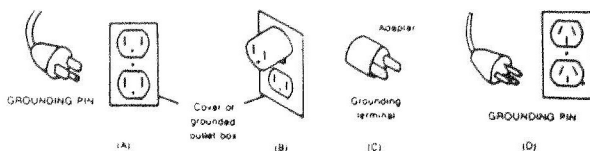
GROUNDING

1. In the event of a malfunction or breakdown, grounding provides a path of least resistance for electric current to reduce the risk of electric shock. This tool is equipped with an electric cord having an equipment-grounding conductor and a grounding plug. The plug must be plugged into a matching outlet that is properly installed and grounded in accordance with all local codes and ordinances.
2. Do not modify the plug provided it will not fit the outlet, have the proper outlet installed by a qualified electrician.
3. Improper connection of the equipment grounding conductor can result in a risk of electric shock. The conductor with insulation having an outer surface that is green with or without yellow stripe is the equipment-grounding conductor. If repair or replacement of the electric cord or plug is necessary, do not connect the equipment-grounding conductor to a live terminal.
4. Check with a qualified electrician or serviceman if the grounding instructions are not completely understood, or if in doubt as to whether the tool is properly grounded.
5. Use only 3-wire extension cords that have 3-prong grounding plugs and 3-pole receptacles that accept the tool's plug.
6. Repair or replace damaged or worn cord immediately.
7. This tool is intended for use on a circuit that has an outlet that looks like the one illustrated in sketch A. The tool has a grounding plug that looks like the plug illustrated in sketch A. A temporary adapter, which looks like the adapter illustrated in sketches B and C, may be used to connect his plug to a 1-pole receptacle as shown in sketch B if a properly grounded outlet is not available. The temporary adapter should be used only until a properly grounded outlet can be installed by a qualified electrician. The green-colored rigid ear, lug, ect. extending from the adapter must be connected to a permanent ground such as a properly grounded outlet box.

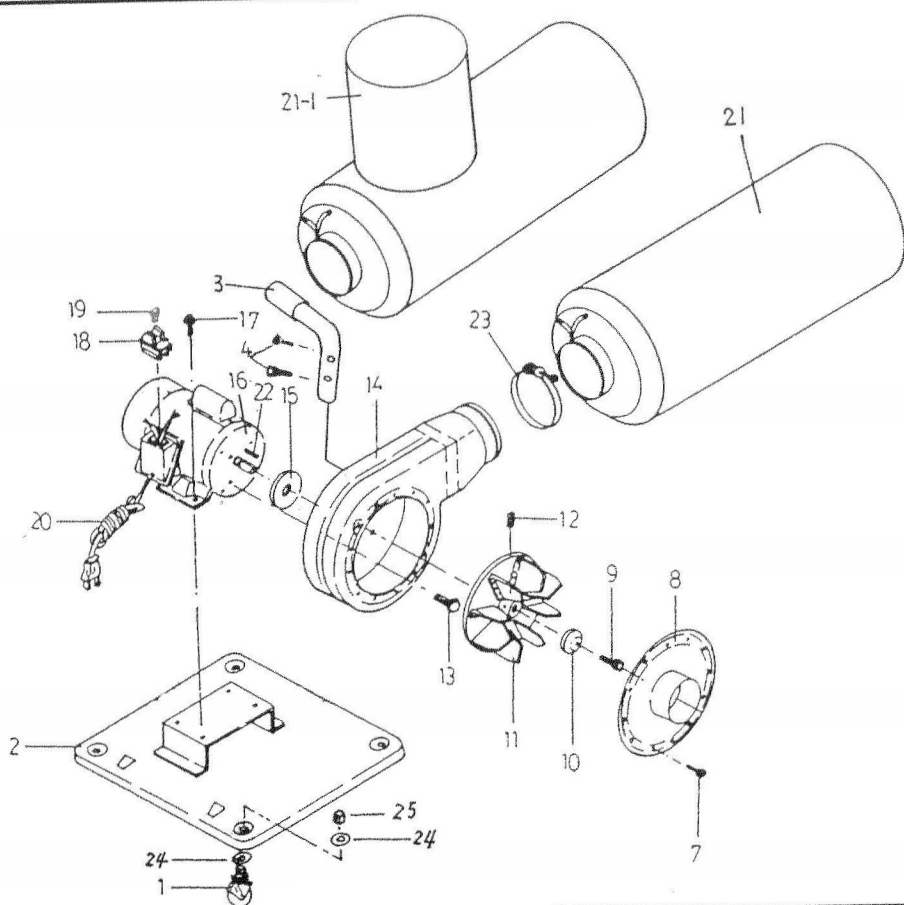
NOTE: The type of electrical plug and receptacle differs from country to country.

Caution: In Canada only the grounding shown in figure (A) is acceptable. The extension cords should be CSA certified S.J.T. type or something better.

Caution: In Australia only the grounding shown in figure (D) is acceptable. The extension cords should be SAA certified.

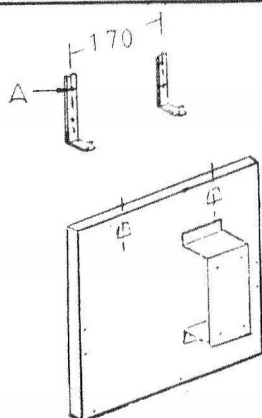


PARTS DIAGRAM



HANG WALL TYPE HANG
EVOKE BETWEEN CENTERS
170mm.

A HOLE THE BOTTOM
UNYIL CENTERS BETWEEN
1000mm.



PARTS LIST

PART NO.	DESCRIPTION	SIZE	QTY.
1	Caster		4
2	Base Plate		1
3	Handle Bar		1
4	Concave Head Cross Screw	1/4" × 1" L	2
7	Screw Pan Hd.	3/16" × 3/8" L	12
8	Inlet Cover	φ4"	1
9	Screw Hex. Soc. Hd.	M6 × 20L (L.H)	1
10	Washer		1
11	Turbo Fan	φ9"	1
12	Set Screw Soc. Hd.	5/16 × 5/16" L	1
13	Screw Hex. Flg. Hd.	1/4" × 1/2" L	4
14	Collector Body		1
15	Packing		1
16	Motor		1
17	Screw Hex. Soc. Hd.	1/4" × 1/2" L	4
18	Switch		1
19	Key Switch		1
20	Power Cord		1
21	Bag		1
21-1	Bag ※ Optional Accessories ※		1
22	Key		1
23	Hose clamp		1
5	Inlet	φ5" Optional Accessory	1
6	Screw Pan. Hd.	3/16" Optional Accessory	1
8-1	Inlet Cover	φ5" Optional Accessory	1
24	Washer		8
25	Nut	5/16"	4