

Busy Bee Tools

MODEL B3620 UNIVERSAL MOBILE WORKSHOP STAND USER MANUAL



TABLE OF CONTENTS

Instructions..... 3

Assembly Instructions..... 4

Mobile Workstation Parts List.....8

Diagram.....9

Warranty.....10

INTRODUCTION

The model B3620 Universal Mobile Workshop Stand has been designed to provide a sturdy work surface for mounting machinery and equipment.



SPECIFICATIONS

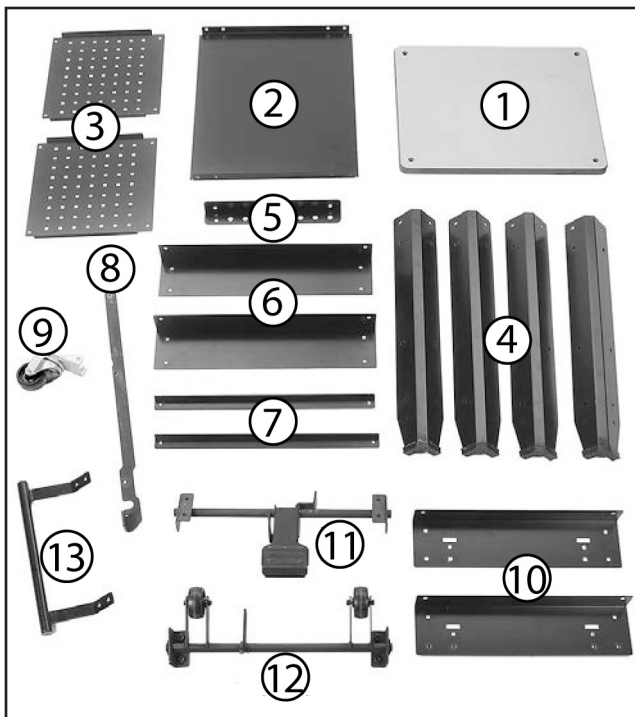
- Dimensions (Length x width x height) 20”L x 23”W x 30”H
- Maximum Weight Capacity 300lbs
- Estimated Assembly Time 25 to 30 minutes.

TOOLS REQUIRED FOR ASSEMBLY

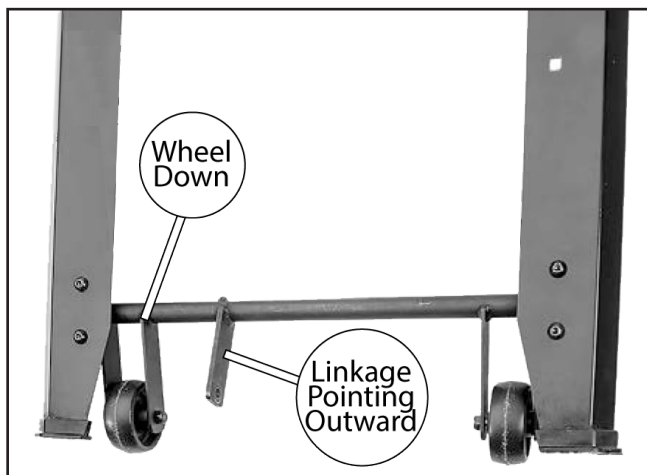
- Open-Ended Wrenches or sockets 13mm x 2
- Hex Wrench 5mm x 1

INVENTORY

Description	Qty
1. Table top.....	1
2. Shelf.....	1
3. Side Panels.....	2
4. Legs w/Foot Pads.....	4
5. Tool Holder.....	1
6. Upper Braces (Left & Right).....	2
7. Lower Braces.....	2
8. Linkage Bar/Pedal.....	1
9. Caster.....	1
10.Upper Braces (Front & Back).....	2
11.Pedal Assembly.....	1
12.Wheel Assembly.....	1
13.Handle.....	1
14.Hardware Bag (Not Pictured)	
-Carriage Bolts M8-1.25 x 12.....	30
-Button Cap head Screws	
M8-1.25 x 16.....	12
-Flat Head Screws M8-1.25 x 25.....	4
-Hex Bolts M8-1.25 x 20.....	2
-Hex Bolts M8-1.25 x 70.....	1
-Lock Nuts M8-1.25.....	3
-Flange Nuts M8-1.25.....	38
-Extension Spring.....	1

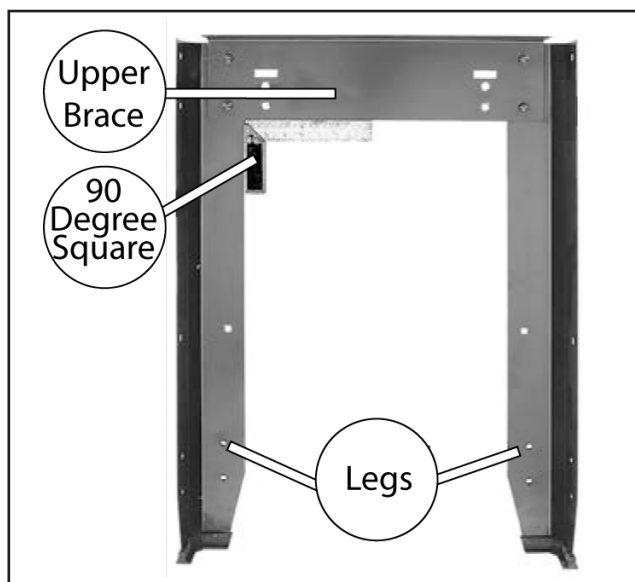


2. Join the wheel assembly with side assembly using (4) M8-1.25 x 16 button cap head screws. The long linkage should be facing outward with the wheels in the downward position.

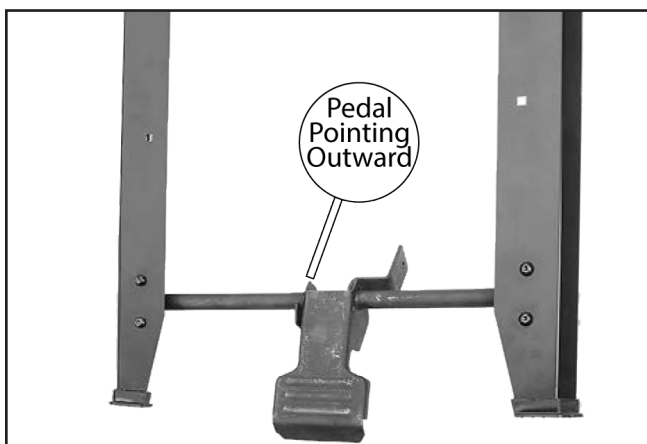


ASSEMBLY INSTRUCTIONS

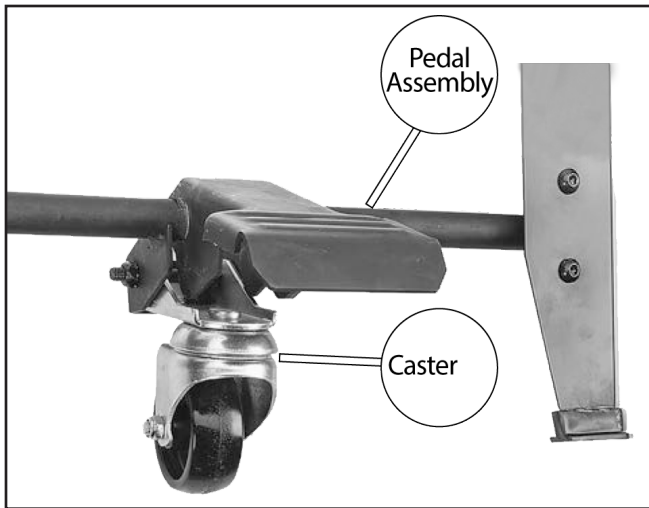
1. Put together the side assembly by connecting one of the front upper braces with two of the legs using (4) M8-1.25 x 12 carriage bolts and (4) M8-1.25 lock nuts. Check that legs are Square before tightening the carriage bolts. Use a 90° square when checking legs.



3. To build the second side assembly follow the same procedure in the first step.
4. Now join the pedal assembly to the second side assembly using (4) M8-1.25 x 16 button cap head screws. Make sure the pedal is facing outwards.

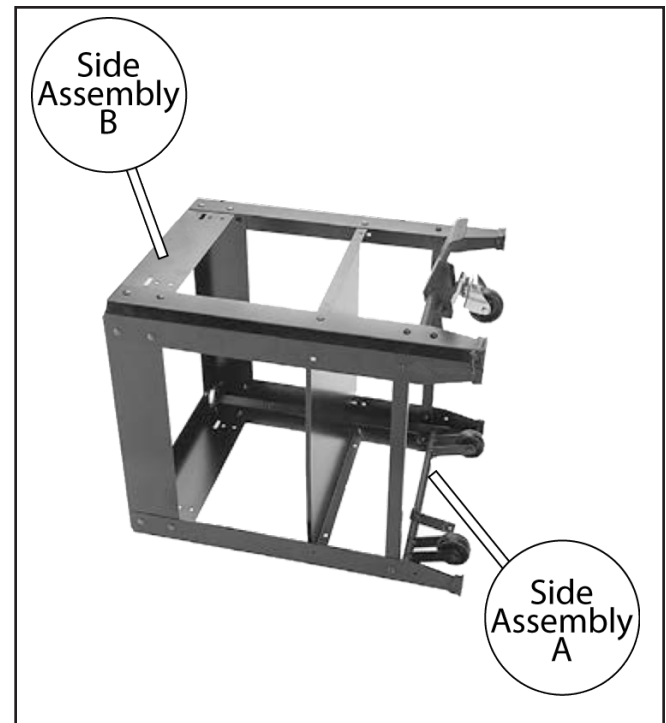


5. Connect the caster to outward facing pedal assembly with (1) M8-1.25 x 70 hex bolt and (1) M8-1.25 lock nut.



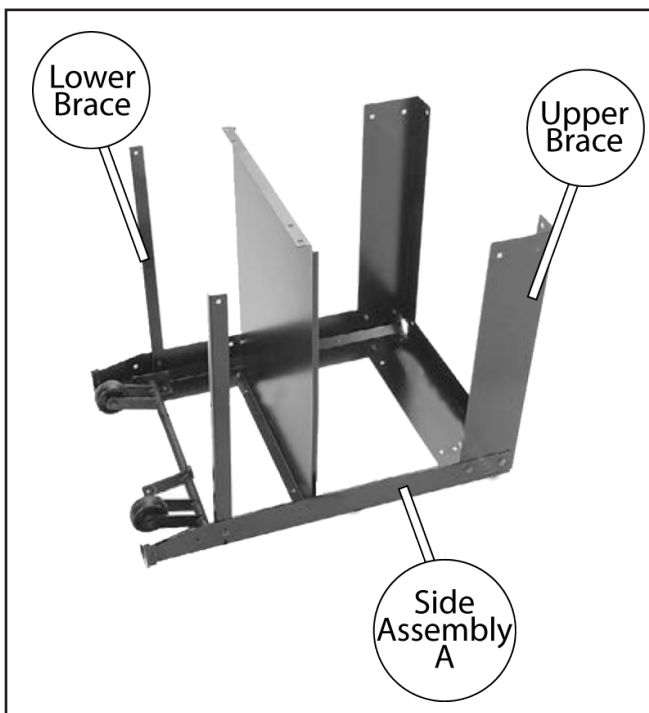
8. Now join both of the side assemblies together using (6) M8-1.25 x 12 carriage bolts and (6) M8-1.25 lock nuts.

9. Join the second side assembly with lower braces using (2) M8-1.25 x 16 button cap head screws and (2) M8-1.25 lock nuts.

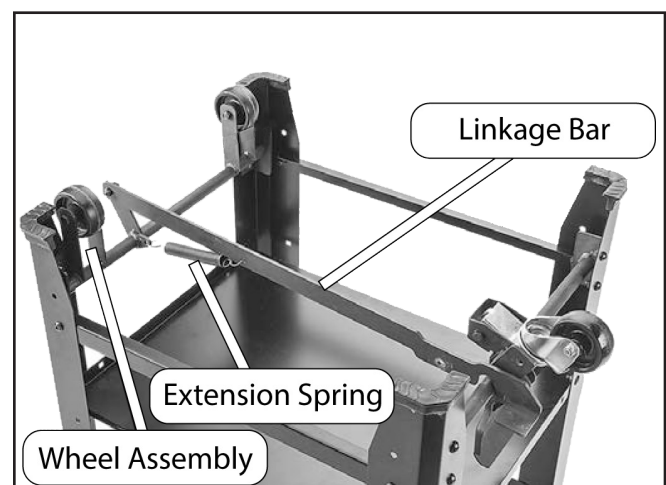


6. Connect the (2) upper braces and shelf to first side assembly using (6) M8-1.25 x 12 Carriage bolts and (6) M8-1.25 lock nuts.

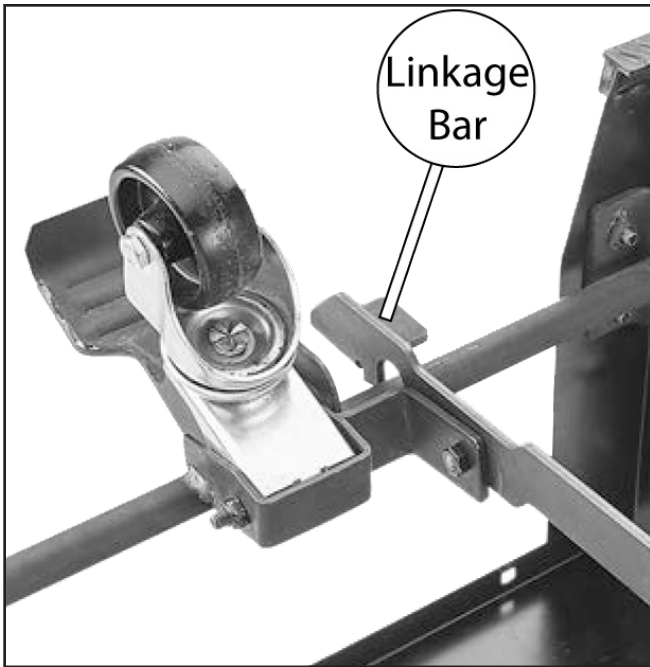
7. Now attach the two lower braces to the first side assembly using (2) M8-1.25 x 16 Button cap head screws and (2) M8-1.25 lock nuts.



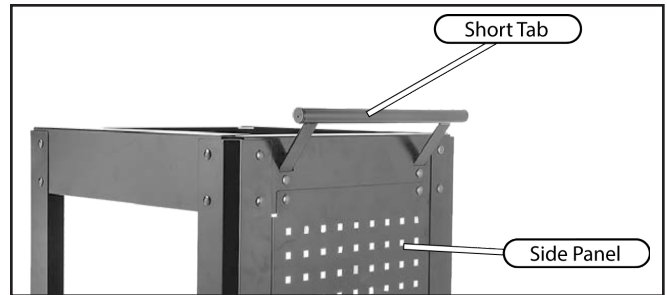
10. Turn workstation assembly upside down and attach linkage bar to wheel assembly using (1) M8-1.25 x 20 hex bolt and (1) M8-1.25 lock nut loosely to allow movement. Connect extension spring to linkage bar and wheel assembly.



11. Connect the linkage bar to the pedal assembly loosely using (1) M8-1.25 x 20 hex bolt and (1) M8-1.25 lock nut to allow movement of pedal.



13. Connect the handle to the top of the side panel using (4) M8-1.25 x 12 carriage bolts and (4) M8-1.25 lock nuts. Handle should be installed on the same side as the foot pedal.

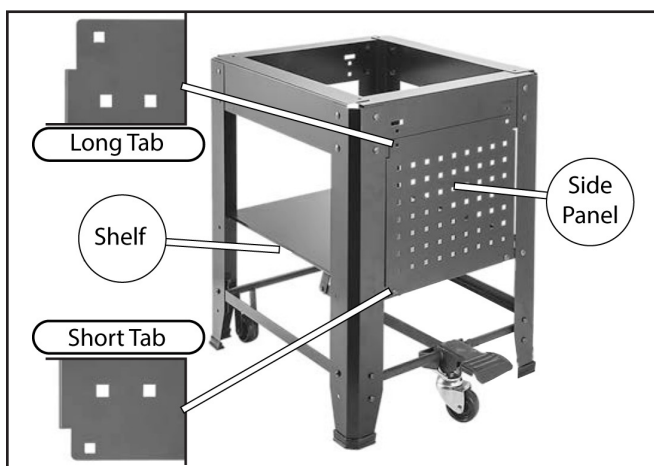


14. Repeat Step 12 to attach the other side panel on the opposite side of the workstation assembly.

15. Fasten the tool holder and top side panel using (2) M8-1.25 x 12 carriage bolts and (2) M8-1.25 lock nuts.



12. Return the workshop table assembly back to its upright position to attach bottom of side panel to table assembly shelf using (2) M8-1.25 x 12 carriage bolts and (2) M8-1.25 lock nuts



16. Fasten the table top into place using (4) M8-1.25 x 25 flat head screws and M8-1.25 hex nuts.



NOTE

Make sure that everything is fastened firmly and securely in place and that the wheel and pedal mechanism function smoothly.

Moving Universal Workshop Stand

Using your foot push the lifting pedal foot lever down to raise the table on to its wheels. Once the universal workshop stand has been lifted on to its wheels carefully maneuver it to required location.

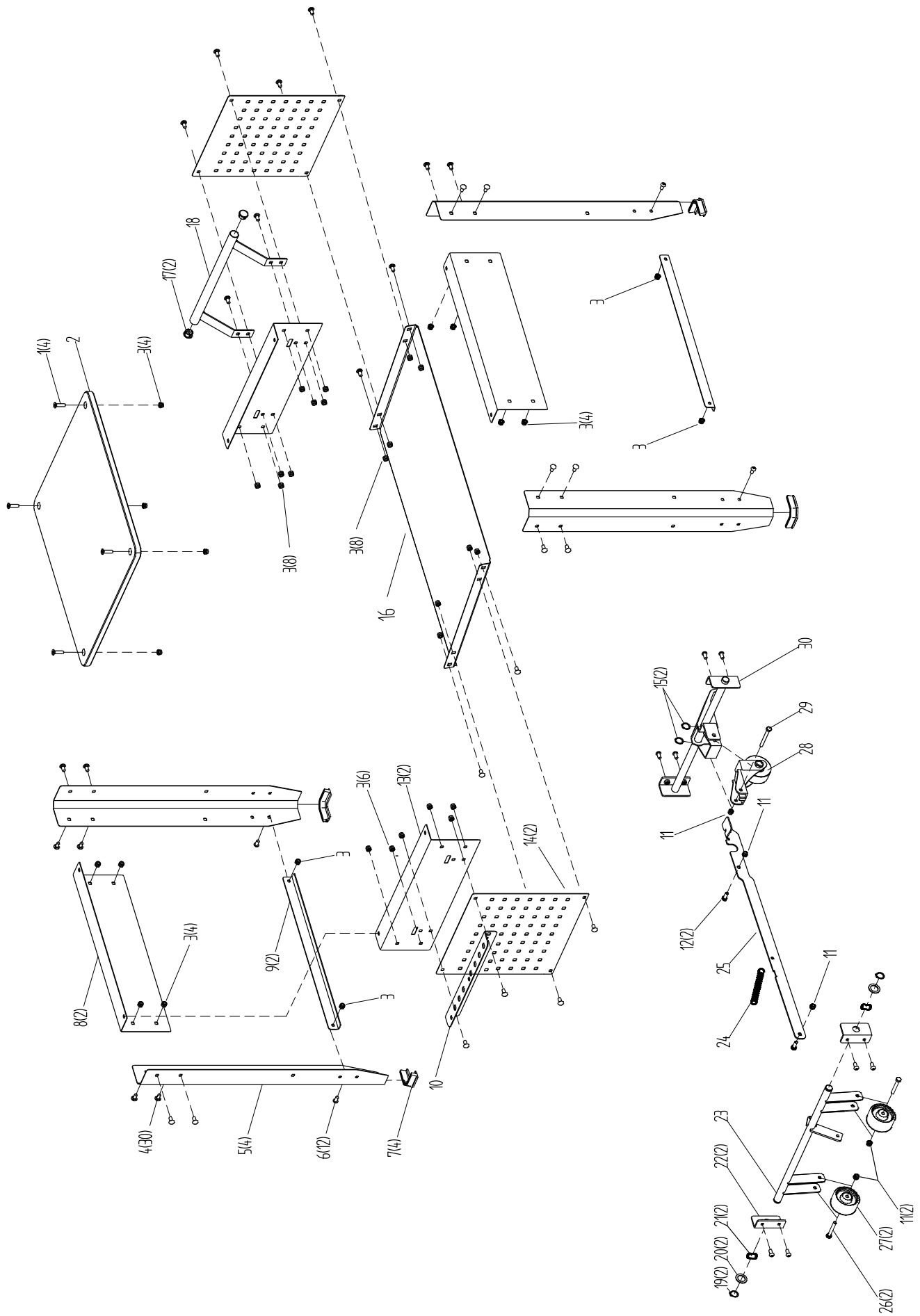
To Lower the table once in desired location depress the smaller release linkage pedal with your foot and table will be lowered back on to its feet.

WARNING!

Any sudden or abrupt movement may cause the unit to tip over heightening the risk of serious personal injury and property damage.

B3620 PARTS LIST

No.	Part No.	Description	Specification	Quantity (pcs)
1	B3620001	Countersunk Head Screw	M8*30	4
2	B3620002	Work Table		1
3	B3620003	Flange Nut	M8	38
4	B3620004	Square Neck Bolt	M8*16	30
5	B3620005	Support Leg		4
6	B3620006	Hex Socket Button Head Screw	M8*16	12
7	B3620007	Foot		4
8	B3620008	Side Plate 1		2
9	B3620009	Support Pole 1		2
10	B3620010	Tool Plate	t0.8	1
11	B3620011	Lock Nut	M8	5
12	B3620012	Hex Headed Bolt	M8*20	2
13	B3620013	Side Plate 2		2
14	B3620014	Square Hole Hanging Board		2
15	B3620015	Clamping Ring	φ20	2
16	B3620016	Bevel Table		1
17	B3620017	Cover		2
18	B3620018	Handle		1
19	B3620019	Shaft Ring	φ20	2
20	B3620020	Washer	φ20	2
21	B3620021	Wave Washer	Φ21	2
22	B3620022	Support Frame		2
23	B3620023	Rear Roller Lever		1
24	B3620024	Spring		1
25	B3620025	Drive Rod		1
26	B3620026	Hex Bolt	M8*55	2
27	B3620027	Rubber Wheel		2
28	B3620028	Front Wheel		1
29	B3620029	Hex Bolt	M8*70	1
30	B3620030	Front Roller Lever		1



Busy Bee Tools

WARRANTY

Busy bee tools warrants every product to be free from defects in materials and agrees to correct such defects where applicable. This warranty covers 1 year for parts and 90 days for labour (unless specified otherwise), to the original purchaser from the date of purchase but does not apply to malfunctions arising directly or indirectly from misuse, abuse, improper installation or assembly, negligence, accidents, repairs or alterations or lack of maintenance.

Proof of purchase is necessary.

All warranty claims are subject to inspection of such products or part there of and Busy Bee reserves the right to inspect any returned item before a refund or replacement may be issued.

This warranty shall not apply to consumable products such as blades, bits, belts, cutters, chisels, punches etceteras.

Busy Bee shall in no event be liable for injuries, accidental or otherwise, death to persons or damage to property or for incidental contingent, special or consequential damages arising from the use of our products.

RETURNS, REPAIRS AND REPLACEMENTS

To return, repair, or replace a Busy Bee Tools product, you must visit the appropriate Busy Bee Tools show-room or call 1-800-461-BUSY. For replacement parts directly from Busy Bee Tools, for this machine, please call 1-800-461-BUSY (2879), and have your credit card and part number handy.

- All returned merchandise will be subject to a minimum charge of 15% for re-stocking and handling with the following qualifications.
- Returns must be pre-authorized by us in writing.
- We do not accept collect shipments.
- Items returned for warranty purposes must be insured and shipped pre-paid to the nearest warehouse
- Returns must be accompanied with a copy of your original invoice as proof of purchase. Returns must be in an un-used condition and shipped in their original packaging a letter explaining your reason for the return. Incurred shipping and handling charges are not refundable.
- Busy Bee will repair or replace the item at our discretion and subject to our inspection.
- Repaired or replaced items will be returned to you pre-paid by our choice of carriers.
- Busy Bee reserves the right to refuse reimbursement or repairs or replacement if a third party without our prior authorization has carried out repairs to the item.
- Repairs made by Busy Bee are warranted for 30 days on parts and labour.
- Any unforeseen repair charges will be reported to you for acceptance prior to making the repairs.
- The Busy Bee Parts & Service Departments are fully equipped to do repairs on all products purchased from us with the exception of some products that require the return to their authorized repair depots. A Busy Bee representative will provide you with the necessary information to have this done.