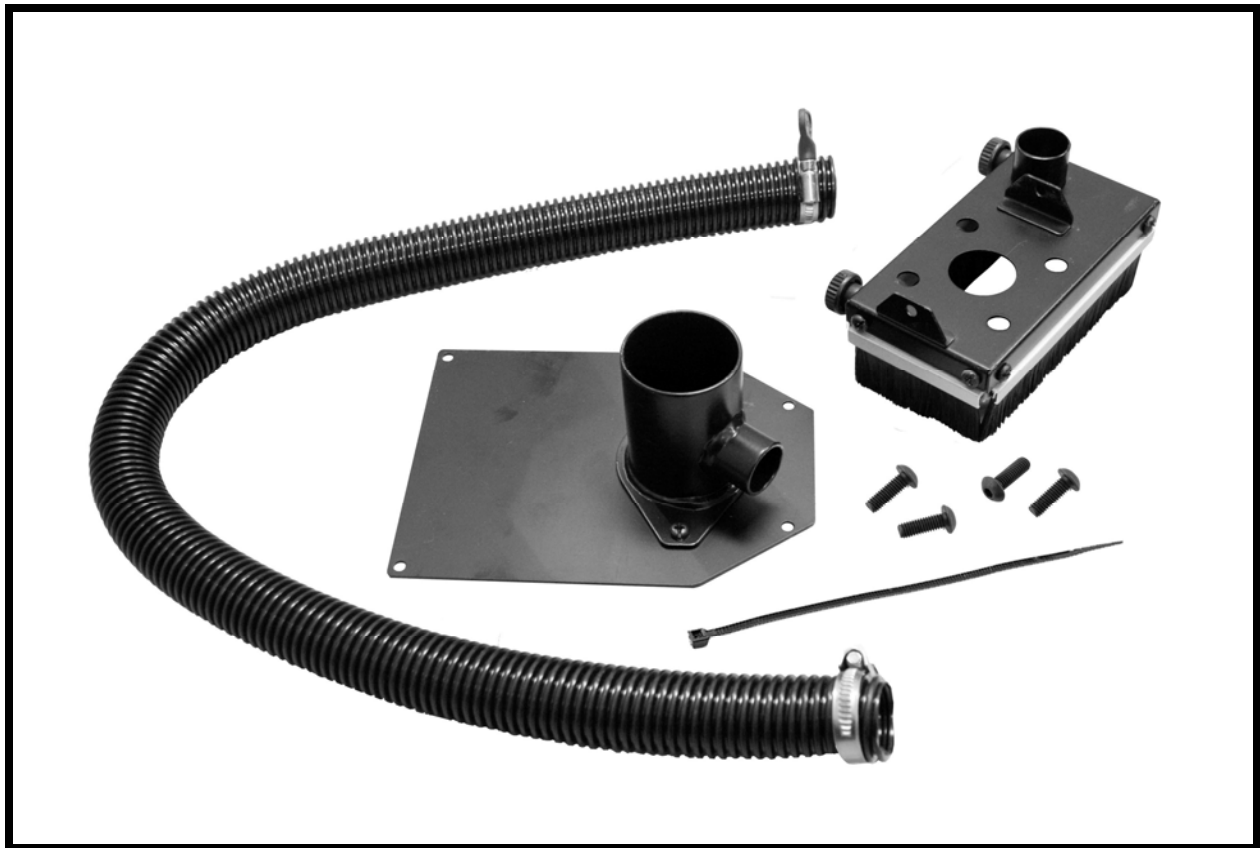




MODEL CARVERDC13

DUST COLLECTION SYSTEM

FOR 13" IntelliCarve CNC Machine



COPYRIGHT 2013 © Busy Bee Tools

NO PORTION OF THIS MANUAL MAY BE PRODUCED
WITHOUT THE WRITTEN CONSENT OF BUSY BEE TOOLS



ASSEMBLY

Disconnect the machine from the power source if already connected.

Attach the dust collection skirt to the spindle head assembly and secure it using screws provided. See figure-1.

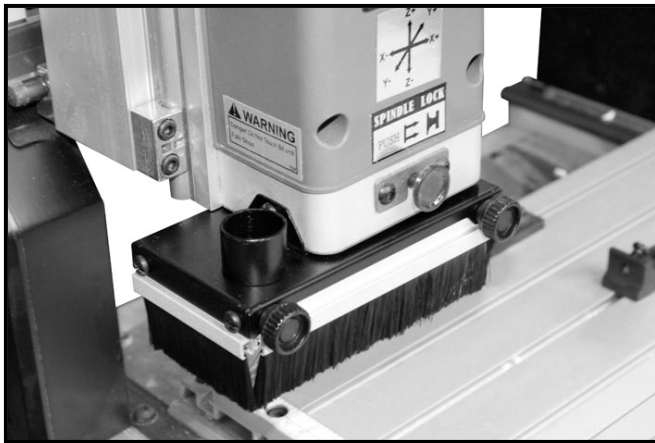


Figure-1 Installing the collection skirt

Remove the side cover screws and remove the side cover.



Figure-2 Removing the side cover

Once the side cover is removed, attach the dust port in its place and secure it using the four screws removed earlier. See figure-3.

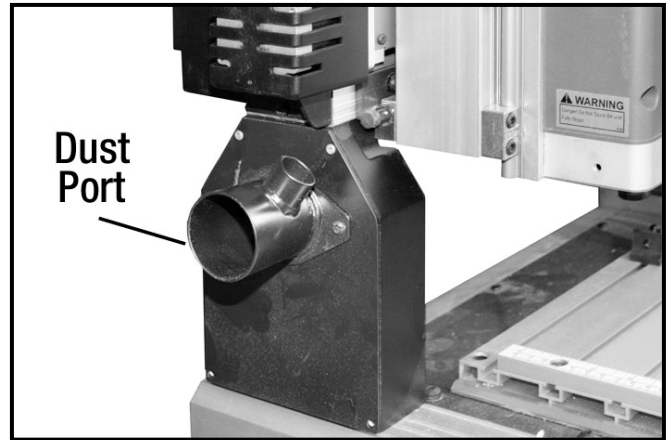


Figure-3 Installing the dust port

Attach the hose with one end on to the dust collection skirt and the other end to the dust port and tighten the hose clamps on both ends.

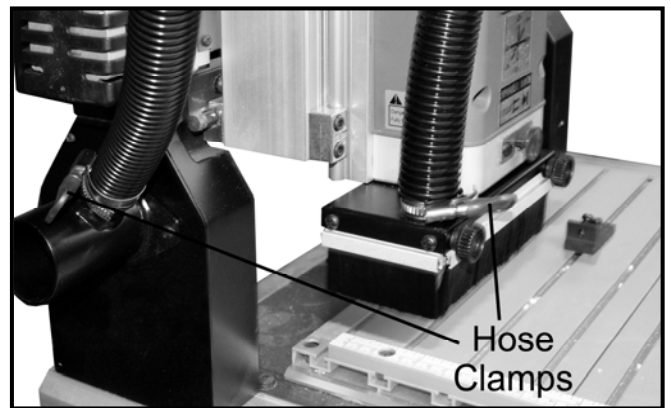


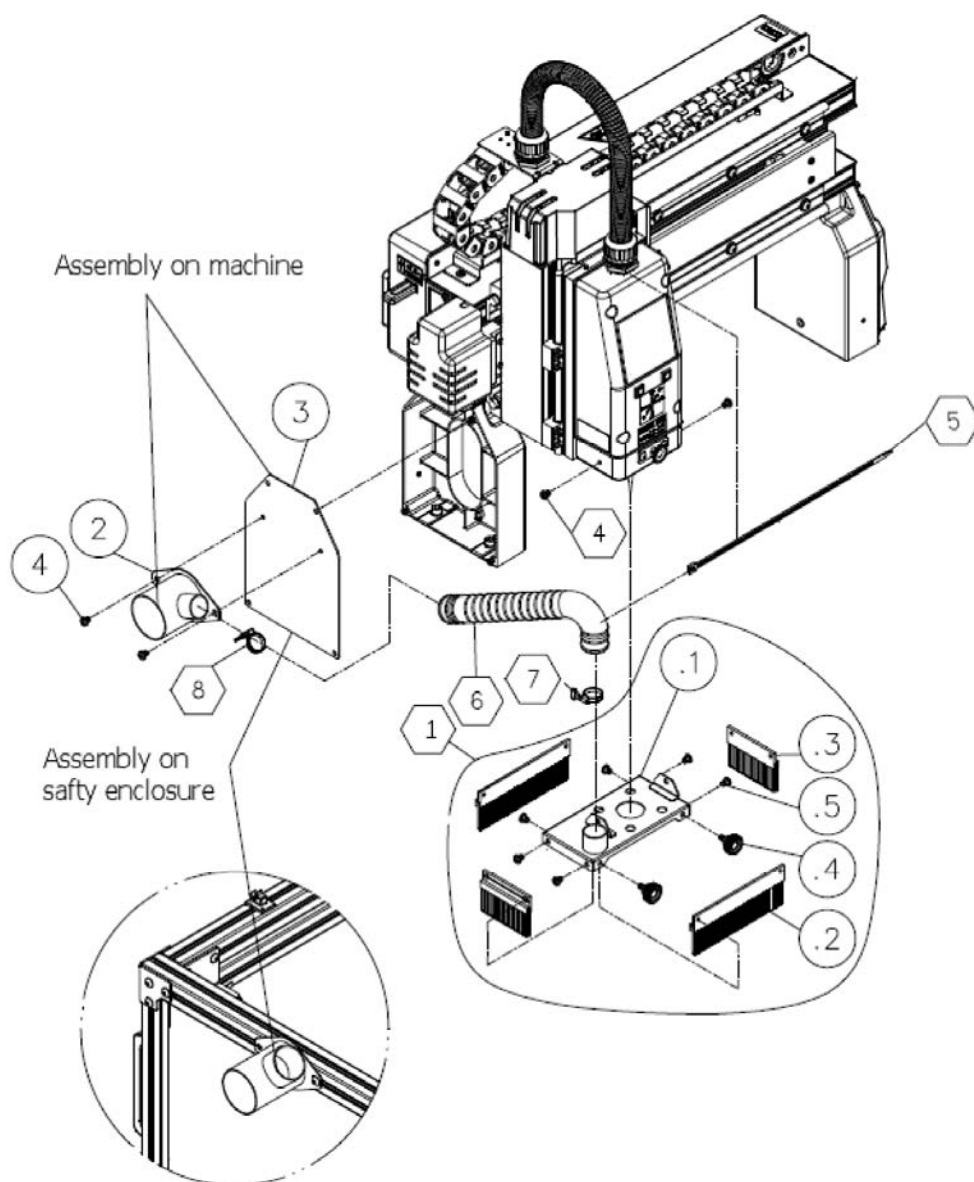
Figure-4 Tightening the hose clamps

The kit comes with a tie wrap to tie the hoses in place. Once the hose clamps are tightened, secure the hoses in place using the tie wrap. See figure-5.



Figure-5 Hoses secured with the tie wrap

CARVERDC13 PARTS DIAGRAM AND LIST



Key	Part No.	Descriptions		Q'ty
	FH0019	Brush & Dust Collect System		1
1	923490-000	Brush Assembly		1
.1	173522-008	Plate		1
.2	660208-000	Brush - Long		2
.3	660209-000	Brush - Short		2
.4	230357-000	Thumb Screw		2
.5	000303-101	Round Head Phillips Screw	M5*0.8P*6	6
2	173521-008	Dust Port		1
3	173523-008	Side Cover		1
4	000303-101	Round Head Phillips Screw	M5*0.8P*6	4
5	021009-000	Tie Wrap	ALT-300M-B	1
6	042620-002	FLEXIBLE HOSE	25*800mm	1
7	042622-001	Clip	1.5"	2