



OWNER'S MANUAL



CT073 – 10" TABLE SAW



COPYRIGHT © 2003 BY CRAFTEX INDUSTRIES INC.

NO PORTION OF THIS MANUAL MAY BE REPRODUCED WITHOUT
THE WRITTEN CONSENT OF CRAFTEX INDUSTRIES INC.



CT073 10" LEFT TILTING ARBOR SAW

INDEX

GENERAL SAFETY INSTRUCTIONS	Page 3
SPECIFIC SAFETY INSTRUCTIONS	Page 4
CT073 Features	Page 5
Unpacking	Page 6
Assembly	Page 7
Extension Tables	Page 7
Blade Guard & Splitter	Page 7
Installing Blade Guard	Page 8
Adjusting Blade Guard	Page 8
Adjusting Blade Guard, Continued	Page 9
Arbor Extension	Page 9
Blade Installation	Page 9
Hand Wheels	Page 10
Blade Alignment	Page 10
Adjusting Saw Table	Page 10
Adjusting Saw table, Continued	Page 11
Table Insert	Page 11
Rip Fence Assembly	Page 11
Rip Fence Assembly, Continued	Page 12
Rip Fence Adjustments	Page 12
Electrical Diagram & Wiring	Page 13
Electrical Diagram & Wiring Continued	Page 14
Operation	
Blade Height Adjustment	Page 15
Blade Tilt Adjustment	Page 15
Mitre Gauge Adjustment	Page 15
Maintenance	Page 16
Mitre Gauge Schematic Drawing & Parts List	Page 17
Blade Guard Schematic Drawing & Parts List	Page 18
Upper Assembly Schematic Drawing	Page 19
Lower Assembly Schematic Drawing	Page 20
Assembly Parts List	Page 21
Assembly Parts list, Continued	Page 22
Cabinet Schematic Drawing	Page 23
Cabinet Parts List	Page 24
Fence Schematic Drawing	Page 25
Fence Parts List	Page 26
Warranty	Page 27

GENERAL SAFETY INSTRUCTIONS

EXTREME CAUTION SHOULD BE USED IN OPERATING ALL POWER TOOLS. KNOW YOUR POWER TOOL, BE FAMILIAR WITH ITS OPERATION. READ THE OWNER'S MANUAL AND PRACTICE SAFE USAGE PROCEDURES AT ALL TIMES.

- ❑ **CONNECT** your machine **ONLY** to the matched and specified power source.
- ❑ **WEAR SAFETY GLASSES, RESPIRATORS, HEARING PROTECTION and SAFETY SHOES** when operating heavy machinery. **Always wear safety glasses.**
- ❑ **DO NOT** wear loose clothing or jewellery when operating machinery.
- ❑ **A Safe Environment is important.** Keep the area free of dust, dirt and other debris in the immediate vicinity of the machine.
- ❑ **BE ALERT!** Do Not Use prescription or other drugs that may affect your ability or judgement to safely use this machine.
- ❑ **DISCONNECT** the power source making other adjustments or repairs.
- ❑ **NEVER** leave an operating tool unattended.
- ❑ **NEVER** reach over the table when the tool is in operation.
- ❑ **ALWAYS** keep blades, knives or bits sharp and properly aligned.
- ❑ **ALWAYS** keep all safety guards in place and ensure their proper function.
- ❑ **ALWAYS** use push sticks and featherboards to safely feed your work through the machine.
- ❑ **ALWAYS** make sure that any tools used for adjustments are removed before operating the machine.
- ❑ **ALWAYS** secure your work with the appropriate clamps or vises.
- ❑ **ALWAYS** keep bystanders safely away while operating machinery.
- ❑ **THINK SAFETY. WORK SAFELY.** Never attempt a procedure if it does not feel safe or comfortable.

CRAFTEX CT073 LEFT TILTING ARBOR SAW

SPECIFIC SAFETY INSTRUCTIONS

- ❑ **NEVER** attempt to remove jammed cutoff pieces until the saw blade has come to a full stop.
- ❑ **NEVER** use a saw blade that has a.) Missing carbide teeth, b.) Loose teeth, c.) Chipped or broken teeth.
- ❑ **NEVER** stand directly in line with the saw blade when feeding stock into the saw.
- ❑ **NEVER** allow visitors or helpers to stand in line with the saw blade.
- ❑ **NEVER** allow anyone to “assist” you by holding your workpiece at the outfeed end.
- ❑ **NEVER** attempt to cut stock “freehand”, always use the rip fence or mitre gauge.
- ❑ **ALWAYS** make sure that the rip fence is properly squared to the saw blade to prevent kickback.
- ❑ **ALWAYS** make sure that your saw is in a stable position. Cutting long, heavy stock may alter the stability of the CT073. In the event that this could be a regular circumstance, the saw should be bolted to the floor.
- ❑ **ALWAYS** be sure that the mobile base wheels are firmly locked before turning the saw on.
- ❑ **ALWAYS** use an outfeed table to support long pieces of stock.
- ❑ **ALWAYS** use a feather board and/or hold-downs to support your workpiece.
- ❑ **ALWAYS** turn the saw off in the event of a motor stall or blade jam before attempting to remove the stock.
- ❑ **ALWAYS** use only those accessories designed specifically for the CT073 table saw.

CRAFTEX CT073 LEFT TILTING ARBOR SAW

FEATURES

The Craftex CT073 Left Tilting Arbor Saw is a precision-built tool that will provide you with many years of excellent service.

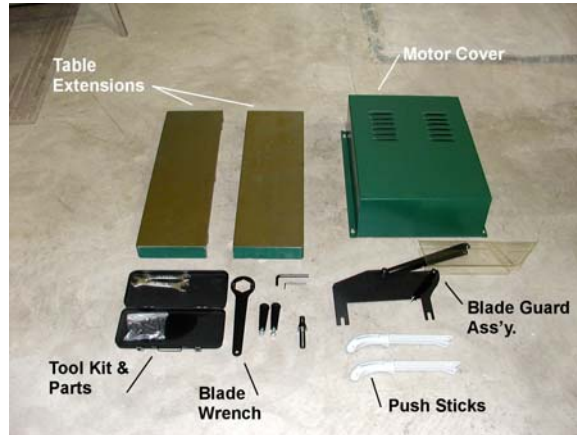
- ❑ Motor – 3HP, 220v, single phase
- ❑ Blade Speed – 4,140 RPM's.
- ❑ Triple 'V'-belt drive.
- ❑ Cast-iron trunions.
- ❑ Sealed ball bearings.
- ❑ Precision ground cast-iron table top.
- ❑ Precision ground cast iron table extensions
- ❑ 'T'-slot Mitre gauge.
- ❑ Magnetic power switch.
- ❑ Overall table size with extensions – 30" x 48".
- ❑ Maximum depth of cut at 90 degrees – 3".
- ❑ Maximum depth of cut at 45 degrees – 2 1/8"
- ❑ Shipping weight – 270kg.
- ❑ Includes a heavy-duty mobile base with wheel locks.
- ❑ 'T' type heavy-duty cam lever rip fence.
- ❑ Magnifying cursor lens on rip fence.
- ❑ Arbor extension included.
- ❑ Two push sticks included.

CT073 10" LEFT TILTING ARBOR SAW UNPACKING

Carefully remove all packing materials and recycle where facilities exist. Safety glasses and work gloves should be worn when doing this as there may be sharp nails, screws or staples that could cause personal injury.

Open all cartons and set the parts to one side being careful to see that all cartons are completely empty before discarding them.

Your Crafttex CT073 table saw is shipped with a protective coating on most exposed cast-iron surfaces and this coating should be removed prior to assembly. Using a cloth and mineral spirits, wipe the surfaces clean. After the parts have dried, apply a coat of paste wax and then buff dry. This will protect the surfaces from future corrosion.



The Cam-Lever 'T' Rip Fence and Mobile Base will be found in separate cartons and they should be opened, checked and put to one side for later installation.



Mitre Gauge



Also included in the packaging of the CT073 is a 'T' slot mitre gauge.

Mobile Stand



A heavy-duty mobile stand is included as standard equipment in the CT073.

CT073 10" LEFT TILTING ARBOR SAW ASSEMBLY

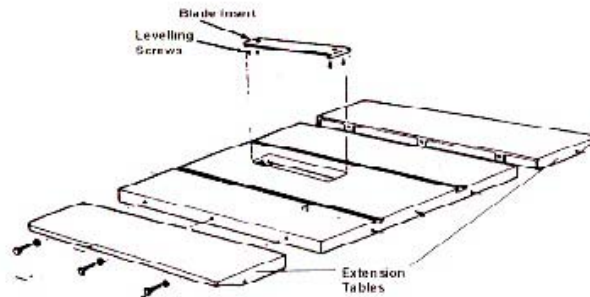
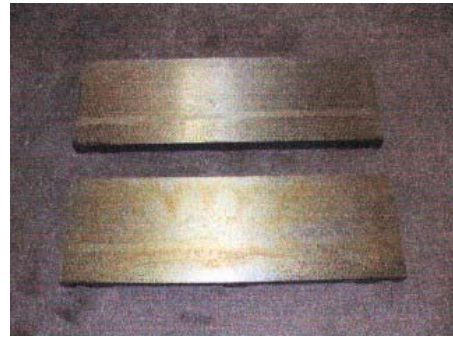
Your Craftex CT073, 10" Table Saw is shipped in an almost fully assembled condition. The exceptions are:

1. Cast-iron Extension Tables.
2. Blade Guard and Splitter.
3. Rip Fence Rails.
4. Rip Fence.
5. Hand Wheels.

Place your table saw on a flat and level surface before proceeding with the assembly process. Be sure that the mobile base is locked.

Extension Tables

Assemble the cast-iron extension tables as indicated in the illustration being certain that the tables are perfectly level with the main saw table. The assembly bolts will be found in the parts packages.



Blade Guard and Splitter

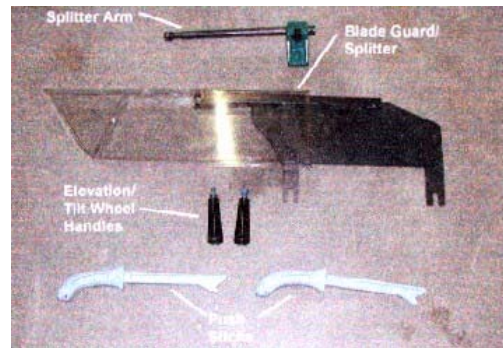
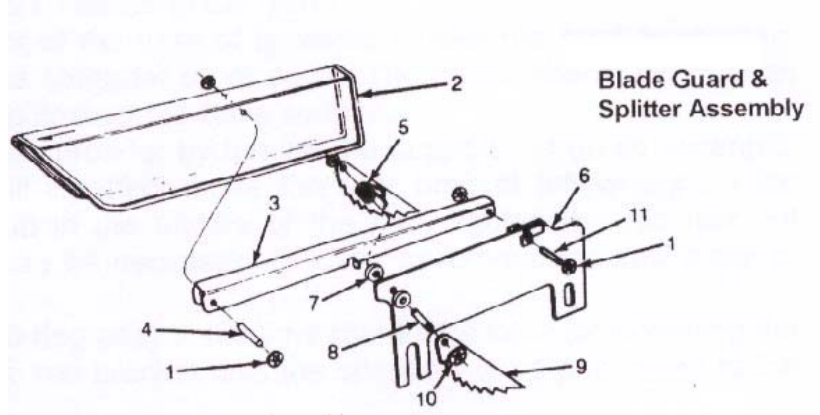
- ❑ Install the blade guard bracket with the 2 socket-head bolts and finger tighten only.
- ❑ Insert the rod through the hole in the rear trunion and secure with a lock washer and nut. The threads of the guard are cut on an eccentric. This allows for the adjustment of the back of the blade guard. By rotating the support rod the rod will move off centre thus allowing for various positions. Alignment and final tightening will happen when the blade guard is installed.

CT073 10" LEFT TILTING ARBOR SAW ASSEMBLY, CONTINUED

Installing the Blade Guard

- ❑ Position the blade guard so that it points to the front of the saw table.
- ❑ Attach the front of the spreader to the front attachment bracket with a hex bolt and washer. Hand tighten to allow for further adjustment.
- ❑ Attach the rear of the spreader to the rear guide bracket. Fasten with the attachments bolt and washer. Hand tighten only.
- ❑ The blade guard is now installed but not useable at this point.

Be sure that the blade guard and the anti-kickback pawls are spring loaded forcing them down to the table surface. Both the blade guard and the pawls should return to the table surface after being lifted.



Adjusting the Blade Guard

IMPORTANT: The spreader must *always* be parallel to the saw blade and in the center of the kerf made by the saw blade. Not doing so will interfere with the saw cut and cause an unsafe guard operation.

- ❑ Raise the saw blade to its full height.
- ❑ Adjust the tilt angle to 90 degrees and use a square to verify this and lock the tilt wheel.
- ❑ When adjusting the spreader, use a straight edge length-wise to be sure that the spreader is in fact trailing in the ***middle*** of the kerf. Additionally, be sure that the spreader is perpendicular to the saw table.
- ❑ Align the front of the spreader to the saw blade.

CT073 10" LEFT TILTING ARBOR SAW

ASSEMBLY, CONTINUED

Adjusting the Blade Guard, Continued

- ❑ To adjust the height of the front spreader, loosen the front attachment bolt and position the spreader up or down. The correct height will allow the guard to just touch the table surface.
- ❑ Align the rear of the spreader by turning the support rod on its eccentric. Turning the rod will in effect move the rear bracket left or right. After the spreader is lined up in the center of the kerf, tighten the rod hex nut securely. Note; it may be necessary to remove the saw blade to tighten the hex nut.
- ❑ Adjust the angle (90 degrees) of the spreader to the table by loosening the hex bolt. Rotate the rod bracket until the spreader is perpendicular to the saw table.
- ❑ Adjust the height of the rear spreader so that the top edge is parallel with the table by loosening the rear bolt attachment bolt. When completed, tighten all nuts and bolts.
- ❑ The blade guard should now be fully assembled and operational. However, be certain that all connections are secure and that the spreader is centered in the kerf and that the guard and pawls automatically return to the table surface.

Arbor Extension

To install the 1" o.d. x 3" long arbor extension generally used for dadoes, thread it into the arbor by hand in a counter-clockwise rotation. Secure the extension by inserting the 8mm hex wrench into the socket at the outboard end of it and tighten.

The arbor itself is held in place with the blade spanner wrench. Place the spanner on the inside blade flange with the two prongs inserted into the two holes in the flange. Seat the arbor extension firmly but do not over-tighten.

Reverse the above procedure for removal.

Blade Installation

Position your saw blade on the arbor so that the blade is flush against the inside of the arbor flange and with the teeth pointing towards the *front* of the table saw. Place the outside blade flange on the arbor with the hollow side against the saw blade edge. Secure the flange and blade with the arbor nut and hand tighten. Tighten the arbor nut with the spanner.

CT073 10" LEFT TILTING ARBOR SAW

ASSEMBLY, CONTINUED

Hand Wheels

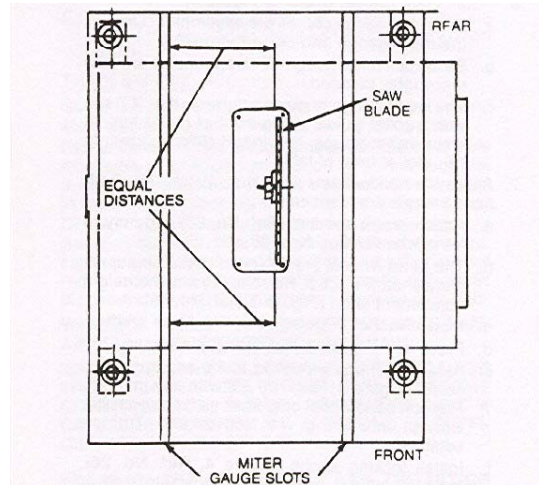
The blade elevation and blade tilt hand wheels are factory installed. The crank handles for these are found in the parts package and are simply screwed into the wheels in the threaded holes provided.

Blade Alignment

The Craftex CT073 Table Saw is shipped from the factory fully aligned so that the miter slots are parallel to the saw blade. However, shipping and rough handling may have affected this. It is suggested that this alignment be checked prior to operating the saw.

A simple method of checking the alignment follows.

- ❑ Clamp a dowel to the front of the mitre gauge.
- ❑ Raise the saw blade and pick out a saw tooth on the front of the blade and set the dowel in front of the mitre gauge so that the dowel end just touches the edge of the saw tooth. Mark that tooth with a felt marker.
- ❑ Rotate the saw blade by hand to bring the marked tooth to the rear of the saw.
- ❑ Gauge this tooth with the dowel. If the tooth is in the same position, the blade is parallel to the miter slots and no further adjustments are required.



Adjusting the Saw Table for Parallel

- ❑ Should an adjustment be required, proceed as follows:
- ❑ Loosen the hex head cap screws fastening the table to the sheet metal base cabinet.
- ❑ Carefully shift the table to position it so that the saw blade is parallel to the mitre gauge slots.

CT073 10" LEFT TILTING ARBOR SAW ASSMEBLY, CONTINUED

Adjusting the Saw Table for Parallel, Continued

- ❑ The saw blade must also be centred within the table insert opening.
- ❑ Securely tighten the hex head cap screws.

Table Insert

The table blade insert is installed at the factory and should be level with the saw table. Should this not be the case however, remove it and invert it. You will find adjustment screws at the four corners of the insert. Adjust these in or out until the insert sits perfectly flush with the tabletop.

Rip Fence Assembly

The CT073 is equipped with one of the finest 'T' type rip fences available. This cam lever fence incorporates a Micro-adjustment and a Magnifying Cursor Lens for precision cutting.

- ❑ Install the front rail to the leading edge of the saw table using four pan-head screws and lock washers.
- ❑ Using a combination square, set the tail to 20mm. Use this measurement along the front of the saw tabletop so that the front rail sits 20mm below the tabletop.
- ❑ Tighten all the screws.
- ❑ Install the rear fence rail to the back edge of the saw table using four hex screws and lock washers.

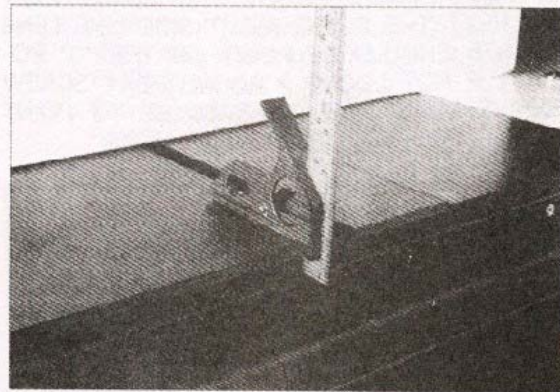


FIG 1

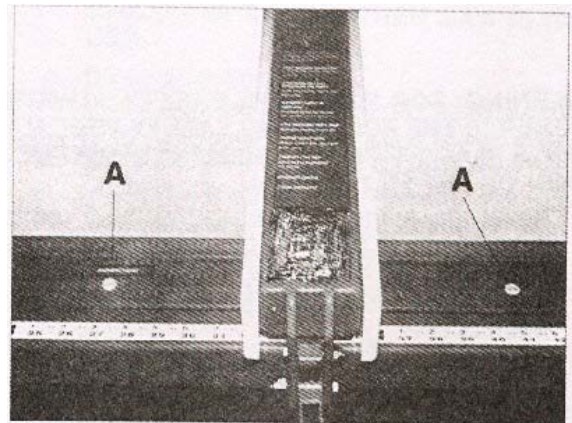


FIG 2

CT073 10" LEFT TILTING ARBOR SAW

ASSEMBLY, CONTINUED

Rip Fence Assembly, Continued

- ❑ Use the combination square and set the tail to 12mm. Use this along the back surface so that the rear rail sits 12 mm below the table surface.
- ❑ Tighten all the screws.
- ❑ Attach the guide rail to the front rail with the six 6mm screws and lock washers.

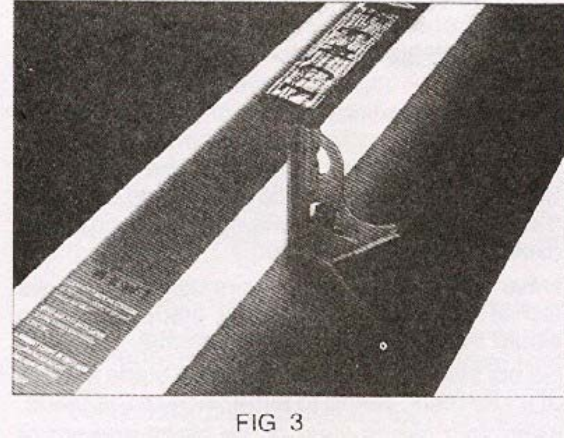


FIG 3

Rip Fence Adjustments

To adjust the rip fence so that it is flush with the table saw surface, rotate one or both of the nylon screws to raise or lower the fence.

The edge surfaces of the rip fence must be perpendicular to the table surface. Use a combination square for verification and adjust the nylon screws as required.

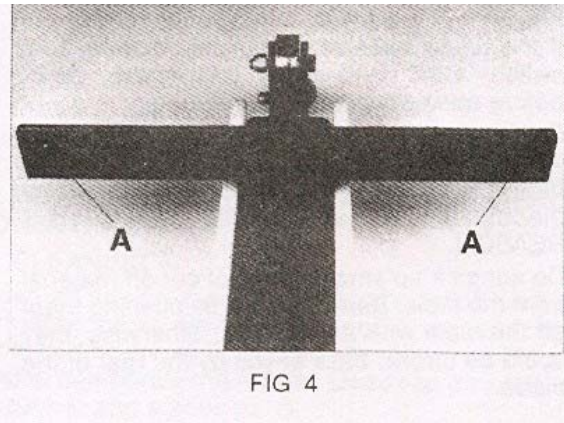


FIG 4

To adjust the fence so that it is parallel to mitre slots, remove the fence and adjust one or both of the setscrews in the 'T'.

To adjust the clamping pressure of the cam lock, unlock the lever and remove the fence from the guide rail. Adjust the two 4mm Allen screws until the fence is held securely when the cam lever is depressed.

NOTE: This has been adjusted at the factory and should not require any further adjusting.

CT073 10" LEFT TILTING ARBOR SAW ELECTRICAL DIAGRAM & WIRING

Important

The CT073 Magnetic Switch is Pre-Wired to the junction box.

The motor to the starter line cord is four conductors. The green conductor is ground while the other three are power conductors. Single-phase power uses only three of these conductors. The three used are green (green/yellow) for ground and any two of the remaining wires. The CT073 is already wired at the magnetic starter. The ground (green) is connected to the ground screw in the box. The black and the brown (red) leads are connected to terminals U/2 and W/6. The white (blue) lead is not used. Check the starter to be sure that the unused lead is white (blue). Once the unused lead is determined, take the motor end of the line cord and tape the unused (white) lead against the line cord jacket.

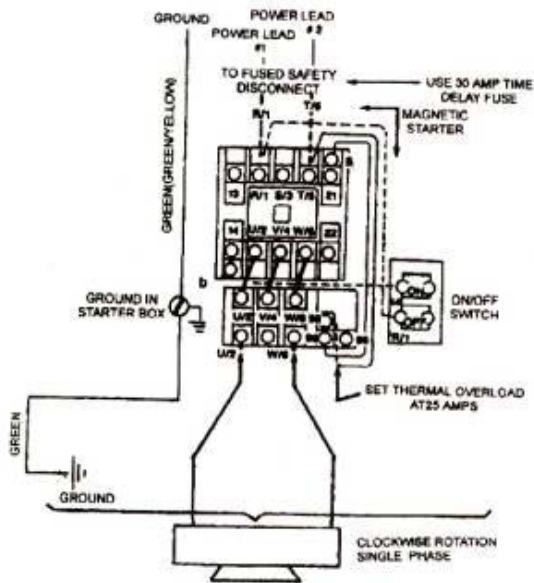


Please see the following electrical diagram on Page 14 for wiring the motor for clockwise rotation, single-phase operation.

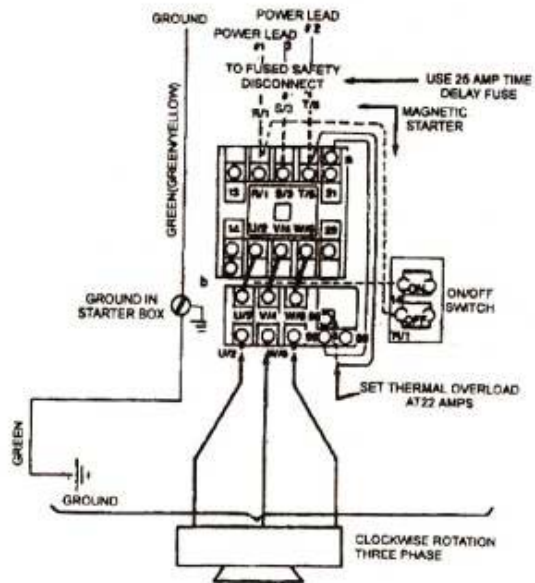
CT073 10" LEFT TILTING ARBOR SAW

ELECTRICAL DIAGRAM & WIRING, CONTINUED

Wiring Diagram For Single Phase



Wiring Diagram For Three Phase



CT073 10" LEFT TILTING ARBOR SAW

OPERATION

Always disconnect the tool from the power source before making any adjustments to the saw.

Blade height Adjustment

- ❑ The blade height is controlled by the hand wheel on the front face of CT073 saw cabinet.
- ❑ Loosen the lock knob; rotate it counter-clockwise approximately three turns.
- ❑ Turn the hand wheel to the desired blade height. Note, the blade should not be raised more than 1/8" above the material being cut.
- ❑ Lock the blade into position by rotating the lock knob clockwise. Do not over tighten.

Blade Tilt Adjustment

- ❑ The saw blade may be set at any angle between 90 and 45 degrees. There are positive stops at both 45 and 90 degrees.
- ❑ The blade tilt is controlled by the hand wheel on the side of the saw cabinet and the tilt angle dial is located on the front face of the cabinet.
- ❑ Loosen the hand wheel lock knob and rotate the hand wheel until the desired angle is reached.
- ❑ Lock the hand wheel by rotating the lock knob. Do not over-tighten

Mitre Gauge Adjustment

- ❑ The mitre gauge supplied with the CT073 Table Saw is equipped with individually adjustable stops at 90 and 45 degrees both left and right. Adjustment to these stops can be made by loosening the locking nut and tightening or loosening the three adjusting screws. Tighten the locking nut.
- ❑ The face of the mitre gauge has two holes for attaching an auxiliary face.
- ❑ The mitre gauge is a precision tool and is guided through either mitre 'T' slot through the use of a guide mounted at the front of the mitre gauge bar.
- ❑ To more easily install the mitre gauge, place the gauge into the slot at the back edge of the saw table and then pull it forward.
- ❑ To operate the mitre gauge, loosen the handle to move the gauge head to the desired angle and tighten the handle.
- ❑ To go beyond the stops at 45 and 90 degrees in either direction, lower the stop pins.

CT073 10" LEFT TILTING ARBOR SAW

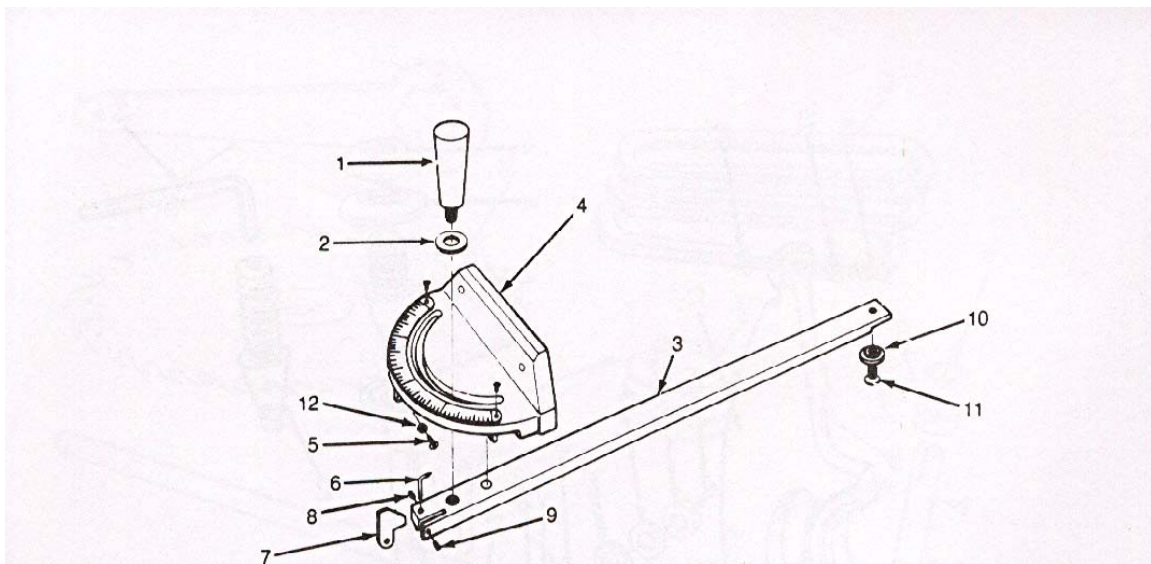
MAINTENANCE

Before performing any maintenance on the CT073 Table Saw be certain that the saw is disconnected from any power source.

- ❑ Clean off any preservative on the saw components with mineral spirits and wipe dry.
- ❑ Avoid getting any of the cleaning material on rubber parts as it may permanently damage them.
- ❑ Use a mild soap and warm water on plastic or rubber parts.
- ❑ The unpainted components such as the precision-ground cast-iron table top should be protected with a coat of paste wax and then buffed dry.
- ❑ Regularly vacuum all sawdust from the saw's interior and vacuum the motor openings as well.
- ❑ Lubricate the trunion and worm gears with a quality white grease on a regular basis.
- ❑ Lubricate all moving parts, internal bearings and wear surfaces being very careful not to allow any lubricant to come in contact with areas where wood will contact.
- ❑ Check drive belts for wear and correct tension on a regular basis.
- ❑ Check that the blade guard and anti kickback pawls operate properly.

CT073 10" LEFT TILTING ARBOR SAW

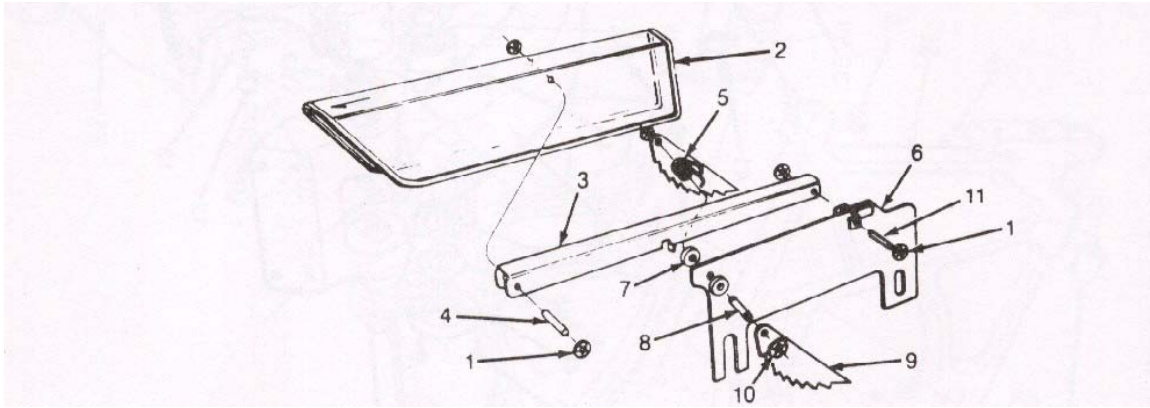
MITRE GAUGE SCHEMATIC & PARTS LIST



No.	Description	Part No.	Qty.
1	Handle	1086.00	1
2	Washer, 10mm	1087.00	1
3	Bar	1088.00	1
4	Gauge	1089.00	1
5	Round-head screw 5mm 80x20	1090.00	3
6	Indicator	1091.00	1
7	Mitre Gauge Stop	1092.00	1
8	Setscrew 6mm 1.0 x 6	0964.00	1
9	Setscrew 6mm 1.0 x 6	0964.00	1
10	Roller Guide	1093.00	1
11	Flat Head Screw 6mm 1.0 x 8	1095.00	1
12	Locking Nut 5mm – 8-	0985.00	3

CT073 10" LEFT TILTING ARBOR SAW

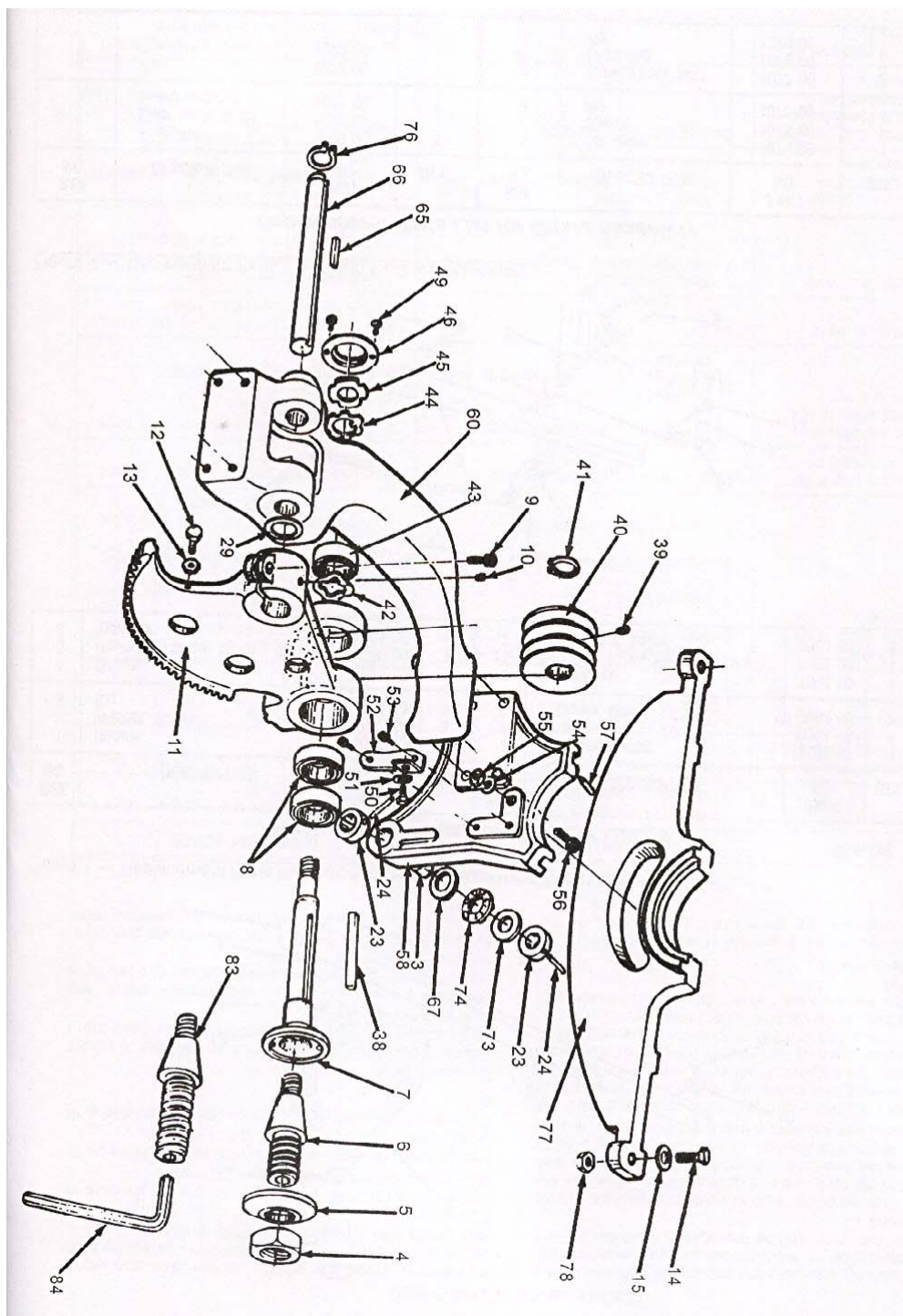
BLADE GUARD SCHEMATIC



No.	Description	Part No.	Qty.
1	Push Nut	1069.00	4
2	Blade Guard	1070.00	1
3	Guard Support	1071.00	1
4	Pin	1072.00	1
5	Spring	1073.00	1
6	Spreader	1074.00	1
7	Spacer	1075.00	2
8	Pin	1076.00	1
9	Anti Kickback Pawl	1077.00	2
10	Snap Ring	1078.00	2
11	Pin	1079.00	1

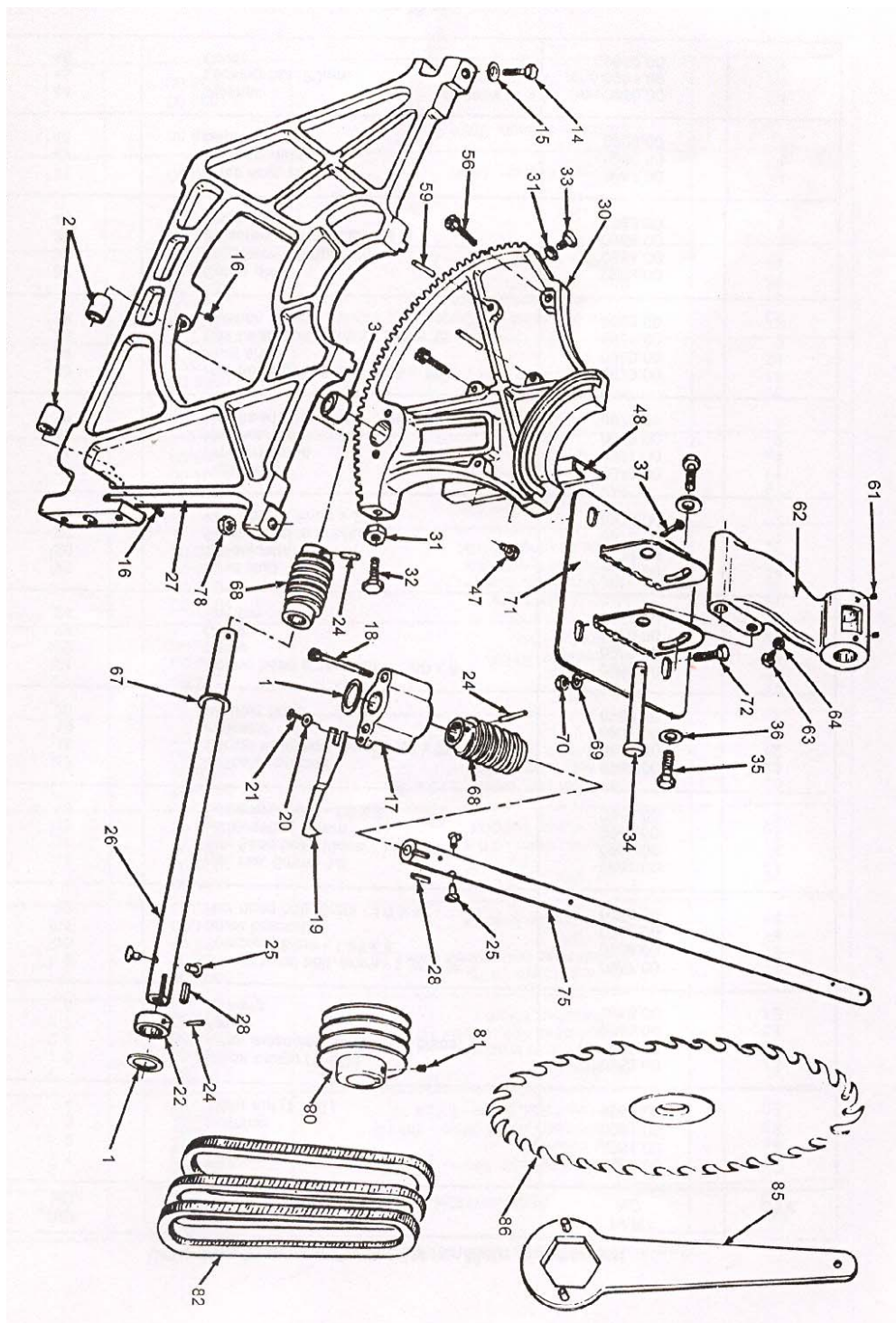
CT073 10" LEFT TILTING ARBOR SAW

UPPER ASSEMBLY SCHEMATIC



CT073 10" LEFT TILTING ARBOR SAW

LOWER ASSEMBLY SCHEMATIC



CT073 10" LEFT TILTING ARBOR SAW ASSEMBLY PARTS LIST

Ref. No	Description	Part No.	Qty.
1	Washer	0950.00	2
2	Bushing	0951.00	2
3	Bushing	0951.00	2
4	Arbor Nut 1" I.D.	0952.00	1
5	Blade Flange 1" I.D.	0953.00	1
6	Arbor Extension for 1" O.D. Blade	0954.00	1
7	Arbor	0955.00	1
8	Bearing	0956.00	2
9	Socket Head Bolt – 1.25 x 25	0957.00	1
10	Setscrew – 8mm – 1.25 x 8	0958.00	1
11	Arbor Bracket	0959.00	1
12	Hex Bolt – 6mm – 1.0 x 12	0960.00	1
13	Hex Nut – 6mm – 1.0	0961.00	1
14	Hex Bolt 10mm – 1.5 x 35	0962.00	4
15	Lock Washer 10mm	0963.00	4
16	Setscrew, 6mm – 1.0 x 6	0964.00	2
17	Indicator Bracket	0965.00	1
18	Socket Head Bolt – 5mm – .80 x 75	0966.00	2
19	Indicator	0967.00	1
20	Washer – 5mm	0968.00	1
21	Round Head Screw – 5mm – .80 x 8	0969.00	1
22	Collar	0970.00	1
23	Collar	0970.00	2
24	Roll Pin	0971.00	5
25	Limit Stud	0972.00	4
26	Tilt Adjustment Shaft	0973.00	1
27	Front Trunion Bracket	0974.00	1
28	Key, 5mm x 5mm x .25	0975.00	2
29	Washer	0976.00	1
30	Front Trunion	0977.00	1
31	Hex Nut, 8mm – 1.25	0978.00	2
32	Hex Bolt 8mm – 1.25 x 35	0970.00	1
33	Hex Bolt 8mm – 1.25 x 35	0979.00	1
34	Pivot Shaft	0980.00	1
35	Hex Bolt 12mm – 1.75 x 15	0981.00	2
36	Washer 12mm	0982.00	2
37	Cotter Pin	0983.00	1
38	Key, 5mm x 5mm x .45	0984.00	1
39	Setscrew, 8mm – 1.25 x 8	0985.00	1
40	Drive Pulley	0986.00	1
41	Snap Ring R22	0987.00	1
42	Bearing Washer	0988.00	1
43	Bearing	0989.00	1
44	Washer	0990.00	1
45	Locking Nut, 20mm	0991.00	1
46	Cover	0992.00	1
47	Socket Head Bolt, 6mm – 1.0 x 12	0993.00	2
48	Dust Collector	0994.00	1
49	Round Head Screw, 5mm – .80 x 8	0969.00	3

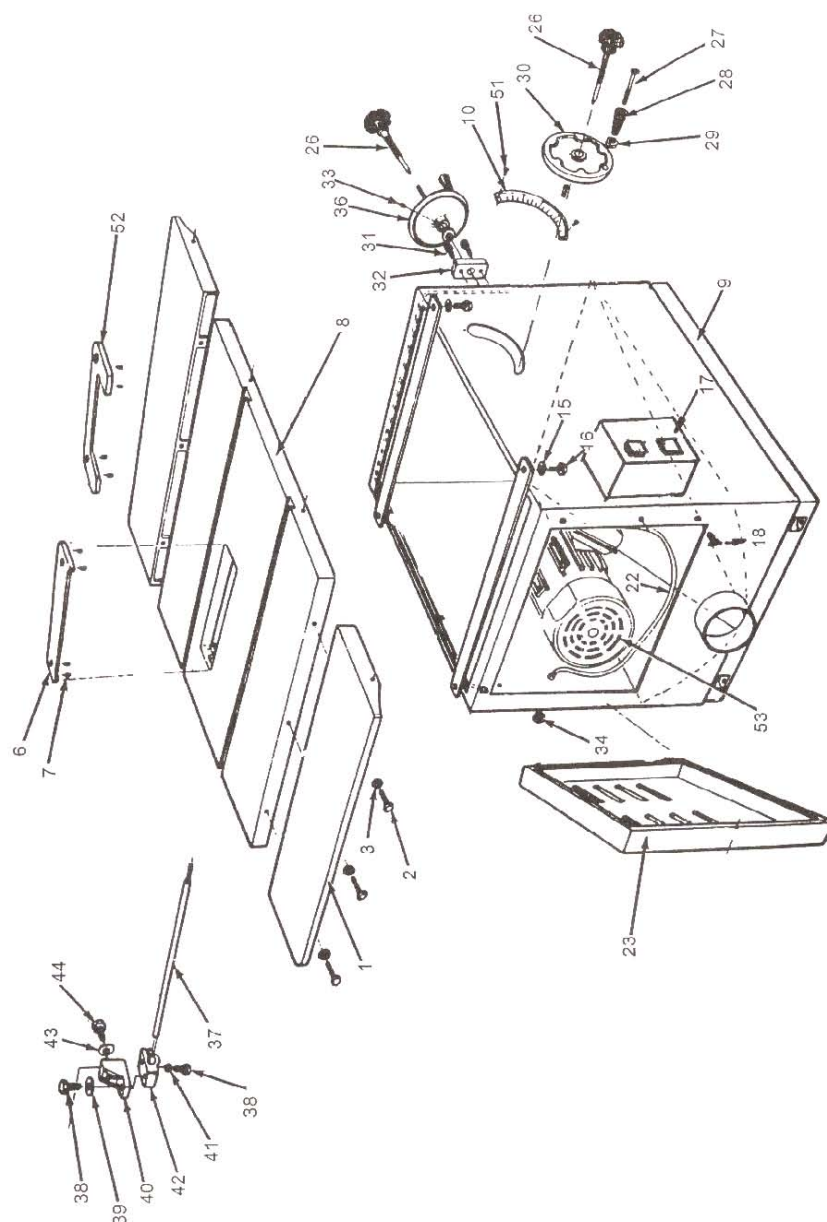
CT073 10" LEFT TILTING ARBOR SAW

ASSEMBLY PARTS LIST, CONTINUED

50	Hex head Bolt, 8mm – 1.25 x 12	0996.00	1
51	Washer, 8mm	0997.00	1
52	Front Support Bracket	0998.00	1
53	Socket Head Bolt, 6mm – 1.0 x 12	0963.00	2
54	Lock Washer, 12mm	1000.00	1
55	Hex Nut, 12mm – 1.75	1001.00	1
56	Socket Head Bolt, 10mm – 1.5 x 25	1002.00	4
57	Pin	1003.00	2
58	Rear Trunion Bracket	1004.00	1
59	Pin	1005.00	2
60	Arm	1006.00	1
61	Setscrew, 6mm – 1.0 x 6	0964.00	2
62	Motor Mount Support	1008.00	1
63	Hex head Bolt, 8mm – 1.25 x 35	0979.00	1
64	Hex head Nut, 8mm – 1.25	0978.00	1
65	Key, 5mm x 5mm x75mm	1011.00	1
66	Shaft	1012.00	1
67	Washer	1013.00	2
68	Worm Gear	1014.00	2
69	Lack Washer, 10mm	0963.00	4
70	Hex Nut 10mm	1016.00	4
71	Motor Mount Plate	1017.00	1
72	Hex Head Bolt, 10mm – 1.5	1018.00	4
73	Bearing Dust Deflector	1019.00	1
74	Thrust bearing #51104	1020.00	1
75	Height Adj. Shaft	1021.00	1
76	Snap Ring R28	1022.00	1
77	Rear Trunion Bracket	1023.00	1
78	Hex Nut, 10mm	1016.00	4
80	Motor Pulley	1026.00	1
81	Setscrew, 8mm – 1.25 x 8	0889.00	1
82	'V' Belt	4LZ90	3
83	Arbor Extension	1028.00	1
84	Setscrew Wrench, 8mm	0889.00	1
85	Spanner Wrench	1032.00	1
86	Blade	1036.00	1
**	Setscrew Wrench, 5mm	0150.00	1
**	Setscrew Wrench 3mm	0149.00	1
**	Spanner 12 x 14 Wrench	1034.00	1
**	Spanner 17 x 19 Wrench	1035.00	1
	**Not Shown		

CT073 10" LEFT TILTING ARBOR SAW

CABINET SCHEMATIC ASSEMBLY

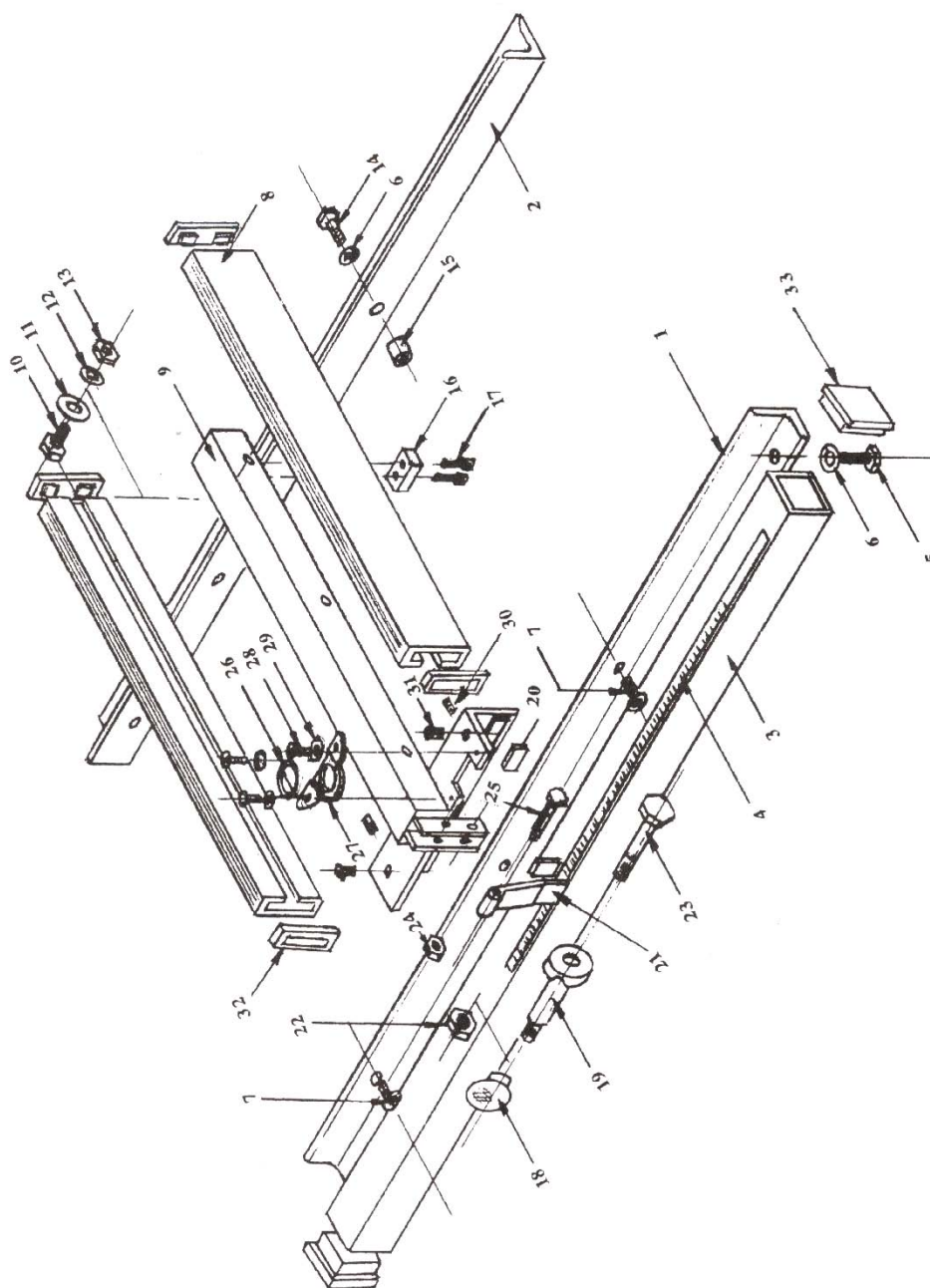


CT073 10" LEFT TILTING ARBOR SAW

CABINET PARTS LIST

Ref. No.	Description	Part No.	Qty
1	Extension table	1037.00	2
2	Hex head Bolt, 10mm –1.5 x 35	0962.00	6
3	Lock Washer 10mm	0963.00	6
6	Blade Insert	1042.00	1
7	Setscrew, 6mm – 1.0 x 8	1043.00	4
8	Table	1044.00	1
9	Base	1045.00	1
10	Indicator Plate	1046.00	1
11	Round head Screw, 4mm 60 x 25	1047.00	2
13	Nut, 4mm – 60	1049.00	2
15	Lock Washer, 10mm	0963.00	4
16	Hex Bolt, 10mm 1.5 x 30	1051.00	4
17	Magnetic Switch	1052.00	1
18	Round Head Screw, 5mm 80x8	0969.00	2
19	Lock Nut, 5mm x 80	1053.00	2
22	Line Cord (Switch to Motor)	1055.00	1
23	Door	1056.00	1
26	Locking Knob	1059.00	1
27	Screw	1061.00	2
28	Crank Handle	1061.00	2
29	Hex Nut	1062.00	2
30	Hand Wheel (Tilt)	1063.00	1
31	Socket Head Bolt 1.25 x 20	1064.00	2
32	Shield Plate	1065.00	1
33	Setscrew 6mm – 1.0 x 6	0964.00	2
34	Grommet	1066.00	1
35	Lock Washer 4mm	1067.00	2
36	Hand Wheel (Height)	1063.00	1
37	Guard Support Rod	1080.00	1
38	Hex Head Bolt, 8mm 1.25 x 25	1081.00	2
39	Washer 8mm	0997.00	1
40	Rear Spreader Support, Upper	1083.00	1
41	Lock Washer 8mm	1084.00	1
42	Rear Spreader Support, Lower	1085.00	1
43	Washer 8mm	0997.00	1
44	Hex Bolt, 8mm 1.25 x 12	0996.00	1
51	Screw	1010.00	2
52	Dado Insert	0999.00	1
53	Motor	6K146	1

CT073 10" LEFT TILTING ARBOR SAW FENCE SCHEMATIC ASSEMBLY



CT073 10" LEFT TILTING ARBOR SAW

FENCE PARTS LIST

No.	Description	Part No.	Qty.
1	Front Rail	2001.00	1
2	Rear Rail	2002.00	1
3	Guide rail	2003.00	1
4	Measure Scale	2004.00	1
5	Hex Screw, M8 x 16mm	2219.00	6
6	Lock Washer	0978.00	10
7	Pan Head Screw M8 x 16mm	2005.00	3
8	Fence	2006.00	1
9	Fence Bracket Body	2007.00	1
10	Hex Head Screw M10 x 30mm	2221.00	3
11	Washer	2223.00	6
12	Lock Washer	0963.00	6
13	Hex Nut	1016.00	6
14	Hex Head Screw M8 x 30mm	2221.00	3
15	Spacer	2009.00	4
16	Plastic Pad	2010.00	1
17	Socket Head Screw M5 x 15mm	2222.00	2
18	Lock Knob	2011.00	1
19	Cam Lever	2012.00	1
20	Pad	2013.00	3
21	Clamp Shoe	2014.00	1
22	Lock Nut	2211.00	1
23	Hex head Bolt 3/8" x 1 3/4"	2212.00	1
24	Lock Nut	2213.00	1
25	Hex Bolt M6 x 45mm	2214.00	1
26	Lens	2015.00	1
27	Lens Bracket	2216.00	1
28	Hex Screw M5 x 8mm	1212.00	3
29	Washer	2215.00	3
30	Setscrew M8 x 12mm	2216.00	2
31	Plastic Screw	2017.00	2
32	Fence End Cover	2018.00	4
33	Rail End Cover	2019.00	2



CRAFTEX 2 YEAR LIMITED WARRANTY

Craftex warrants every product to be free from defects in materials and agrees to correct such defects where applicable. This warranty covers **two years** for parts and 90 days for labour (unless specified otherwise), to the original purchaser from the date of purchase but does not apply to malfunctions arising directly or indirectly from misuse, abuse, improper installation or assembly, negligence, accidents, repairs or alterations or lack of maintenance.

Proof of purchase is necessary.

All warranty claims are subject to inspection of such products or part thereof and Craftex reserves the right to inspect any returned item before a refund or replacement may be issued.

This warranty shall not apply to consumable products such as blades, bits, belts, cutters, chisels, punches etceteras.

Craftex shall in no event be liable for injuries, accidental or otherwise, death to persons or damage to property or for incidental contingent, special or consequential damages arising from the use of our products.

RETURNS, REPAIRS AND REPLACEMENTS

To return, repair, or replace a Craftex product, you must visit the appropriate Busy Bee Tools showroom. Craftex is a brand of equipment that is exclusive to Busy Bee Tools.

For replacement parts directly from Busy Bee Tools, for this machine, please call 1-800-461-BUSY(2879), and have your credit card and part number handy.

- All returned merchandise will be subject to a minimum charge of 15% for re-stocking and handling with the following qualifications.
- Returns must be pre-authorized by us in writing.
- **We do not accept collect shipments.**
- Items returned for warranty purposes must be insured and shipped pre-paid to the nearest warehouse (see locations on inside back cover of this manual).
- Returns must be accompanied with a copy of your original invoice as proof of purchase. Returns must be in an un-used condition and shipped in their original packaging a letter explaining your reason for the return. Incurred shipping and handling charges are not refundable.
- Busy Bee will repair or replace the item at our discretion and subject to our inspection.
- Repaired or replaced items will be returned to you pre-paid by our choice of carriers.
- Busy Bee reserves the right to refuse reimbursement or repairs or replacement if a third party without our prior authorization has carried out repairs to the item.
- Repairs made by Busy Bee are warranted for 30 days on parts and labour.
- Any unforeseen repair charges will be reported to you for acceptance prior to making the repairs.
- The Busy Bee Parts & Service Departments are fully equipped to do repairs on all products purchased from us with the exception of some products that require the return to their authorized repair depots. A Busy Bee representative will provide you with the necessary information to have this done.
- For faster service it is advisable to contact the nearest Busy Bee location for parts availability prior to bringing your product in for repairs.

