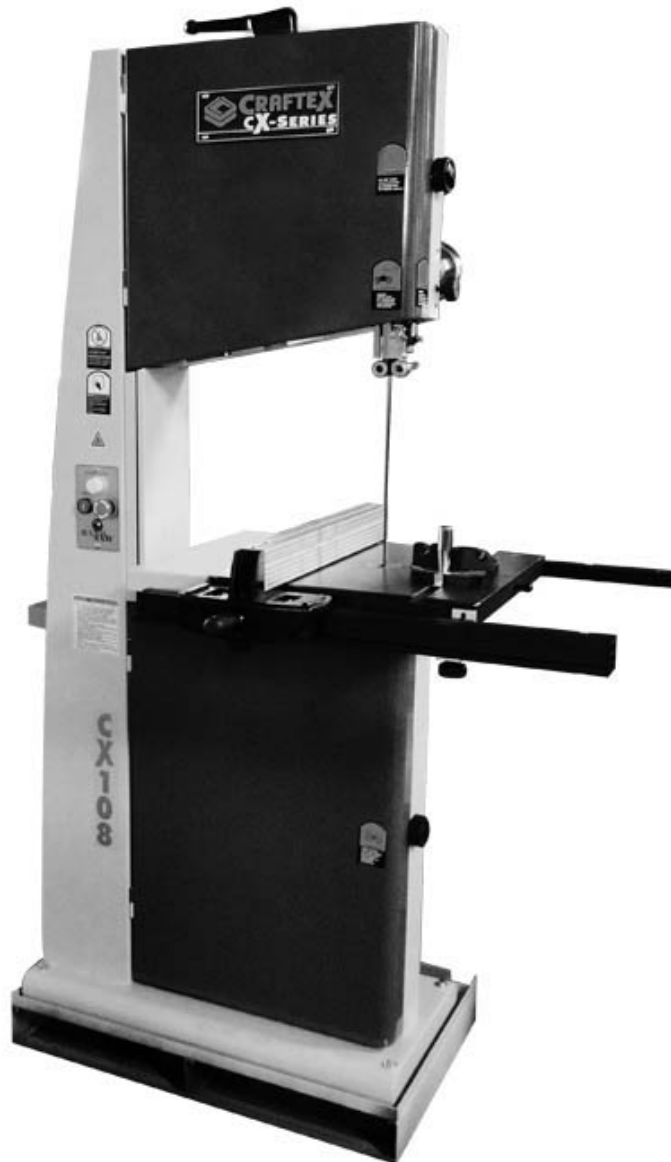




OWNERS MANUAL



CX108 – 18" WOOD BAND SAW



COPYRIGHT © 2012 BY CRAFTEX INDUSTRIES INC.

NO PORTION OF THIS MANUAL MAY BE REPRODUCED WITHOUT
THE WRITTEN CONSENT OF CRAFTEX INDUSTRIES INC.



CX108 WOOD CUTTING BAND SAW

Table Of Contents

General Safety	Page 3
Grounding Instructions	Page 4
Features	Page 5
Diagram	Page 6
Operation	
Blade Release and Tension	Page 7
Upper Bearing Support	Page 7
Lower Bearing Support	Page 8
Cast Iron Wheels and Coplanar	Page 9
Coplanar Con't.	Page 10
Changing Speeds	Page 11
Alignment Procedure	Page 12
Fence	Page 13
Fence Con't.	Page 14
Fence Parts List	Page 15
Fence Schematic	Page 16
Parts List	Page 17
Parts List Con't.	Page 18
Band Saw Schematic	Page 19
Band Saw Schematic Con't.	Page 20
Warranty	Page 21

GENERAL SAFETY INSTRUCTIONS

EXTREME CAUTION SHOULD BE USED IN OPERATING ALL POWER TOOLS. KNOW YOUR POWER TOOL, BE FAMILIAR WITH ITS OPERATION. READ THE OWNER'S MANUAL AND PRACTICE SAFE USAGE PROCEDURES AT ALL TIMES.

- ❑ **CONNECT** your machine **ONLY** to the matched and specified power source.
- ❑ **WEAR SAFETY GLASSES, RESPIRATORS, HEARING PROTECTION and SAFETY SHOES** when operating heavy machinery. **Always wear safety glasses.**
- ❑ **DO NOT** wear loose clothing or jewellery when operating machinery.
- ❑ **A Safe Environment is important.** Keep the area free of dust, dirt and other debris in the immediate vicinity of the machine.
- ❑ **BE ALERT!** Do Not Use prescription or other drugs that may affect your ability or judgement to safely use this machine.
- ❑ **DISCONNECT** the power source when changing tool bits and or any equipment.
- ❑ **NEVER** leave an operating tool unattended.
- ❑ **ALWAYS** keep blades, knives or bits sharp and properly aligned.
- ❑ **ALWAYS** keep all safety guards in place and ensure their proper function.
- ❑ **ALWAYS** make sure that any tools used for adjustments are removed before operating the machine.
- ❑ **ALWAYS** secure your work with the appropriate clamps or vices.
- ❑ **ALWAYS** keep bystanders safely away while operating machinery.
- ❑ **THINK SAFETY. WORK SAFELY.** Never attempt a procedure if it does not feel safe or comfortable.

GROUNDING INSTRUCTIONS

This appliance must be grounded, if it should malfunction or breakdown, grounding provides a path of least resistance for electric current to reduce the risk of electric shock. This appliance is equipped with a cord having equipment-ground conductor and grounding plug. The plug must be inserted into an appropriate outlet that is properly installed and grounded in accordance with all local codes and ordinances.

WARNING – Improper connection of the equipment-grounding conductor can result in a risk of electric shock. Check with a qualified electrician or service person if you are in doubt as to whether the outlet is properly grounded. Do not modify the plug provided with the appliance – if it will not fit the outlet have a proper outlet installed by a qualified electrician.

For grounded, cord – connected appliances:

This appliance is for use on a circuit having a normal rating more than 120volt and is factory – equipped with a specific electric cord and plug to permit connection to a proper electric circuit. Make sure that the appliance is connected to an outlet having the same configuration as the plug. No adapter should be used with this appliance. If the appliance must be reconnected for use on a different circuit, qualified service personnel should make the reconnection.

For permanently connected appliance:

This appliance must be connected to a ground metal, permanent wiring system; or an equipment – grounding conductor must be run with the circuit conductors and connected to the equipment grounding terminal or lead on the appliance.

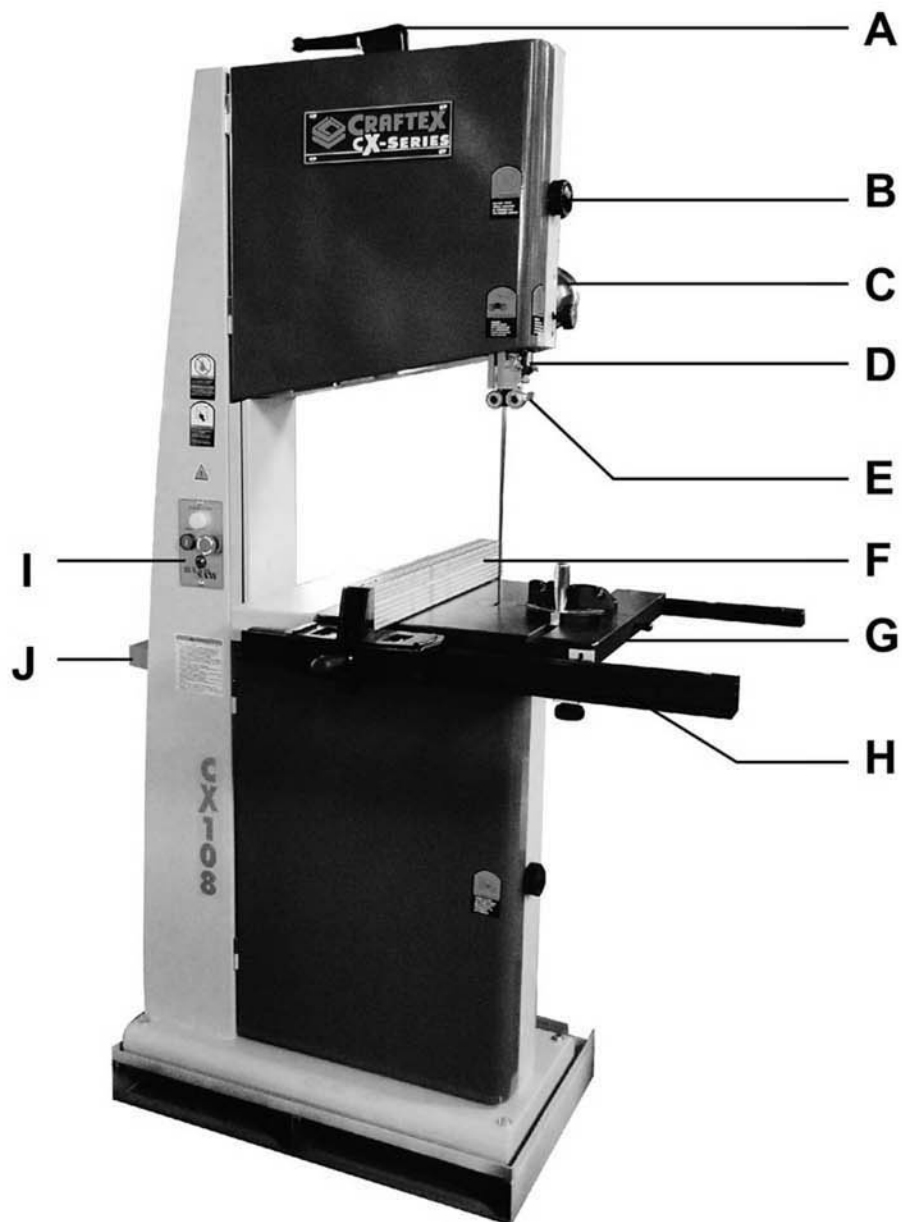
CX108, 18" Wood Band Saw

As part of the growing line of Craftex woodworking equipment, we are proud to offer the CX108 18" Wood Band Saw. The Craftex name guarantees Craft Excellence. By following the instructions and procedures laid out in this owner's manual, you will receive years of excellent service and satisfaction. The CX108 is a professional tool and like all power tools, proper care and safety procedures should be adhered to.

FEATURES

- ❑ Motor – 2HP, 3 Speed, Single Phase 220 Volts.
- ❑ Motor Speed – 3450 RPM.
- ❑ Motor Switch – Magnetic.
- ❑ Blade Speed – 1,480, 2,300 & 3,260 FPM.
- ❑ Fully Balanced Cast Iron Wheels with Coplanar Shim Adjustments.
- ❑ Table Size – 17 3/4" X 17 3/4" with 6" steel wing on the left.
- ❑ Table Material – Precision Ground Cast Iron.
- ❑ Table Height – 37"
- ❑ Table Tilts – 50° left, 10° right.
- ❑ Throat – 17 1/2"
- ❑ Cutting Height – 12" rack & pinion adjustment.
- ❑ Blade Size – 1/4" – 1 1/4" 133" long.
- ❑ Fence – precision aluminum fence with optical cursors.
- ❑ Miter Gauge – 'T' Slot, Included.
- ❑ Overall Height – 74"
- ❑ Gross Weight – 175 kg

CX108 Wood Band Saw



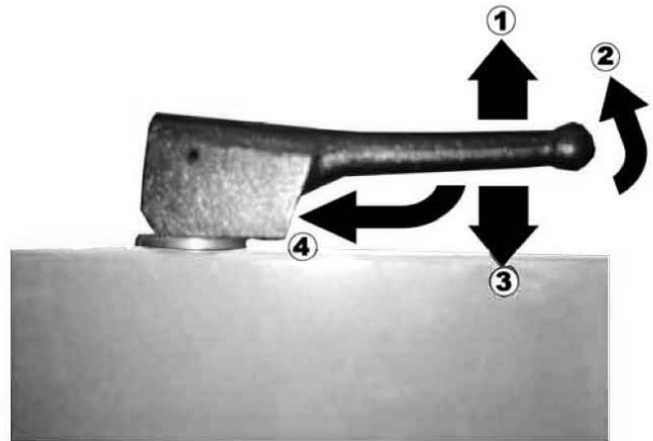
- A. Quick Release Tension Handle**
- B. Door Knob**
- C. Guide Bar Handle**
- D. Guide Bar**
- E. Blade Guide Support (Upper)**
- F. Blade**
- G. Working Table**
- H. Blade Guide Support (Lower)**
- I. Switch**
- J. Tool Tray**

CX108 Wood Band Saw

Operation

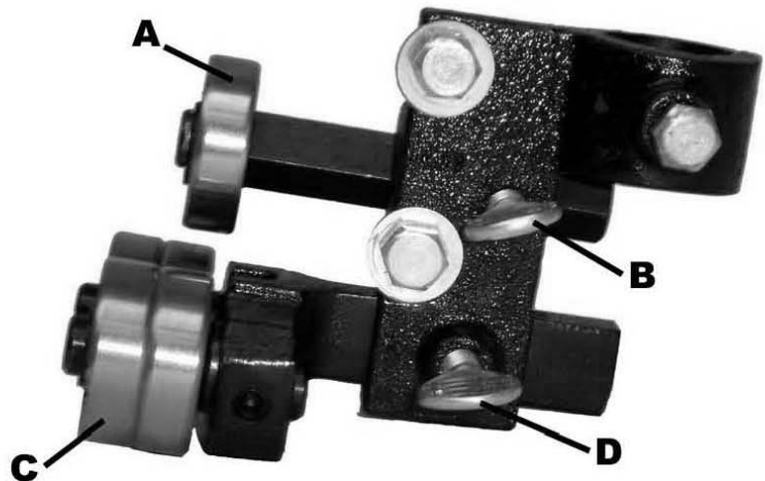
Quick release / Blade tensioning

1. To release the blade tension lift the quick release handle on the top of the band saw. You can now remove and replace your blade.
2. Turn counterclockwise to release blade tension.
3. Turn handle down to tighten blade.
4. Turn clockwise to tighten blade.



Adjusting upper blade support bearing.

The blade support bearing (A) should be adjusted so it almost touches the back of the saw blade when the blade is tracking properly. To adjust, loosen thumbscrew (B) and slide bracket in or out until the adjustment is correct. Tighten lever. The blade guide bearing (C) should be adjusted so they almost touch the side of the blade. The front edge of the guide bearings must be positioned just behind the "gullets" of the saw teeth. To adjust, loosen thumbscrew (D) and slide bearing assembly in or out until the adjustment is correct. Tighten lever. Replace blade guard.

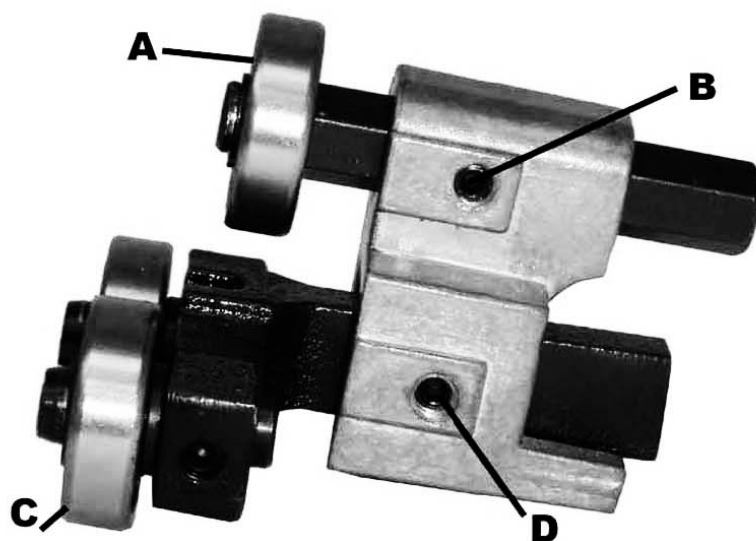


CX108 Wood Band Saw

Operation Cont.

Adjusting lower blade support bearing

The lower bearing adjustments are similar to the upper bearing adjustments. The blade support bearing (A) should be adjusted so it almost touches the back of the saw blade. To adjust, loosen hex screw (B) and slide bracket in or out until the adjustment is correct. Tighten screw. The blade guide bearings (C) should be adjusted so they almost touch the sides of the blade. To adjust, loosen hex screw (D) and slide bearing assembly in or out until the adjustment is correct. Tighten hex screw.



CX108 Wood Band Saw

Operation Cont.

Cast Iron Wheels

The CX108 comes with heavy-duty cast iron wheels for added stability and overall performance.

A coplanar shim adjustment was also added for better alignment of the wheels that allow the blade to run as straight as possible ensuring the straightest of cuts.

This feature will help improve the band saw performance with the wheels working together instead of against each other. The end result will give you less vibration, more power, accuracy and less wandering. This will be noticed most when it comes to re-sawing and making straight cuts with blades larger than 1/4".



CX108 Wood Band Saw Operation Cont.

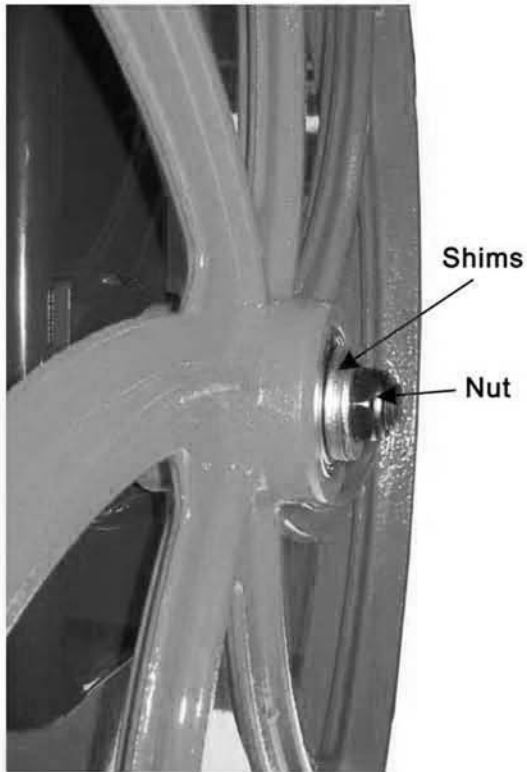


Fig. 1

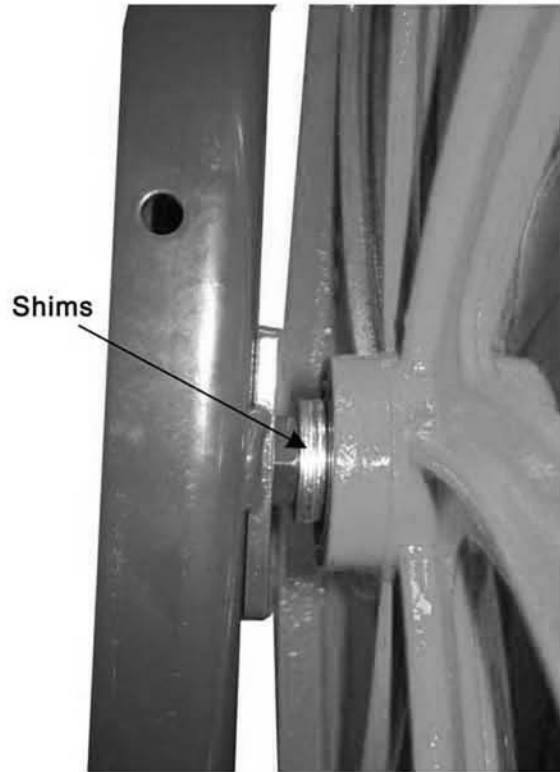


Fig. 2

Coplanar Adjustment

In figure 1 & 2 we can see the shims for adjusting the top wheel in front and behind the cast iron wheel. To move the wheel out remove the nut and shims then remove the wheel. Now you can add shims to the back of the wheel as required. Replace the wheel and any remaining shims and the nut and tighten. To move the wheel in remove the cast iron wheel as mentioned above and remove the shims from behind the wheel, replace the wheel and shims and nut and retighten.

CHANGING SPEEDS for CX108

The motor has a 3-step pulley which will give you the 3 feed-speeds. The belt tension is adjusted by loosening the nut “A” (see **figure-1**), and the motor bracket lock “B” under the motor (see **figure-1**) and moving the motor slightly.

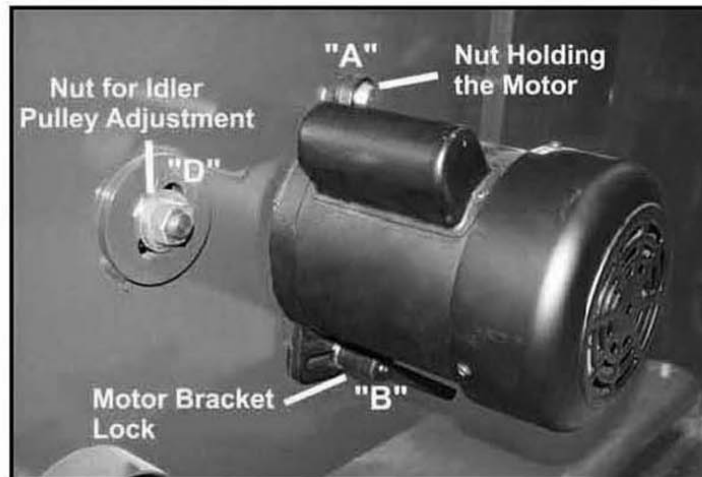


Figure-1 Shows the Nuts and the Motor Bracket Lock

Idler pulley is a 4-step pulley “C” (see **figure-2**). The 3 steps are to line up with the motor pulley for the 3 feed-speeds and the 4th one is to drive the pulley behind the wheel. The idler pulley can be adjusted by loosening the nut “D” (see **figure-1**) at the back of the machine and adjusting it.

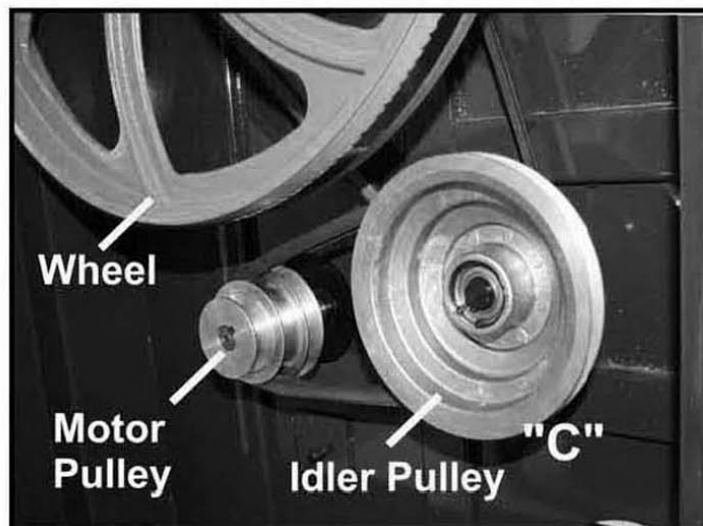


Figure- 2 Shows the Pulleys and the Wheel Inside the Cabinet

CX108 Wood Band Saw

Operation Cont.

Alignment Procedure

This procedure should only take a couple of minutes for you to accomplish. The first step is to check and see if the saw is already aligned.

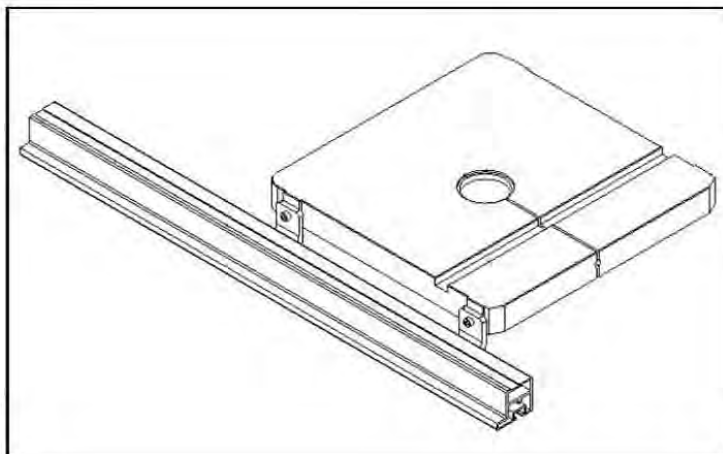
1. Take a blade 3/4" or larger and install onto the band saw. The reason for this is that smaller blades are more flexible than the larger ones. At this point make sure you have the correct tension for the blade your are using before you proceed.
2. With the aid of a straight edge, check to see if the wheels are parallel with each other. Place the straight edge in the middle of the wheels, if it touches the tops and bottoms both wheels then they are parallel and in line. You may have to angle the top wheel to get them parallel. At this point if you have determined that the wheels are in alignment then you may use the saw without any further adjustments. If the straight edge does not touch the wheels at all points then you will have to make an adjustment.
3. When you have to make this adjustment you must measure how far the wheel must be moved to achieve coplanar alignment. The measurement must be taking at two points, of the same wheel, the top and the bottom of the wheel. This measurement must be the same at both points where the straight edge is not touching. If the measurement is not the same at both points then angle the top wheel until both measurements are exactly the same. Place your straight edge in the middle of the wheels and with a ruler measure the distance from the wheel to the straight edge at both points, this will tell you how much is required to align the wheel.
4. Remove the nut, washer and shims from the shaft. Now remove the wheel to reveal the shims behind the wheel. With the measurement you have at this point you will either have to add or remove the shims. Once completed replace the wheel and any shims the washer and nut and tighten. (Refer to page 10 Fig.1 & 2).
5. Repeat steps 1 & 2 to make sure you have made the correct adjustments to the band saw.

CX108 18" Wood Band Saw

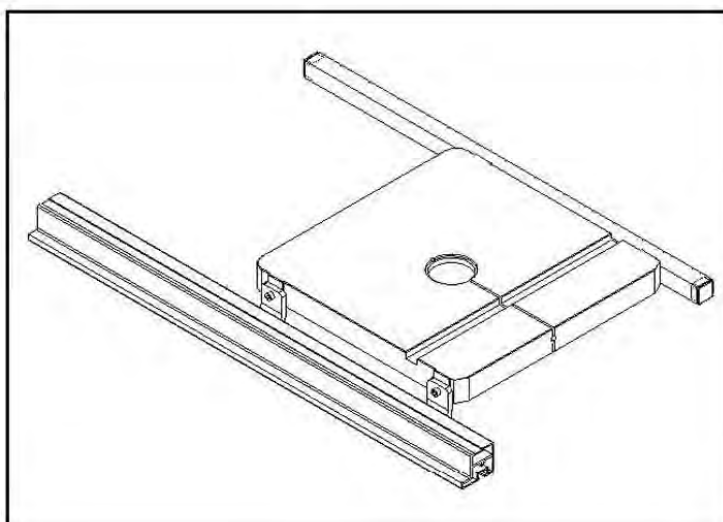
Fence Installation

The CX108 comes complete with a precision aluminum fence with optical cursors for superior accuracy. Select the fence components and fasteners from the parts.

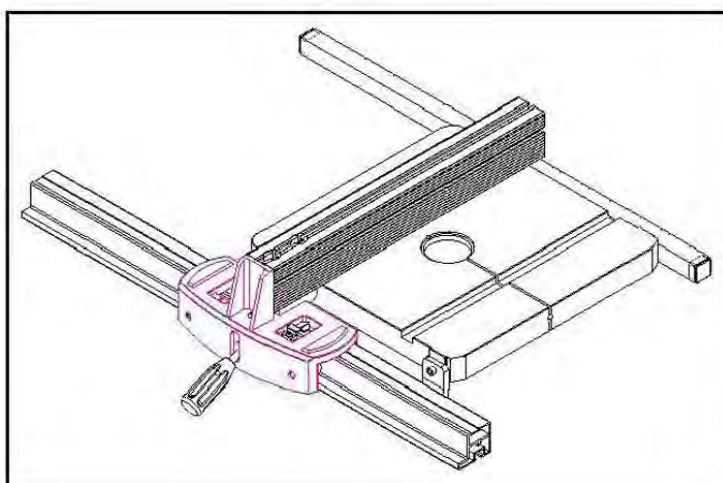
1. Install front fence rail brackets to the front edge of the band saw table as indicated with the fasteners provided. Attach the front rip fence to the fence rails provided.



2. Attach the rear rip fence rail to the rear of the band saw table with the fasteners provided.

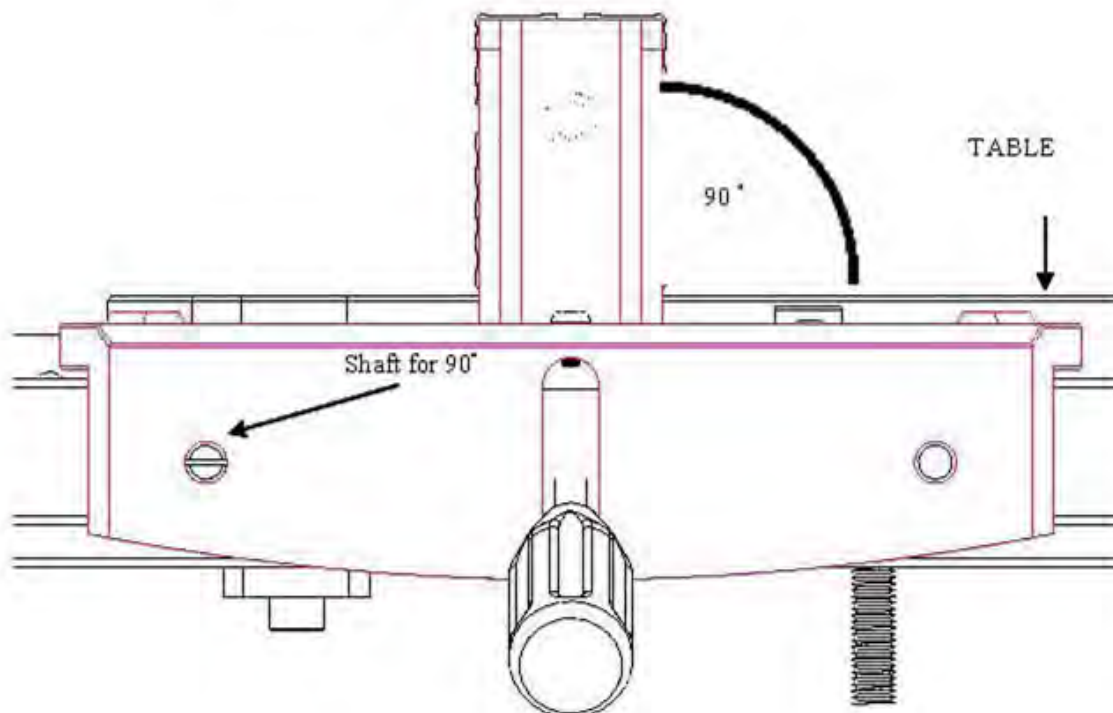
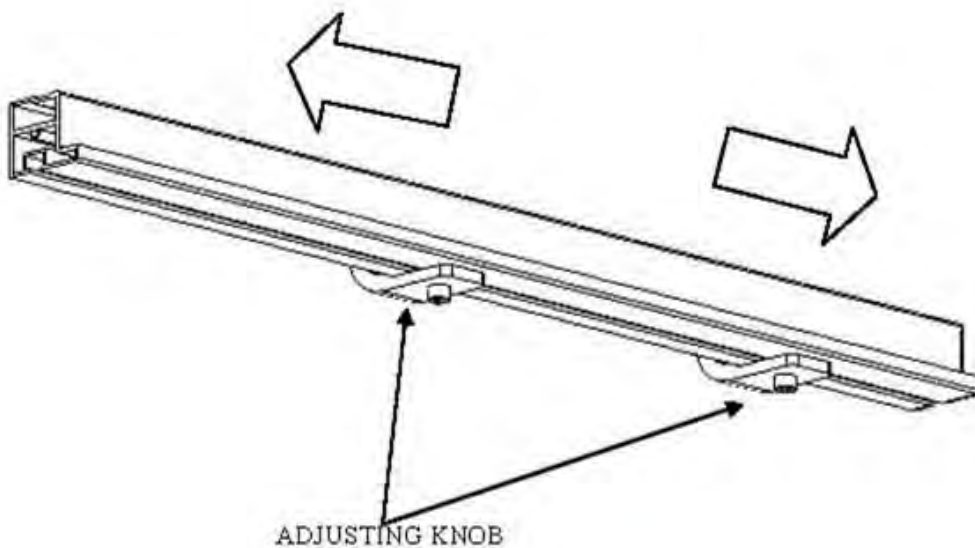


3. Attach the adhesive-backed tape measure to the top of the rip fence rail. With the rip fence-locking handle in the raised position, slide the rip fence onto the front rail.



CX108 18" Wood Band Saw

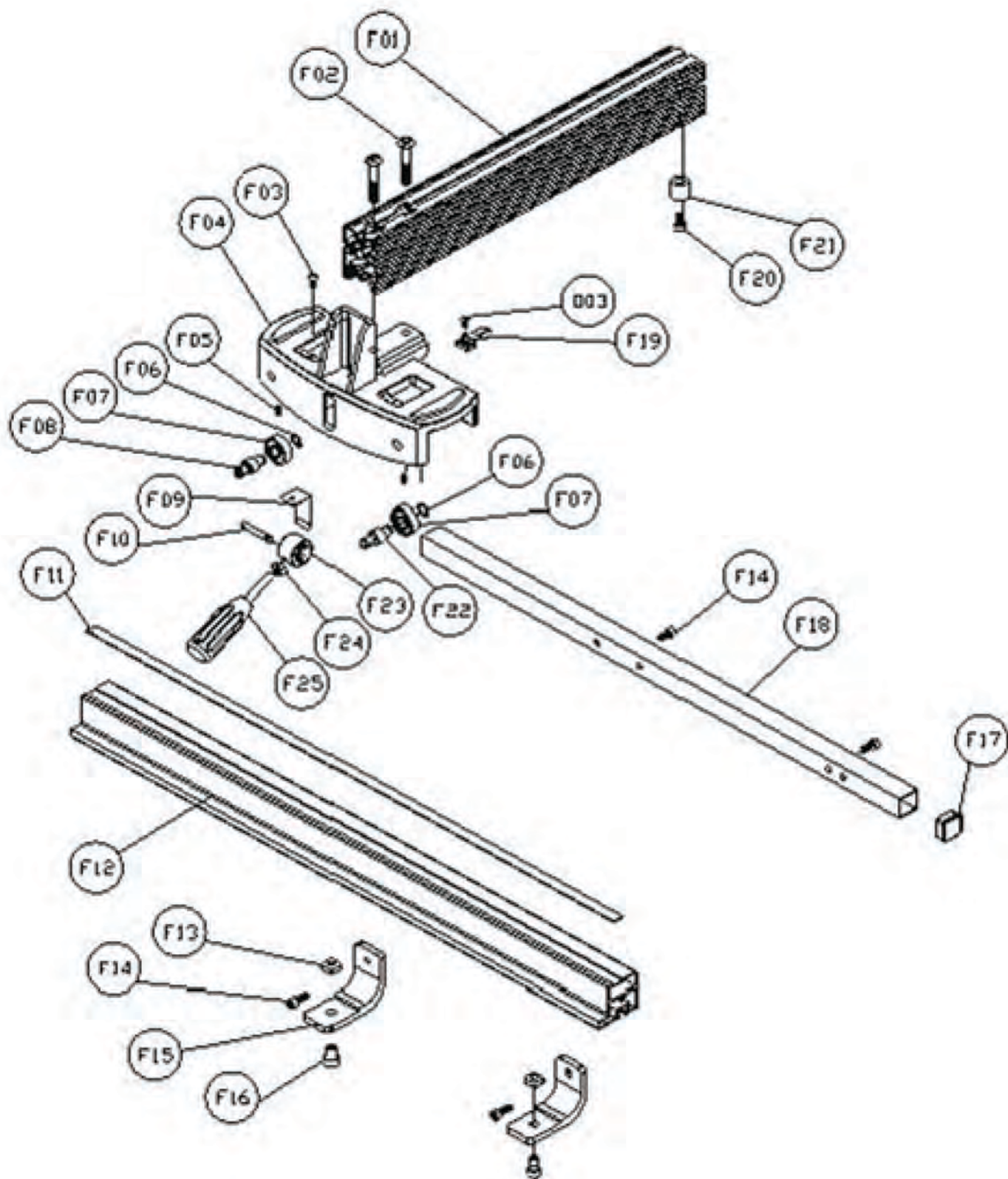
ADJUSTMENTS



CX108 PARTS LIST

NO.	DESCRIPTION	Q'TY
F01	Fence Body	1
F02	Socket Head Screw 10*25	2
F03	Socket Head Screw 5*10	2
F04	Fence Base	1
F05	Set Screw 1/4*1/4	2
F06	C-Ring S10	2
F07	Bearing 6200	2
F08	Eccentric Shaft	4
F09	Plate	1
F10	Pin 6*43	1
F11	Scale	1
F12	Large Fence Rail	1
F13	Square Nut	2
F14	CAP Screw	4
F15	L Type Plate	2
F16	Knob 5/16"*5/8"	2
F17	Small Rail Cap	2
F18	Small Fence Rail	1
F19	Pointer	1
F20	CAP Screw	1
F21	Runner	1
F22	Bearing Shaft	1
F23	Lock Mechanism	1
F24	Nut 8mm	1
F25	Handle	1

CX108 PARTS DIAGRAM



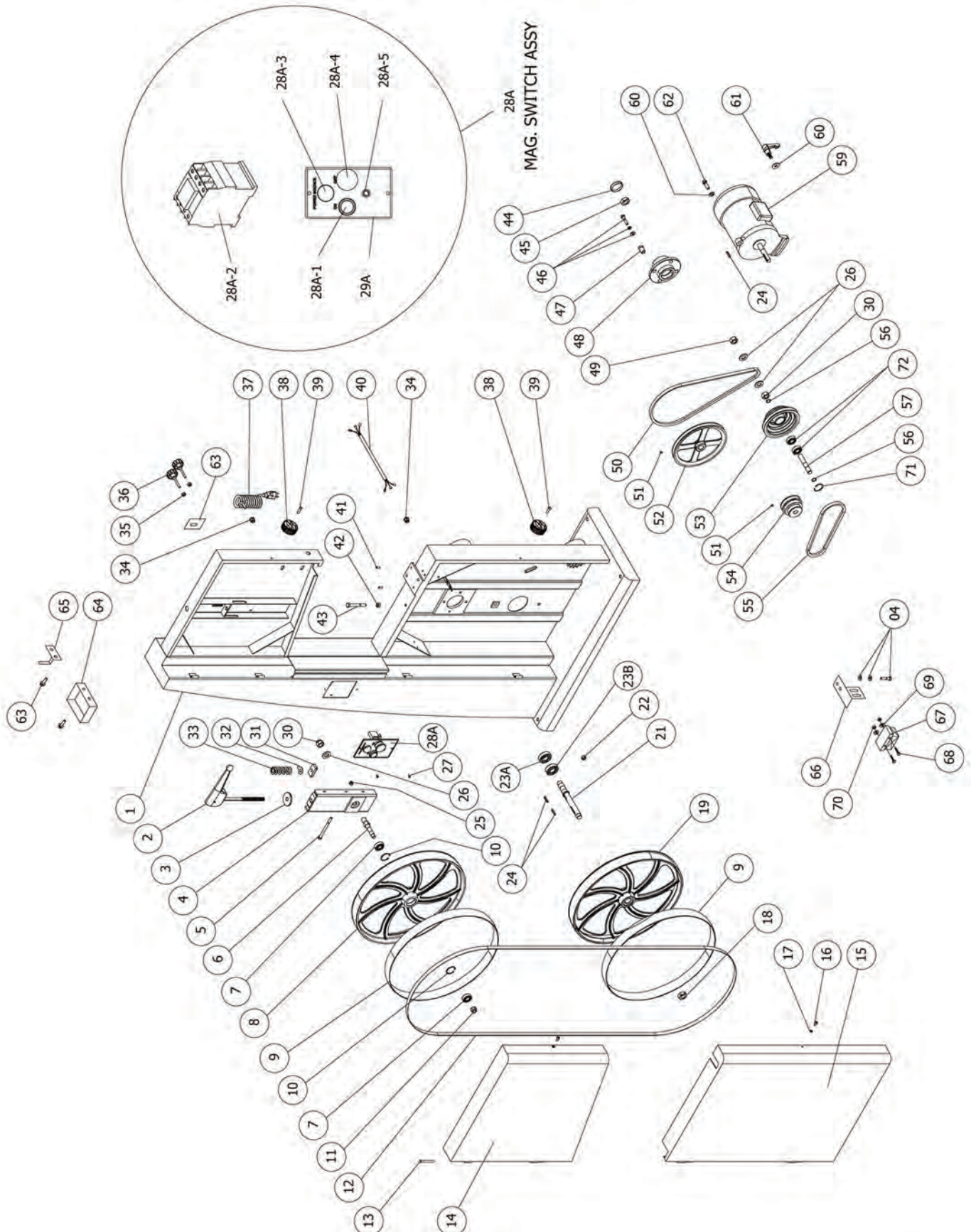
CX108 PARTS LIST

PART	DESCRIPTION	PART	DESCRIPTION
1	BODY	35	5/16" HEX NUT
2	HANDLE	36	5/16*2" KNOB
3	WASHER	37	POWER CORD
4	UPPER WHEEL BRACKET	38	GUARD LOCKING KNOB
5	M8*118 SCREW	39	1/4"-3/4" SOC HD SCREW
6	UPPER WHEEL SHAFT	40	MOTOR CORD
7	BEARING	41	6MM PIN
8	UPPER WHEEL	42	3/8" HEX NUT
9	TIRE	43	3/8"-4" SCREW
10	C-RING R40	44	COVER
11	1/2" HEX NUT	45	3/4" HEX NUT -R
12	BLADE	46	5/16"*1 1/2" SCREW
13	PIN	47	ADJUSTING SCREW
14	UPPER WHEEL GUARD	48	BEARING HOUSING
15	LOWER GUARD	50	V-BELT A41
16	1/4"-3/8" SCREW	51	1/4"-1/4" SET SCREW
17	1/4" LOCK WASHER	52	PULLEY
18	3/4" HEX NUT-L	53	PULLEY
19	LOWER WHEEL	54	MOTOR PULLEY
20	x	55	V-BELT A25
21	SHAFT	56	C-RING S15
22	3/8" HEX NUT	57	SHAFT
23A	BEARING 6205	55	V-BELT A25
23B	BEARING 6005	56	C-RING S15
24	KEY 5x5*40	57	SHAFT
25	M8 NUT	58	x
26	5/8" WASHER	59	MOTOR
27	3/16"-1/2" PAN HD SCREW	60	3/8" WASHER
28A	MAG SWITCH ASSY	61	3/8*1 1/4" KNOB
28A-1	ON SWITCH	62	3/8"-2 1/2" SCREW
28A-2	CONTACTOR	63	1/4"*3/4" HEX BOLT
28A-3	POWER LIGHT	64	BOX
28A-4	STOP SWITCH	65	HOLDER
28A-5	RESET SWITCH	66	BRUSH BASE
29A	SWITCH PLATE	67	BRUSH
30	5/8" NUT	68	3/16*1 1/2" PHILLIPS SCREW
31	SQUARE NUT	69	3/16" WASHER
32	POINTER	70	3/16"HEX NUT
33	SPRING	71	C-RING R35
34	RETAINER	72	BEARING 6202

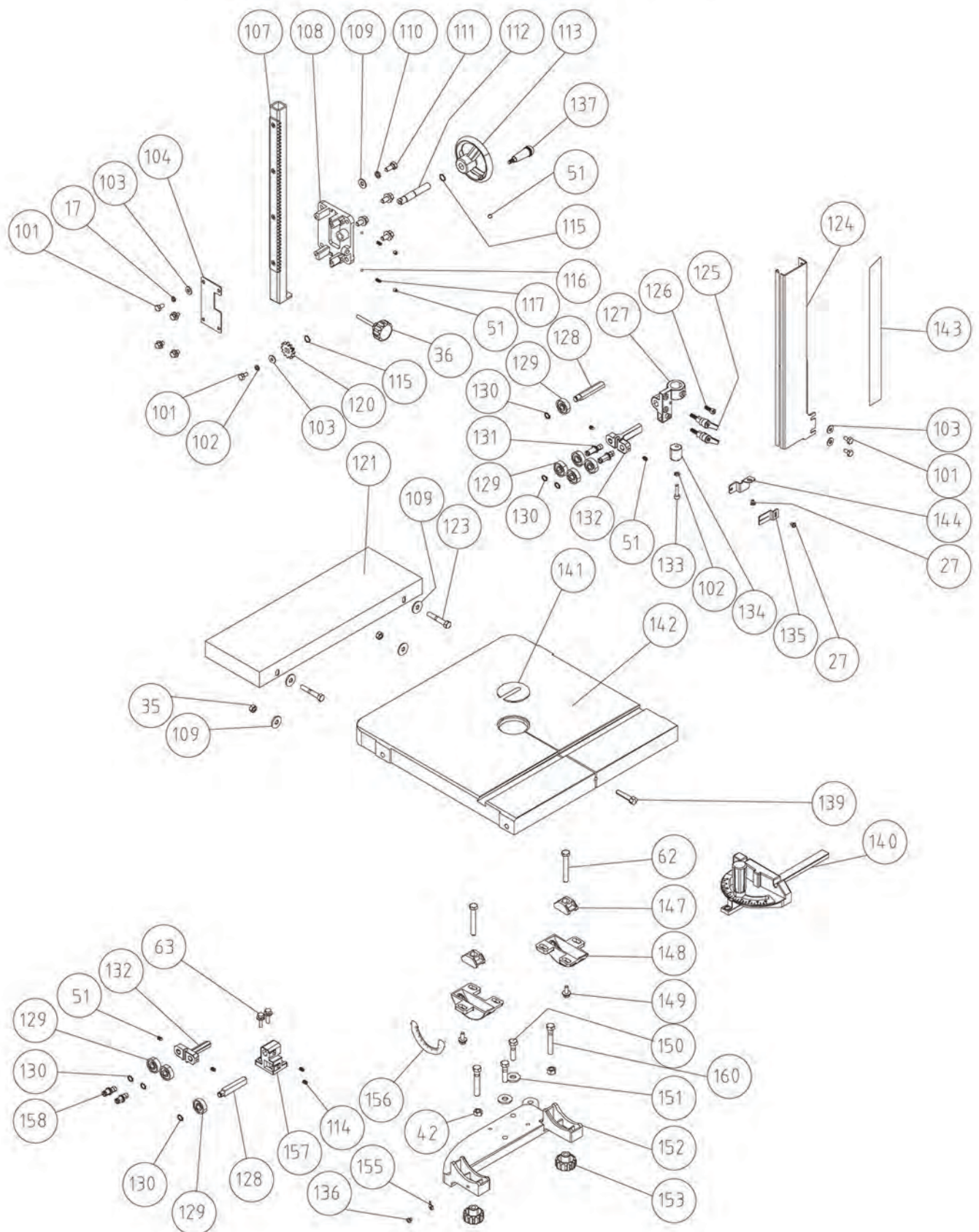
CX108 PARTS LIST

PART	DESCRIPTION	PART	DESCRIPTION
101	1/4"-3/8" SCREW	131	GUIDE SHAFT(L)
102	x	132	SUPPORT
103	1/4" WASHER	133	1/4"-7/8" CAP SCREW
104	GUIDE BAR COVER	134	GUIDE POST
105	x	135	POINTER
106	x	136	x
107	GUIDE BAR	137	1/4"-3/4" CAP SCREW
108	BRACKET	138	x
109	5/16" WASHER	139	PIN
110	5/16" LOCK WASHER	140	GAUGE
111	5/16"-3/4" SCREW	141	TABLE INSERT
112	SHAFT	142	TABLE
113	HAND WHEEL	143	SCALE
114	x	144	POINTER PLATE
115	C-RING S13	145	x
116	BALL	146	x
117	SPRING	147	CLAMP SHOE
118	x	148	TRUNNION
119	x	149	5/16"*3/4" SCREW
120	GEAR	150	3/8"-2" SCREW
121	EXTENSION TABLE	151	x
122	x	152	TABLE BRACKET
123	5/16"-2" SCREW	153	3/8" LOCK KNOB
124	BLADE COVER	154	x
125	THUMB SCREW	155	POINTER
126	1/4"-1/2" SCREW	156	SCALE
127	BRACKET	157	BRACKET
128	BEARING SUPPORT BRACKET	158	GUIDE SHAFT(S)
129	BEARING 6200	159	x
130	C-RING S10	160	3/8"*1 1/2" SCREW
		164	x

CX108 PARTS DIAGRAM



CX108 PARTS DIAGRAM





WARRANTY

CRAFTEX 3 YEARS LIMITED WARRANTY

Craftex warrants every product to be free from defects in materials and agrees to correct such defects where applicable. This warranty covers **three years** for parts and 90 days for labour (unless specified otherwise), to the original purchaser from the date of purchase but does not apply to malfunctions arising directly or indirectly from misuse, abuse, improper installation or assembly, negligence, accidents, repairs or alterations or lack of maintenance.

Proof of purchase is necessary.

All warranty claims are subject to inspection of such products or part thereof and Craftex reserves the right to inspect any returned item before a refund or replacement may be issued.

This warranty shall not apply to consumable products such as blades, bits, belts, cutters, chisels, punches etceteras.

Craftex shall in no event be liable for injuries, accidental or otherwise, death to persons or damage to property or for incidental contingent, special or consequential damages arising from the use of our products.

RETURNS, REPAIRS AND REPLACEMENTS

To return, repair, or replace a Craftex product, you must visit the appropriate Busy Bee Tools showroom or call 1-800-461-BUSY. Craftex is a brand of equipment that is exclusive to Busy Bee Tools.

For replacement parts directly from Busy Bee Tools, for this machine, please call 1-800-461-BUSY (2879), and have your credit card and part number handy.

- All returned merchandise will be subject to a minimum charge of 15% for re-stocking and handling with the following qualifications.
- Returns must be pre-authorized by us in writing.
- We do not accept *collect* shipments.
- Items returned for warranty purposes must be insured and shipped pre-paid to the nearest warehouse
- Returns must be accompanied with a copy of your original invoice as proof of purchase. Returns must be in an un-used condition and shipped in their original packaging a letter explaining your reason for the return. Incurred shipping and handling charges are not refundable.
- Busy Bee will repair or replace the item at our discretion and subject to our inspection.
- Repaired or replaced items will be returned to you pre-paid by our choice of carriers.
- Busy Bee reserves the right to refuse reimbursement or repairs or replacement if a third party without our prior authorization has carried out repairs to the item.
- Repairs made by Busy Bee are warranted for 30 days on parts and labour.
- Any unforeseen repair charges will be reported to you for acceptance prior to making the repairs.
- The Busy Bee Parts & Service Departments are fully equipped to do repairs on all products purchased from us with the exception of some products that require the return to their authorized repair depots. A Busy Bee representative will provide you with the necessary information to have this done.
- For faster service it is advisable to contact the nearest Busy Bee location for parts availability prior to bringing your product in for repairs.