



CX402
3-HP DUST COLLECTOR
with CANISTERS
User Manual



TABLE OF CONTENTS

General Safety Instructions.....	3
Specific Safety Instructions.....	4
CX402 Features.....	5
Physical Features	6
Set Up.....	7
Un-Packing	7
Proper Grounding	8
Assembly	9
Test Run	11
Optional Grounding Kit for CX402.....	12
Maintenance	13
Emptying the Collection Bag.....	13
Cleaning the Canister	13
CX402 Parts Breakdown.....	14
CX402 Parts List.....	15
Warranty	17

GENERAL SAFETY INSTRUCTIONS FOR MACHINES

Extreme caution should be used when operating all power tools. Know your power tool, be familiar with its operation, read through the user manual and practice safe usage procedures at all times.

- ❖ **ALWAYS** read and understand the user manual before operating the machine.
- ❖ **CONNECT** your machine ONLY to the matched and specific power source.
- ❖ **ALWAYS** wear safety glasses respirators, hearing protection and safety shoes, when operating your machine.
- ❖ **DO NOT** wear loose clothing or jewelry when operating your machine.
- ❖ **A SAFE ENVIRONMENT** is important. Keep the area free of dust, dirt and other debris in the immediate vicinity of your machine.
- ❖ **BE ALERT! DO NOT** use prescription or other drugs that may affect your ability or judgment to safely use your machine.
- ❖ **DISCONNECT** the power source when changing drill bits, hollow chisels, router bits, shaper heads, blades, knives or making other adjustments or repairs.
- ❖ **NEVER** leave a tool unattended while it is in operation.
- ❖ **NEVER** reach over the table when the tool is in operation.
- ❖ **ALWAYS** keep blades, knives and bits sharpened and properly aligned.
- ❖ **ALL OPERATIONS MUST BE** performed with the guards in place to ensure safety.
- ❖ **ALWAYS** use push sticks and feather boards to safely feed your work through the machine and clamp the work-piece (when necessary) to prevent the work-piece from any unexpected movement.
- ❖ **ALWAYS** make sure that any tools used for adjustments are removed before operating the machine.
- ❖ **ALWAYS** keep the bystanders safely away while the machine is in operation.
- ❖ **NEVER** attempt to remove jammed cutoff pieces until the saw blade has come to a full stop.

CX402 – DUST COLLECTOR

SPECIFIC SAFETY INSTRUCTIONS

- ❖ **READ** and follow all the instructions and safety precautions in the user manual before setup or use.
- ❖ **THIS DUST COLLECTOR** is designed for wood dust only. It is not to be used for other materials such as liquids or metal scraps but not limited to, nails and fillings. It is also not intended to collect large pieces that will not pass through the impeller
- ❖ **DO NOT** place your hands or tools near the open inlet while the dust collector is running. Turn the machine OFF to repair, service, or inspection (such as clogging).
- ❖ **DO NOT** operate the dust collector in areas exposed to ignition sources such as pilot lights or open flame etc...Suspended particulates may be a source of explosion.
- ❖ **ALWAYS** wear personal protective devices such as masks, respirators, and safety glasses when emptying dust from the collection bags. Proper disposal method should be followed.
- ❖ **MAKE SURE** the collection bags and the canisters are securely fastened to the collector body before every use.
- ❖ **METALLIC OBJECTS** that strike the impeller may produce a spark which can smolder in wood dust for a long period of time before fire or flame is detected. While operating the dust collector, if metal contacts metal, immediately turn the switch to the OFF position and unplug the cord from the outlet, allowing the impeller to come to a complete stop. Empty the dust into an approved air tight metal container and remove all metal objects from dust prior to resuming operation.
- ❖ **CERTAIN WOODS** maybe an irritant or cause an allergic reaction. It is good to know what type of wood dust you will be exposed to, in case there is an allergic reaction. Always wear approved personal safety equipments.
- ❖ **ALWAYS** turn OFF the dust collector and disconnect power, allowing the impeller to come to a complete stop before servicing the dust collector or connected system.
- ❖ **MAKE SURE** you have read and understood all the safety instructions in the manual and you are familiar with your dust collector, before operating it. If you fail to do so, serious injury could occur.

WARNING

The safety instructions given above can not be complete because the environment in every shop is different. Always consider safety first as it applies to your individual working conditions.



CX402 – DUST COLLECTOR

FEATURES

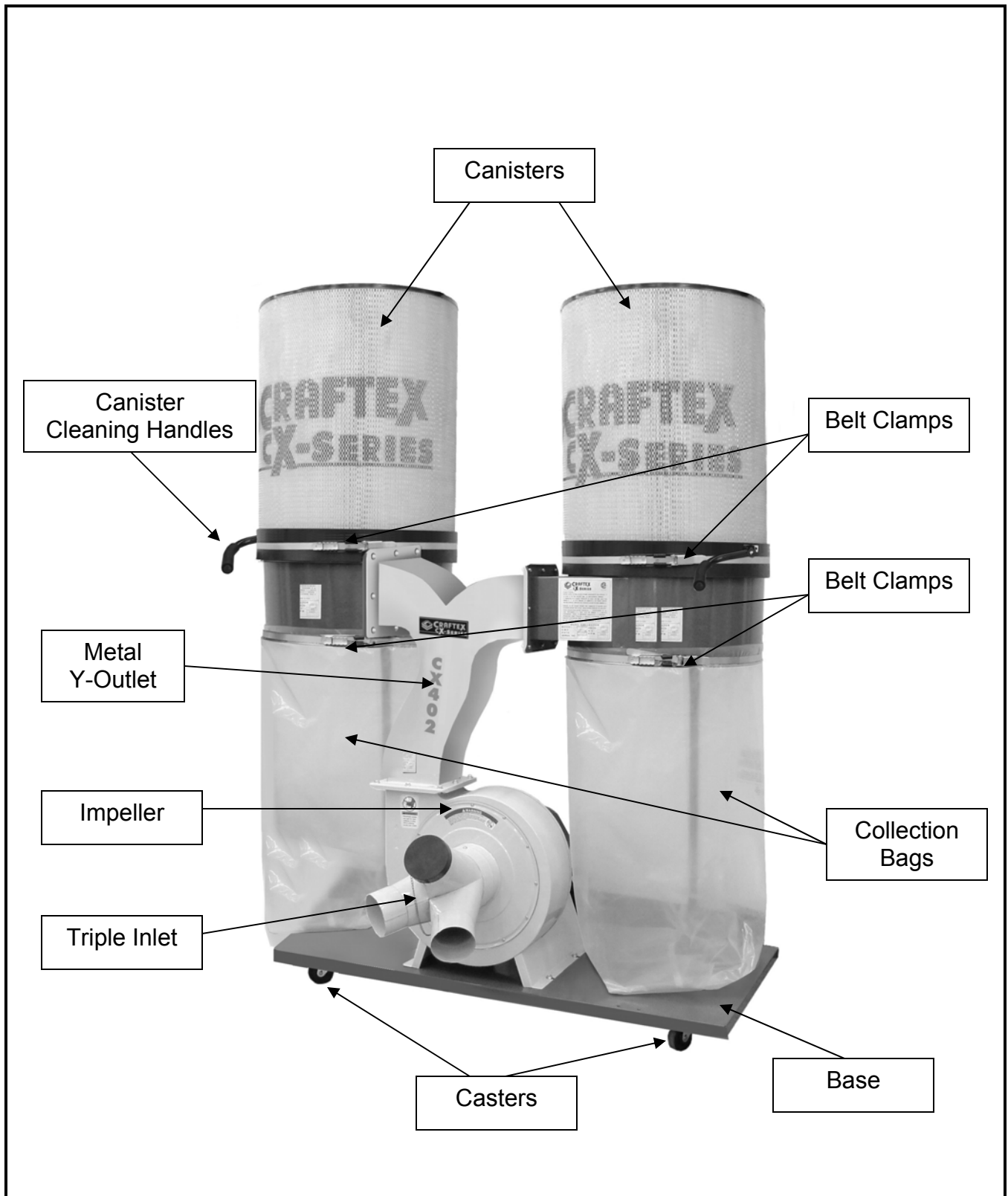
MODEL CX402 - 3-HP DUST COLLECTOR WITH CANISTERS

As part of the growing line of Craftex woodworking equipment, we are proud to offer the CX402 a 3-Hp Dust Collector with Canisters. The Craftex name guarantees Craft Excellence. By following the instructions and procedures laid out in this user manual, you will receive years of excellent service and satisfaction. The CX402 is a professional tool and like all power tools, proper care and safety procedures should be adhered to.

- ❖ Motor 3-HP, 220-Volts, 60-Hz, Single Phase
- ❖ Amp 18 Amps
- ❖ Motor Speed 3450 RPM
- ❖ Suction Capacity..... 2200 CFM
- ❖ Static Pressure 15.5" H₂O
- ❖ Impeller Size..... 12-3/4"
- ❖ Inlet Size 6" x 4" x 3"
- ❖ Dimension of the Base 39" x 31-1/2" x 69"
- ❖ Weight 61 Kg
- ❖ Warranty 3 Years

CX402 3-HP DUST COLLECTOR

PHYSICAL FEATURES



UNPACKING

The machine is properly packaged and shipped completely in crates for safe transportation. When unpacking, carefully inspect the crates and ensure that nothing has been damaged during transit. Open the crates and check that the machine and the parts are in good condition.

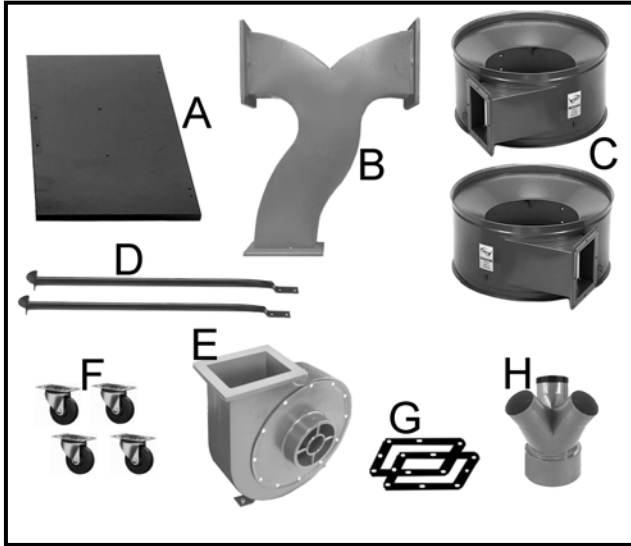


Figure-1 Inventory

List of Contents	Qty
A. Base	1
B. Y-Outlet.....	1
C. Collectors	2
D. Collector Supports.....	2
E. Motor / Impeller Assembly	1
F. Casters.....	4
G. Gaskets	3
H. Triple Inlet	1

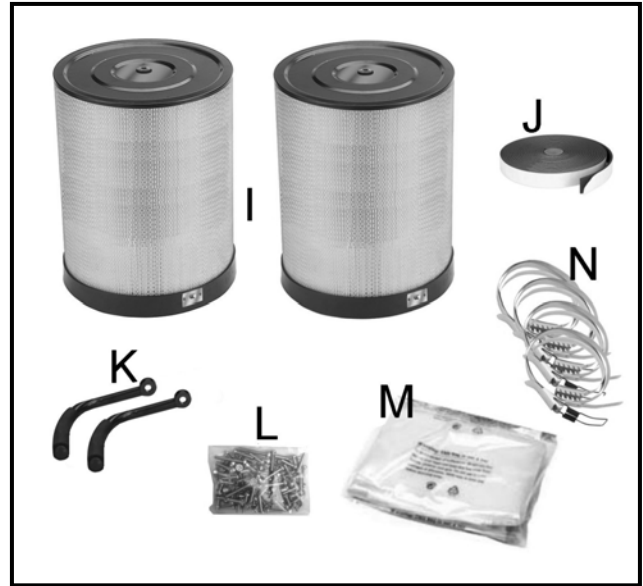


Figure-2 Inventory

List of Contents	Qty
I. Canisters.....	2
J. Adhesive Foam	4
K. Canister Handles	2
L. Mounting Hardware Bag	1
M. Collection Bags.....	2
N. Metal Clamps.....	4

NOTE: While doing inventory, if you can not find any part, check if the part is already installed on the machine. Some of the parts come assembled with the machine because of shipping purposes.

PROPER GROUNDING

Grounding provides a path of least resistance for electric current to reduce the risk of electric shock.

CX402 is equipped with a 220-volts, single phase motor which features a 3-conductor cord and a 3-prong grounded plug to fit a grounded type receptacle. Do not remove the grounding prong to fit it into a 2-pronged outlet. Always check with a qualified electrician if you are in doubt.

Make sure the cord is plugged into a properly installed and grounded power outlet.

To prevent electrical hazards, have a qualified electrician ensure that the line is properly wired.

This machine is for use on a normal 220-volt circuit and is factory-equipped with a specific electric cord and plug to permit connection to a proper electric circuit. Make sure that the appliance is connected to an outlet having the same configuration as the plug. If an adaptor plug is used, it must be attached to the metal screw of the receptacle.

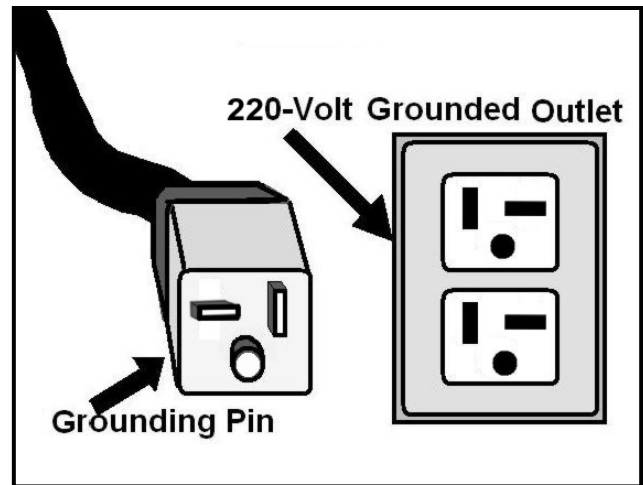


Figure-3 220-Volts outlet for CX402

It is strongly recommended not to use extension cords with your CX402. Always try to position your machine close to the power source so that you do not need to use extension cords.

In case if you really find it necessary to use an extension cord, make sure the extension cord does not exceed 50-feet in length and the cord is 14-gauge to prevent motor damage.

WARNING

Improper connection of the equipment-grounding conductor can result in a risk of electric shock. Check with a qualified electrician if you are in doubt as to whether the outlet is properly grounded.

ASSEMBLY

Take the base and turn it upside down and attach the four casters to the base plate as shown in figure-4. Select the appropriate nuts provided and tighten securely.



Figure-4 Installing the casters

Turn the base to upright and position the motor/impeller assembly on it by aligning the holes on the assembly with the holes on the base. Secure the motor/impeller assembly to the base using nuts, bolts, and washers provided.

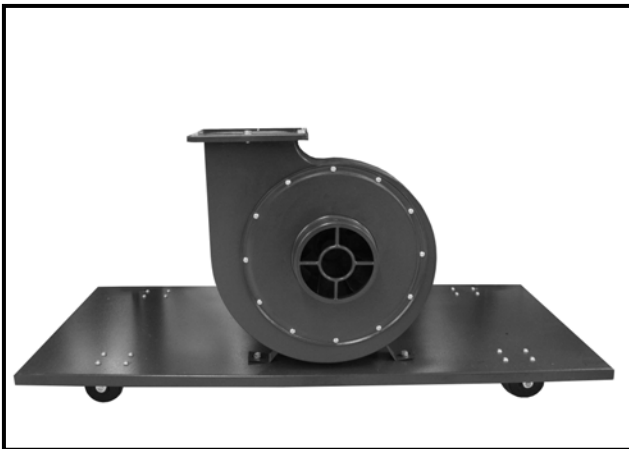


Figure-5 Motor/Impeller assembly mounted

Place the rubber gasket on the flange opening of the motor/impeller assembly as shown in figure-6.

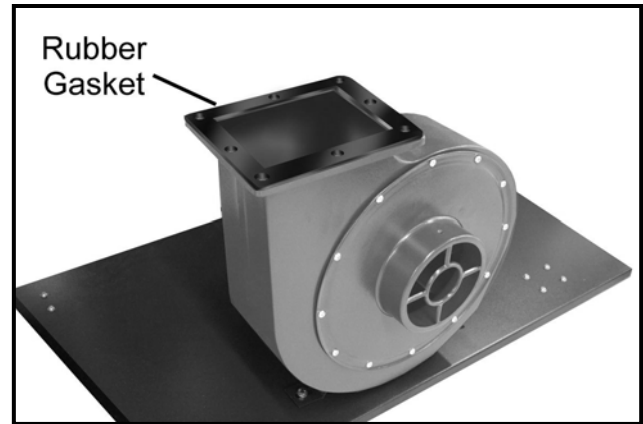


Figure-6 Rubber gasket

Take the Y-outlet and carefully mount it on top of the flange opening as shown in figure-7 and secure it using nuts, bolts and washer provided.

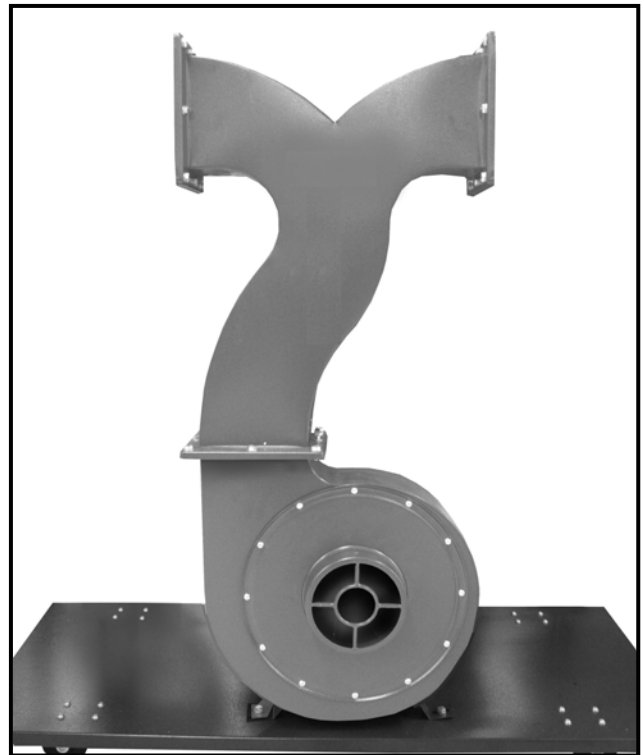


Figure-7 Y-outlet installed

Place the gasket on the opening of the collector and attach the collector to the Y-inlet as shown in figure-8. Secure it using screws provided.

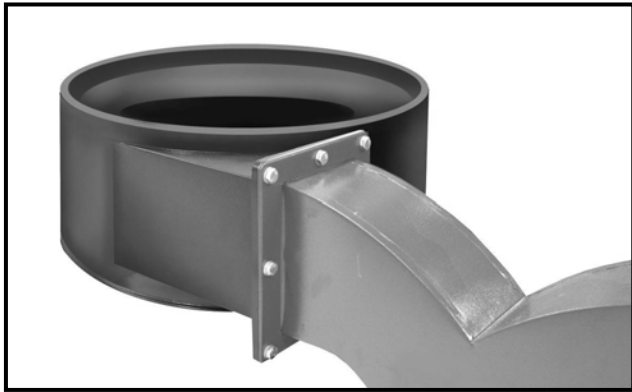


Figure-8 Installing the collector

Install the second collector in the same manner.

Attach the collector supports with one end to the collector and the other end to the base and securing using screws provided.



Figure-9 Installing the collector supports

Attach the adhesive foam to the outside top rim of the collectors as shown in figure-10 and trim and excessive foam.



Figure-10 Attaching the adhesive foam

Slide the canister handle onto the shaft on the canister and tighten the screw.



Figure-11 Installing the canister cleaning handle

Install the other canister handle in the same manner.

Place the canister on the top of the collector and position the metal clamp around the canister bottom part. Make sure the canister is sitting evenly on the collector ring and tighten the clamp.



Figure-12 Installing the canister

Attach the adhesive foam to the outside bottom rim of the collectors and trim and excessive foam.

Hook the collector bags to the hooks around the collectors. Use the belt clamps to secure the collection bags around the collectors on the foam strip.



Figure-13 Installing the collection bag

Slide the triple intake over the impeller intake hole and secure it using a screw. See figure-14.

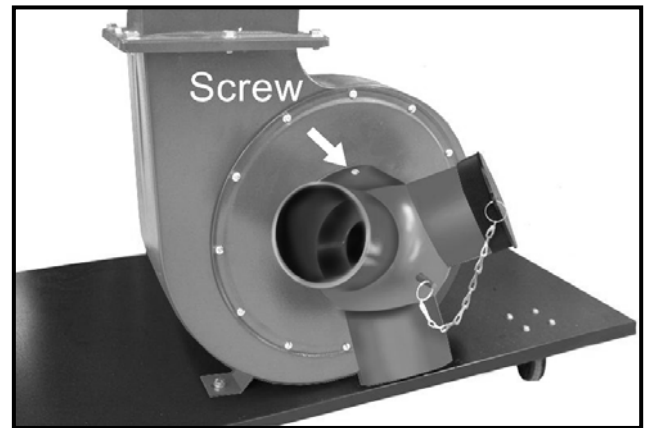


Figure-14 Installing the triple inlet

TEST RUN

Once you have assembled your machine completely, it is now time for a test run to make sure that the machine works properly and is ready for operation.

All the tools and objects used for assembling the machine should be removed and cleared away during the test run.

Plug the cord to the power outlet and press the green button to turn the machine ON. Test the ON & OFF buttons make sure it is working properly.

During the test run if there is any unusual noise coming from the machine or the machine vibrates excessively, shut off the machine immediately and disconnect the cord from the power source. Check all the parts you have assembled, once again and investigate to find out the problem.

OPTIONAL GROUNDING KIT FOR CX402

Craftex offers an Optional grounding system with the CX402 to decrease the shock hazard (although extremely rare). The sawdust being collected becomes very dry as it travels through the collection pipes or tubes and as it spins through the system it creates a static charge. If this is not grounded, it could give the tool operator a static shock. Although the electrical shock is extremely minor, it may have consequences to some individuals.

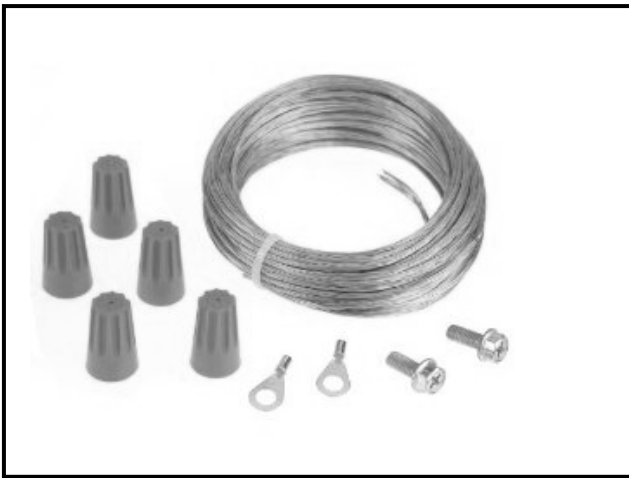


Figure-15 Optional grounding kit

The grounding of the pipes or tubes will help eliminate the possibility of these shocks. The copper wire included with the grounding kit should be connected to the steel chassis of the dust collector and fed through a small hole made in the tubing or pipe. The wire should then be fed to the tool being used and grounded to the steel chassis. Should there be more than one tool connected (through gates) to the CX402, they should all be grounded as described above.

For more information in regards to this, you may refer to the 'Dust Collection Basics' book, model W1050. This book covers all topics in regards to home dust collection for the workshop.

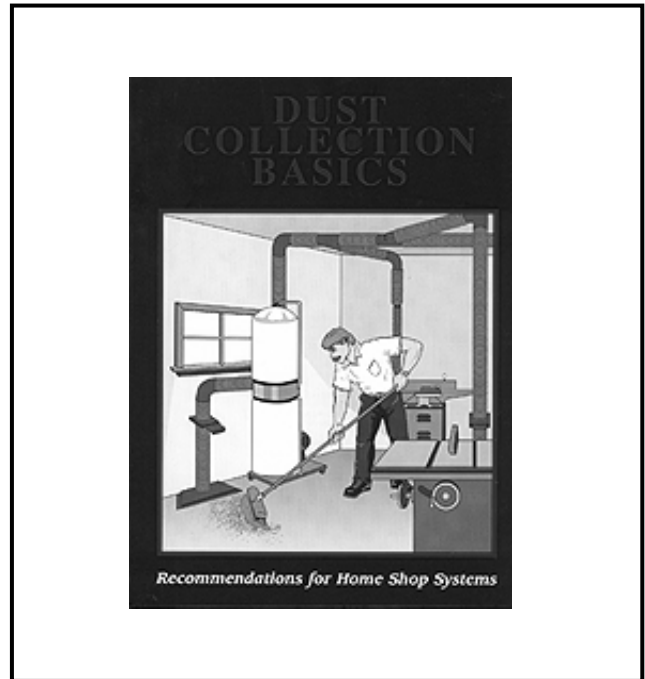


Figure-16 Dust collection basic book
Model# W1050

MAINTENANCE

During the life of your machine, you will need to practice some regular maintenance to keep your saw in peak performance condition.

WARNING

Make sure the machine is turned off and the cord is disconnected from the power source before servicing and removing/replacing any components on the machine.

Check your machine daily for loose mounting bolts, damaged cord, worn switch, full collection bag, or any other unsafe condition.

All bearings are shielded and permanently lubricated and do not need any further lubrication.

EMPTYING THE COLLECTION BAG

The collection bags should be emptied at a regular basis allowing the machine to operate at a higher level.

Always wear proper dust mask or respirator while emptying the collection bag. The small dust particles flying into the air while emptying the collection bag can be easily inhaled and is extremely unhealthy, causing serious long term respiratory problems.

CLEANING THE CANISTER

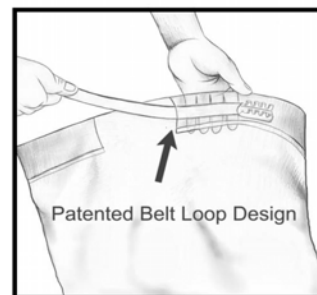
The canister features a cleaning handle which is used to clean the canister filter. To clean the canister filter simply move the handle back and forth and the trapped dust particles will fall into the collection bag.



Figure-17 Canister filter cleaning handle

OPTIONAL ACCESSORIES

EASY ON DUST COLLECTOR BAGS

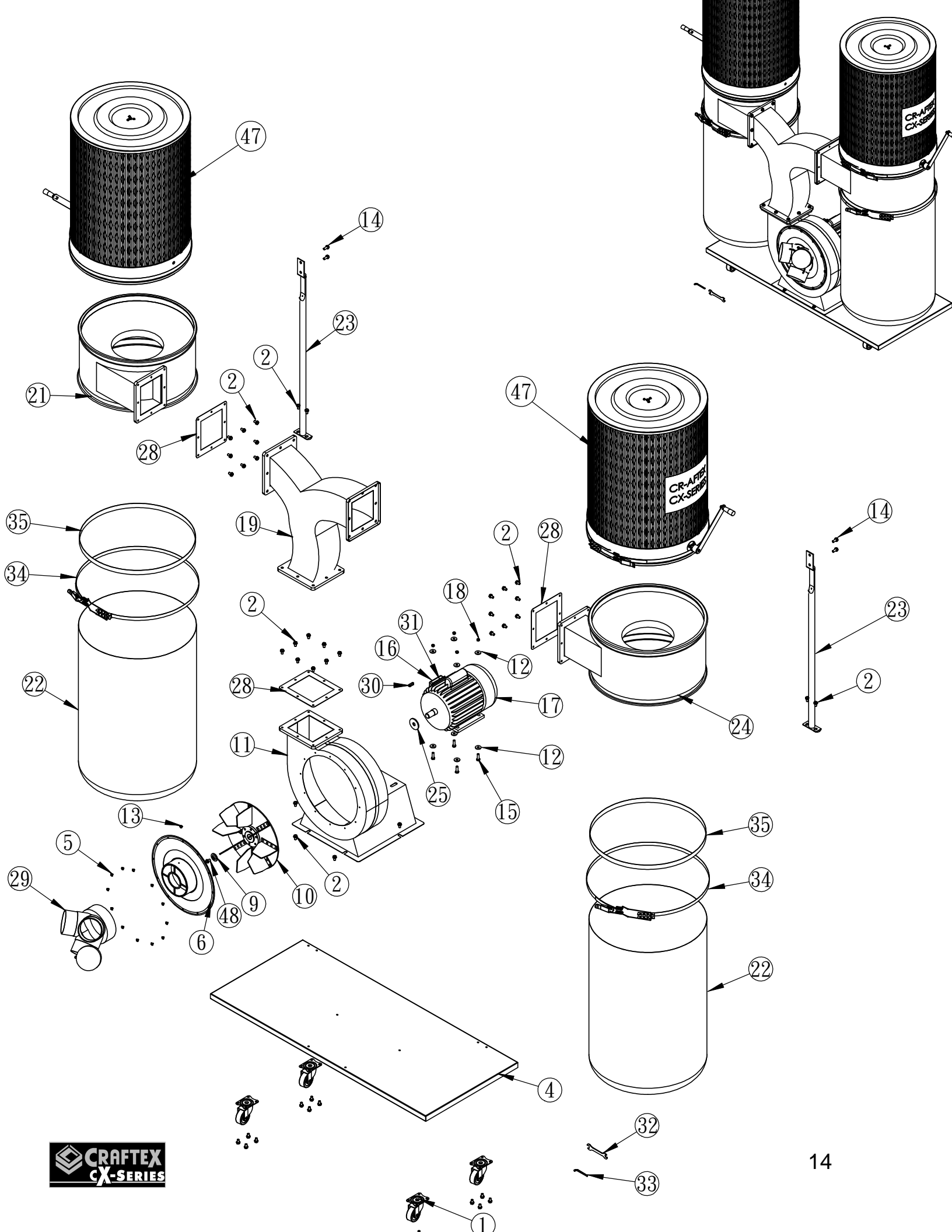


Model CT156

These bags feature a unique belt design that makes use of your existing clamp & keeps the perfect shape for removing, emptying & placing the bag back on your dust collector.

Made of tough polyethylene, these bags are very strong and designed to handle tough loads.

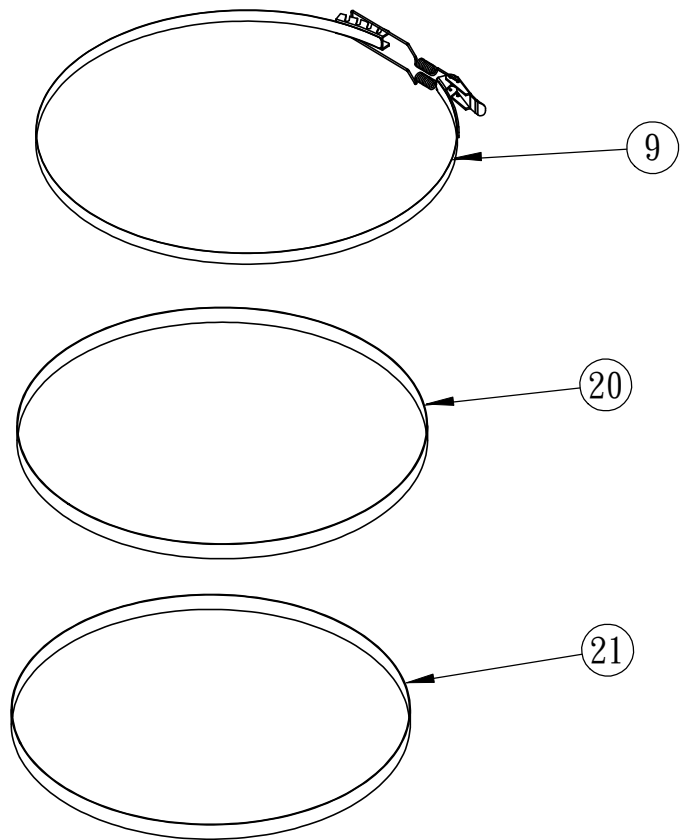
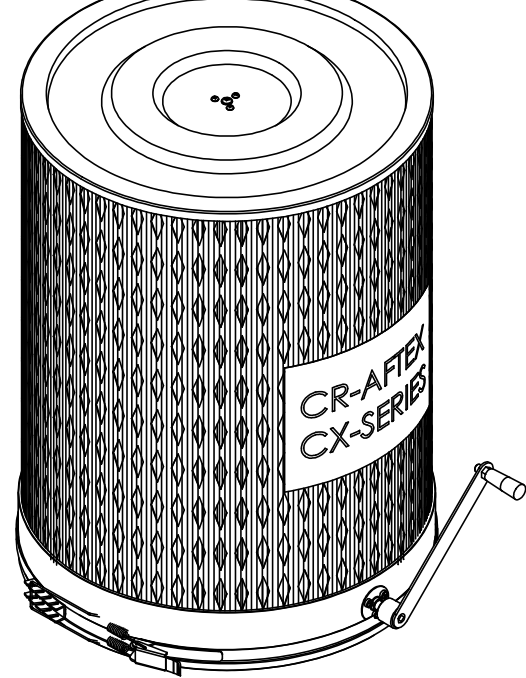
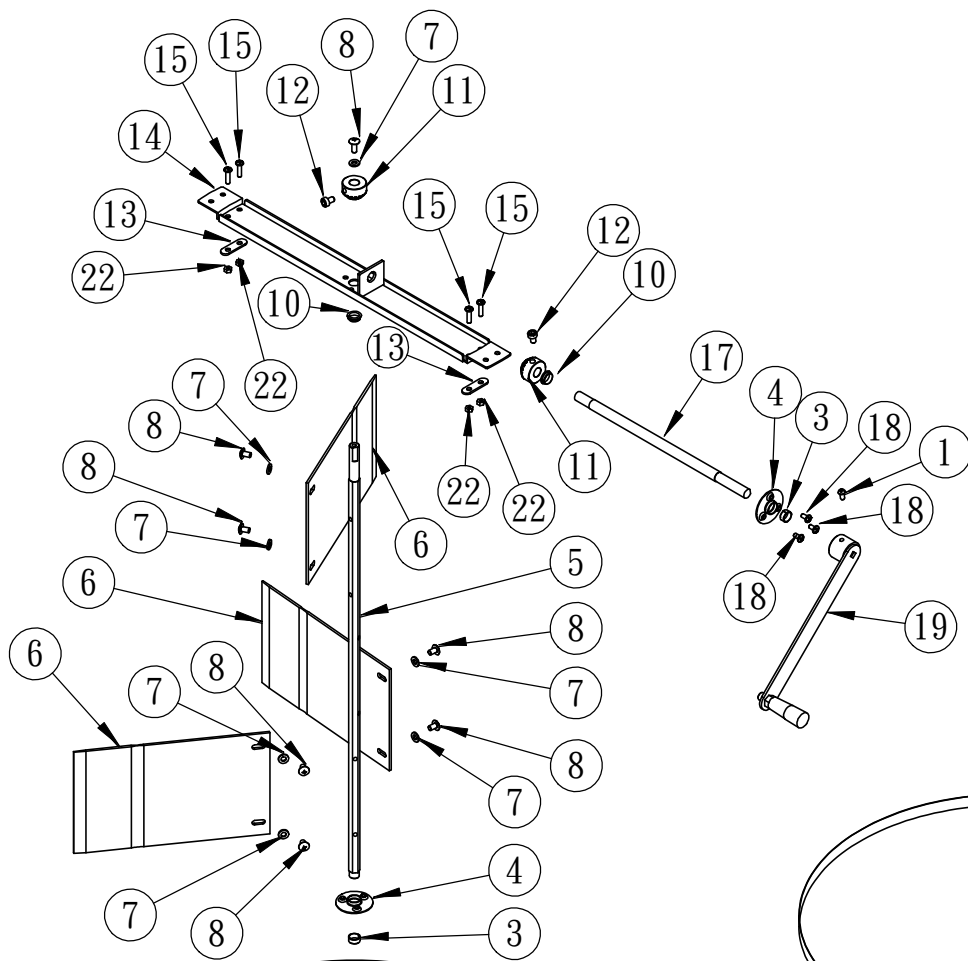
Visit www.busybeetools.com for more accessories.





CX402 PARTS LIST

Item no.	Description	Parts no.	Q.TY
1	CASTER	014-0003	4
2	FLANGE BOLT 5/16"*1/2"	004-0481	48
4	BASE PLATE	008-0118	1
5	PHLP HD SCREW 3/16"*3/8"	004-0205	12
6	INLET COVER 6"	006-0204	1
9	IMPELLER WASHER	004-1031	1
10	ALUMINUM IMPELLER - 12"-3/4"	007-3066	1
11	COLLECTOR BODY	005-0401	1
12	FLAT WASHER	004-1006	8
13	PHLP HD SCREW 3/16"*3/8"	004-0205	1
14	FLANGE BOLT 5/16"*1/2"	004-0481	4
15	HEX BLOT 5/16" x 1"	004-0415	4
16	PADDLE SWITCH	001-0616	1
17	3 HP MOTOR		1
18	NUT 5/16"	004-0904	4
19	METAL Y OUTLET	1023-0103	1
21	LEFT COLLECTOR	009-0202	1
22	PE BAG	031-0301	2
23	COLLECTOR SUPPORT	022-0101	2
24	RIGHT COLLECTOR	009-0301	1
25	SPACER	016-0103	1
28	RUBBER GASKET	016-0002	3
29	INLET 6" x 4		1
30	KEY 7 x 7 x 25	004-1704	1
31	WIRE		1
32	WRENCH 10 x 12	004-1202	1
33	HEX WRENCH - M5		1
34	BELT CLAMP	012-0007	2
35	FOAM STRIP	016-0329	2
47	CANISTER FILTER	009-1017	2
48	CAP SCREW M6 x 20 (LH)	004-0565	1





CK-500H PARTS LIST

Item no.	Description	Parts no.	Q.TY
1	HEX SCREW - M6 x 16	004-2021	1
2	CANISTER UNIT	009-1017	1
3	BEARING 12 x 14, H=6	035-0517	2
4	BEARING FIXING PLATE	037-1257	2
5	SPINDLE	036-2321	1
6	FLAPPER	023-0701	3
7	WASHER 1/4"	004-1015	8
8	PHILP. HD SCREW - M6*10	004-0228-1	8
9	BELT CLAMP	012-0210	1
10	BEARING 13.6 x 17 x 12, H=4.6	035-0526	2
11	BEVEL GEAR	036-2320	2
12	SET SCREW 1/4"*1/2"mm	004-0502	2
13	FIXING PLATE	037-1254	2
14	BOTTOM FIXING PLATE	045-0064	1
15	PHILP. HD SCREW - M5 x 15	004-0208	4
16	PHILP. HD SCREW - M5 x 10	004-0242-1	3
17	CONNECTING SPINDLE	036-2317	1
18	FLATE HD SCREW - M5X10	004-0001	3
19	HANDLE -N TYPE	029-0014	1
20	FOAM STRIP - 5*42*1565	016-0330	1
21	FOAM STRIP - 4*20*1560	016-0329	1
22	NUT - M5	004-0902	4



WARRANTY

CRAFTEX 3 YEARS LIMITED WARRANTY

Craftex warrants every product to be free from defects in materials and agrees to correct such defects where applicable. This warranty covers **three years** for parts and 90 days for labour (unless specified otherwise), to the original purchaser from the date of purchase but does not apply to malfunctions arising directly or indirectly from misuse, abuse, improper installation or assembly, negligence, accidents, repairs or alterations or lack of maintenance.

Proof of purchase is necessary.

All warranty claims are subject to inspection of such products or part thereof and Craftex reserves the right to inspect any returned item before a refund or replacement may be issued.

This warranty shall not apply to consumable products such as blades, bits, belts, cutters, chisels, punches etceteras.

Craftex shall in no event be liable for injuries, accidental or otherwise, death to persons or damage to property or for incidental contingent, special or consequential damages arising from the use of our products.

RETURNS, REPAIRS AND REPLACEMENTS

To return, repair, or replace a Craftex product, you must visit the appropriate Busy Bee Tools showroom or call 1-800-461-BUSY. Craftex is a brand of equipment that is exclusive to Busy Bee Tools.

For replacement parts directly from Busy Bee Tools, for this machine, please call 1-800-461-BUSY (2879), and have your credit card and part number handy.

- All returned merchandise will be subject to a minimum charge of 15% for re-stocking and handling with the following qualifications.
- Returns must be pre-authorized by us in writing.
- We do not accept *collect* shipments.
- Items returned for warranty purposes must be insured and shipped pre-paid to the nearest warehouse
- Returns must be accompanied with a copy of your original invoice as proof of purchase. Returns must be in an un-used condition and shipped in their original packaging a letter explaining your reason for the return. Incurred shipping and handling charges are not refundable.
- Busy Bee will repair or replace the item at our discretion and subject to our inspection.
- Repaired or replaced items will be returned to you pre-paid by our choice of carriers.
- Busy Bee reserves the right to refuse reimbursement or repairs or replacement if a third party without our prior authorization has carried out repairs to the item.
- Repairs made by Busy Bee are warranted for 30 days on parts and labour.
- Any unforeseen repair charges will be reported to you for acceptance prior to making the repairs.
- The Busy Bee Parts & Service Departments are fully equipped to do repairs on all products purchased from us with the exception of some products that require the return to their authorized repair depots. A Busy Bee representative will provide you with the necessary information to have this done.
- For faster service it is advisable to contact the nearest Busy Bee location for parts availability prior to bringing your product in for repairs.