



CX410

1-1/2 HP METALWORKING DUST COLLECTOR

USER MANUAL



COPYRIGHT © 2015 BY CRAFTEX INDUSTRIES INC.

NO PORTION OF THIS MANUAL MAY BE PRODUCED WITHOUT
THE WRITTEN CONSENT OF CRAFTEX INDUSTRIES INC.



Version 1.0

TABLE OF CONTENTS

General Safety Instructions.....	3
Features.....	4
Physical Features	5
Un-Packing	6
Inventory	6
Proper Grounding	6
Assembly	7
ON/OFF Switch.....	8
Connecting Machines to Dust Collector	8
Test Run	9
Maintenance	9
Lubrication	9
Machine Storage.....	9
Emptying Collection Drawer.....	9
Re-placing the Filter.....	10
Parts Diagram	12
Parts List.....	13
Warranty	15

GENERAL SAFETY INSTRUCTIONS FOR MACHINES

Extreme caution should be used when operating all power tools. Know your power tool, be familiar with its operation, read through the owner's manual and use safe usage practices at all times.

- ❖ **ALWAYS** read and understand the user manual before operating the machine.
- ❖ **CONNECT** your machine ONLY to the matched and specific power source.
- ❖ **ALWAYS** wear safety glasses respirators, hearing protection and safety shoes, when operating your machine.
- ❖ **DO NOT** wear loose clothing or jewelry when operating your machine.
- ❖ **A SAFE ENVIRONMENT** is important. Keep the area free of dust, dirt and other debris in the immediate vicinity of your machine.
- ❖ **BE ALERT! DO NOT** use prescription or other drugs that may affect your ability or judgment to safely use your machine.
- ❖ **DISCONNECT** the power source when changing drill bits, hollow chisels, router bits, shaper heads, blades, knives or making other adjustments or repairs.
- ❖ **NEVER** leave a tool unattended while it is in operation.
- ❖ **NEVER** reach over the table when the tool is in operation.
- ❖ **ALWAYS** keep blades, knives and bits sharpened and properly aligned.
- ❖ **ALL OPERATIONS MUST BE** performed with the guards in place to ensure safety.
- ❖ **ALWAYS** use push sticks, feather boards or other safety devices to safely feed your work through the machine.
- ❖ **ALWAYS** make sure that any tools used for adjustments are removed before operating the machine.
- ❖ **ALWAYS** keep the bystanders safely away while the machine is in operation.
- ❖ **NEVER** attempt to remove jammed cutoff pieces until the saw blade has come to a full stop.
- ❖ **NEVER** expose the machine to rain. Store the machine in a safe & dry place.

WARNING!

The safety instructions given above can not be complete because the environment in every shop is different. Always consider safety first as it applies to your individual working conditions.



CX410 DUST COLLECTOR

FEATURES

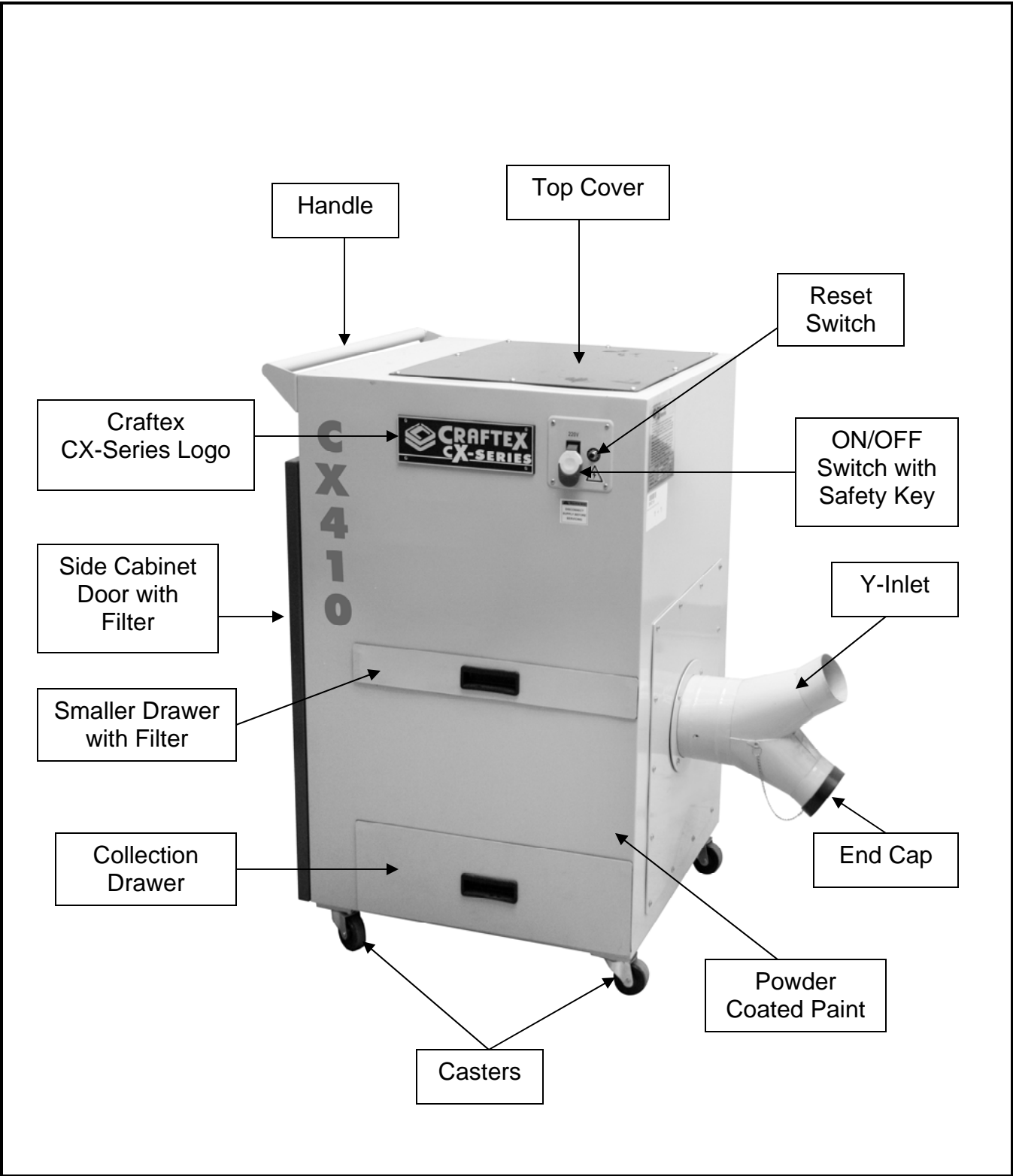
MODEL CX410 1-1/2 HP METALWORKING DUST COLLECTOR

As part of the growing line of Craftex metalworking equipment, we are proud to offer the CX410 a 1-1/2 HP Metalworking Dust Collector. By following the instructions and procedures laid out in this user manual, you will receive years of excellent service and satisfaction. The CX410 is a professional tool and like all power tools, proper care and safety procedures should be adhered to.

- ⊞ Motor 1.5 HP, 220 V, 60 Hz, Single Phase
- ⊞ Amps 9 Amps
- ⊞ Air Capacity 937 CFM
- ⊞ Static Pressure 9.32 in H₂O
- ⊞ Noise 1M >>82.5 dB, 3M >> 81.3 dB
- ⊞ Number of Filters Two
- ⊞ Filter Type..... Iron Activated Carbon Filter & Paper
- ⊞ Filter Size..... 19.3" x 15.3" x 0.8" & 1" x 16" x 25"
- ⊞ ON/OFF Switch with Safety Key..... Yes
- ⊞ Dust Collection Ports One 6" with a Removable Y-Inlet (4" Each)
- ⊞ Four Casters for Portability Yes
- ⊞ Powder Coated Paint..... Yes
- ⊞ Shipping Weight 102 Kgs
- ⊞ Warranty 3 Years

CX410 1-1/2 HP METALWORKING DUST COLLECTOR

PHYSICAL FEATURES



UNPACKING

The machine is properly packaged and shipped completely in a box for safe transportation. When unpacking, carefully inspect the box and ensure that nothing has been damaged during transit. Open the box and check that the machine and the parts are in good condition.

NOTICE!

While doing inventory, if you can not find any part, check if the part has already been installed on the machine. Some parts come pre-assembled for shipping purposes.

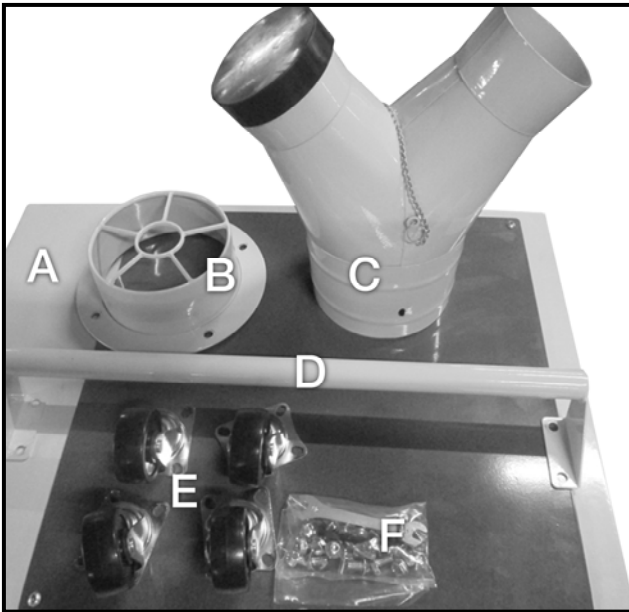


Figure-1 Inventory

INVENTORY

A. Dust Collector	1
B. Suction Tube	1
C. Y-Inlet.....	1
D. Handle.....	1
E. Casters.....	4
F. Hardware.....	1 Pack

PROPER GROUNDING

Grounding provides a path of least resistance for electric current to reduce the risk of electric shock.

CX410 is for use on a normal 220 volt circuit. Make sure that the machine is connected to an outlet having the same configuration as the plug. If an adaptor plug is used, it must be attached to the metal screw of the receptacle. To prevent electrical hazards, have a qualified electrician ensure that the line is properly wired.

The dust collector should be wired with a plug having 3 prongs to fit a 3 prong grounded receptacle as shown in figure-2. Do not remove the grounding prong to fit it into a 2 pronged outlet.

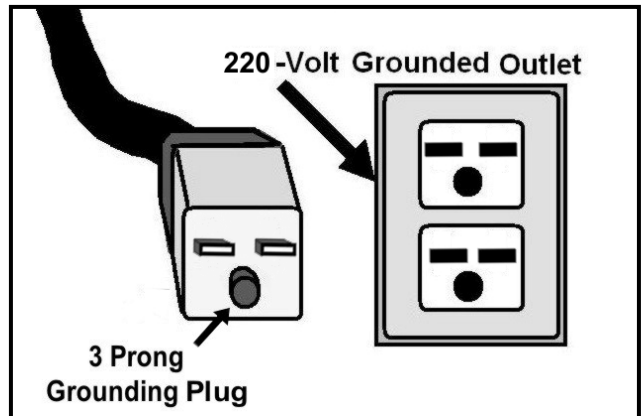


Figure-2 110-Volts outlet for CX410

It is strongly recommended not to use extension cords with your CX410. Always try to position your machine close to the power source so that you do not need to use extension cords.

If it is necessary to use an extension cord, make sure the extension cord does not exceed 50-feet in length and the cord is 14-gauge to prevent motor damage.

ASSEMBLY

To assemble your CX410, follow the instructions given below:

The CX410 comes with four swivel casters for portability. To install the casters:

Put a piece cardboard on the floor to prevent the dust collector body from being scratched. Get the help of a friend or assistant and position the dust collector on the cardboard on its side.

Attach the swivel caster to the dust collector base by aligning the four holes on the base with the four holes on the swivel caster bracket and securing it using the screws and washers provided. See figure-3.

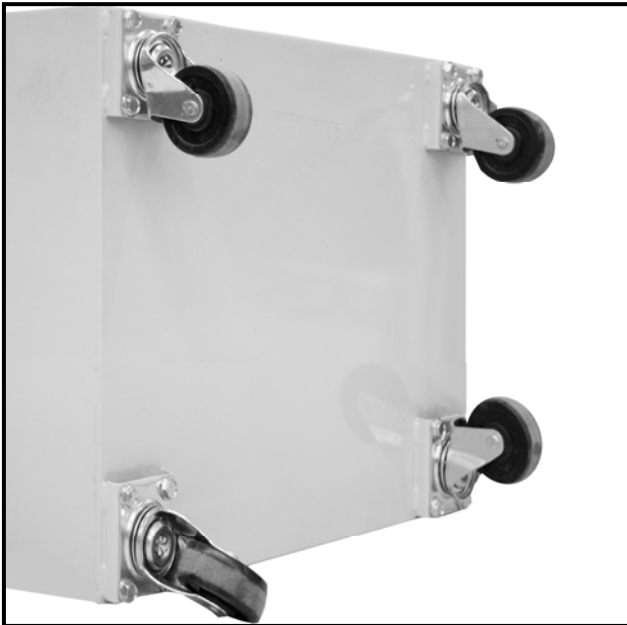


Figure-3 Installing the casters

Once the casters are installed, put the dust collector upright and attach the suction tube to the dust collector. Secure it using the screws and washers provided. See figure-4.



Figure-4 Attaching the suction tube to the dust collector

Now, attach the Y-inlet on to the suction tube and secure it using screws and washers provided. See figure-5.



Figure-5 Attaching the Y-inlet

Align the four holes on the handle with the holes on top part of the dust collector and thread the screws to secure the handle to the dust collector. See figure-6.

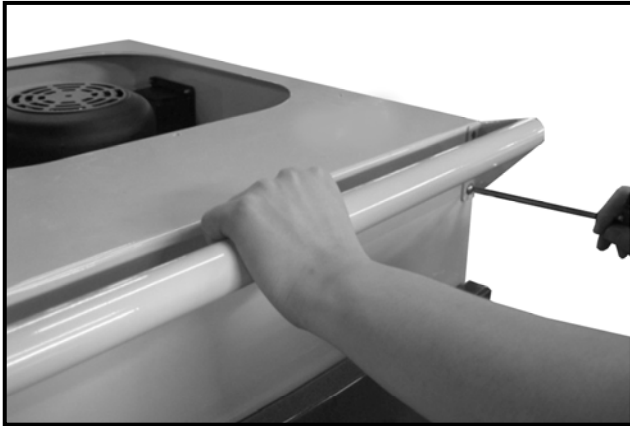


Figure-6 Installing the handle

ON/OFF SWITCH

The CX410 is equipped with a rocker type ON/OFF switch used to run the dust collector and stop it.



Figure-7 ON/OFF switch

The ON/OFF switch features a safety key which prevents from unauthorized usage.

When you are not using the dust collector for a long period of time, remove the safety key. When the safety key is removed, the switch does not work and the dust collector does not turn on.

CONNECTING MACHINES TO DUST COLLECTOR

The CX410 features a 6" suction tube and comes with a Y-inlet having two 4" ports.

When connecting machines to the dust collector, use proper sized hose and make sure all the connections are sealed tightly.

When you are using only one of the ports with a machine, simply put the end cap (provided) onto the other port.



Figure-8 End cap installed on to the Y-inlet

TEST RUN

Now that you have assembled your machine completely, it is time for a test run to make sure that the machine works properly and is ready for operation.

All the tools and objects used for assembling the machine should be removed and cleared away during the test run.

WARNING!

Before starting the dust collector, make sure that you have read and understood the manual and you are familiar with the functions and safety features on this machine. Failure to do so may cause serious personal injury.

Plug the cord to the power outlet and turn the dust collector ON. See if the dust collector operates correctly.

During the test run if there is any unusual noise coming from the machine or the machine vibrates excessively, shut off the machine immediately and disconnect the cord from the power source. Check all the parts you have assembled once again and investigate to find out the problem.

If the dust collector operates correctly, turn the machine OFF and remove the safety key on the switch.

Once the safety key is removed, turn the switch ON.

The machine should not run with the safety key removed.

MAINTENANCE

During the life of your machine, you will need to practice some regular maintenance to keep your dust collector in peak performance condition.

Check the dust collector daily for loose mounting bolts/screws, damaged wires, worn switch, full collection drawer and any other unsafe condition.

WARNING!

Make sure the machine is turned off and the cord is disconnected from the power source before servicing and removing/replacing any components on the machine.

LUBRICATION

The dust collector has sealed lubricated bearings in the motor housing and arbor assembly and do not require any lubrication.

MACHINE STORAGE

When the dust collector is not in use, disconnect the cord from the power source and store it in a dry place. Do not expose the machine to rain. Make sure to keep the cord away from potential damage sources such as; sharp objects, chemicals, heat sources and water.

COLLECTION DRAWER

The CX410 features a collection drawer inside the cabinet where it collects all the dust. The drawer on your dust collector

must be checked and emptied regularly. The machine operates at a much higher level of efficiency when the collection drawer is empty.

Emptying the drawer is very simple and easy.

Make sure the switch is in the OFF position and the cord is disconnected from the power source.

Pull the drawer out using the handle shown in figure-9.



Figure-9 Opening the drawer

Empty the drawer and slide it back in position.

REPLACING THE FILTERS

The CX410 features two filters; located in the smaller drawer and inside the dust collector cabinet door.

To replace the filters on CX410, make sure the switch is the OFF position and the cord is disconnected from the power source.

Open the smaller drawer and replace the old filter with a new one. See figure-10.

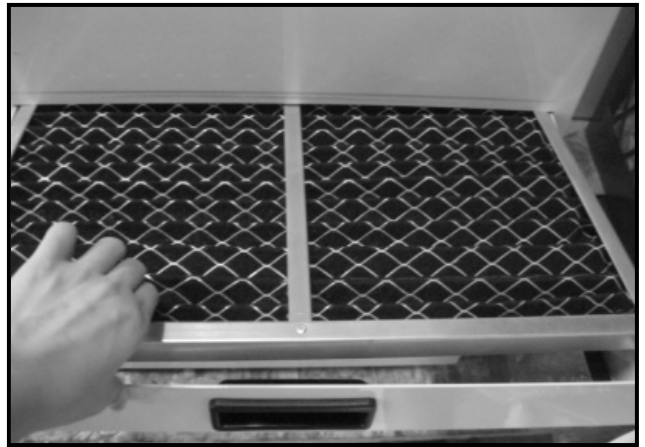


Figure-10 Replacing the old filter with a new one

Open the side cabinet door to access the second filter. See figure-11.

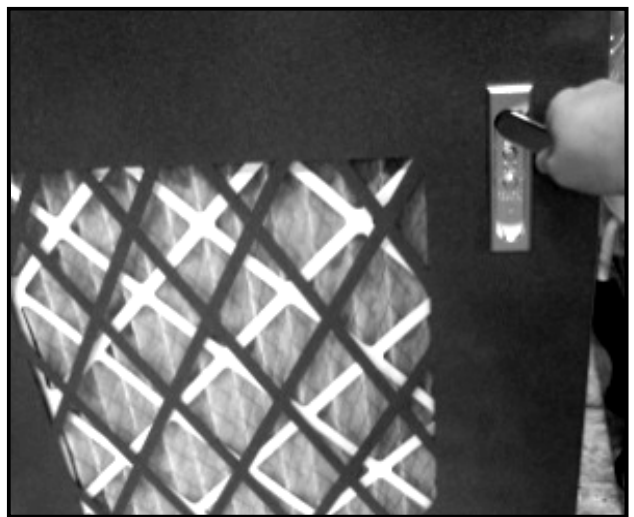


Figure-11 Opening the side cabinet door

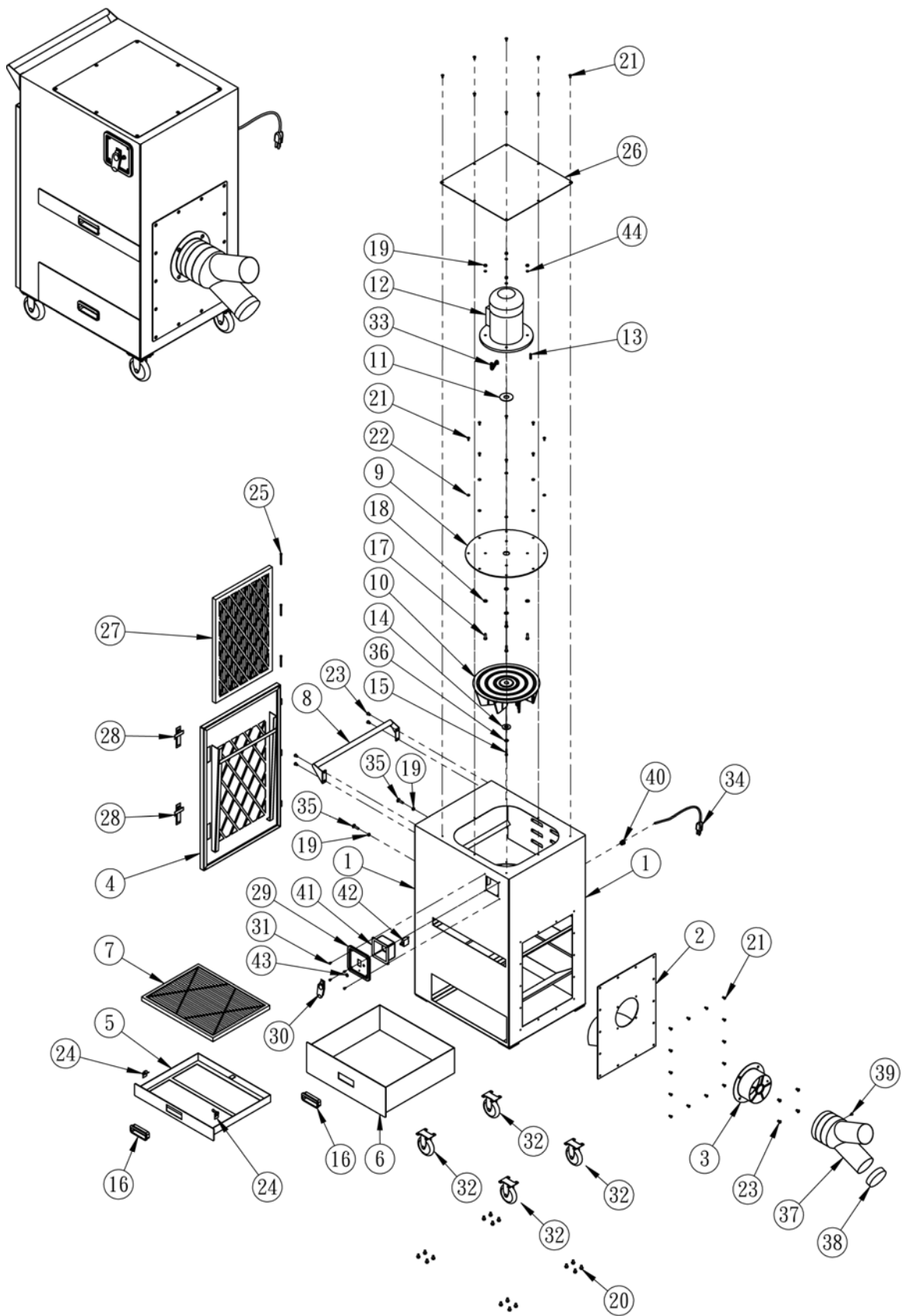
Remove the old filter and install the new one. See figure-12.



Figure-12 Installing the new filter

Once the filter is installed, close the cabinet door.

CX410 PART DIAGRAM



CX410 PART LIST

PART NO.	DESCRIPTION	QTY
1	Main Body	1
2	Side Board	1
3	Suction tube 6"	1
4	Side Door	1
5	Small drawer	1
6	Large drawer	1
7	Iron activated carbon filter 492 x 391 x 22 mm	1
8	Handle	1
9	Motor board	1
10	Impeller 12"	1
11	Motor Gasket	1
12	Motor 1.5HP	1
13	Key	1
14	Impeller Washer	1
15	Cap Screw M6*30 LH	1
16	Drawer Handle	2
17	Hex Bolt 5/16"*1"	4
18	Flat Washer 5/16"	4
19	Nut 5/16"	6
20	Flange Bolt 5/16"*1/2"	16
21	Button Head Socket 1/4"*1/2"	30
22	Flat Washer 1/4"*13	8
23	Button Head Socket 5/16"*1/2"	8
24	Latch	2
25	Pin	3
26	Top Cover	1
27	Filter	1
28	Cabinet Door Lock	2
29	Switch Plate	1
30	ON/OFF Switch with Safety Key	1
31	Round HD screw 3/16"*3/8"	4
32	Caster	4

33	Motor Wire	1
34	Power Cord	1
35	Carriage bolts 5/16*1 1/4	2
36	Spring Washers 1/4"	1
37	Y-Inlet	1
38	End Cap	1
39	Round HD screw with flange 3/16"*3/8"	1
40	PG Busing	1
41	Dust cover	1
42	Temperature control switch 15A	1
43	Nut of Temperature control switch	1
44	Spring Washers 5/16"	4



WARRANTY

CRAFTEX 3 YEARS LIMITED WARRANTY

Craftex warrants every product to be free from defects in materials and agrees to correct such defects where applicable. This warranty covers **three years** for parts and 90 days for labour (unless specified otherwise), to the original purchaser from the date of purchase but does not apply to malfunctions arising directly or indirectly from misuse, abuse, improper installation or assembly, negligence, accidents, repairs or alterations or lack of maintenance.

Proof of purchase is necessary.

All warranty claims are subject to inspection of such products or part thereof and Craftex reserves the right to inspect any returned item before a refund or replacement may be issued.

This warranty shall not apply to consumable products such as blades, bits, belts, cutters, chisels, punches etceteras.

Craftex shall in no event be liable for injuries, accidental or otherwise, death to persons or damage to property or for incidental contingent, special or consequential damages arising from the use of our products.

RETURNS, REPAIRS AND REPLACEMENTS

To return, repair, or replace a Craftex product, you must visit the appropriate Busy Bee Tools showroom or call 1-800-461-BUSY. Craftex is a brand of equipment that is exclusive to Busy Bee Tools.

For replacement parts directly from Busy Bee Tools, for this machine, please call 1-800-461-BUSY (2879), and have your credit card and part number handy.

- All returned merchandise will be subject to a minimum charge of 15% for re-stocking and handling with the following qualifications.
- Returns must be pre-authorized by us in writing.
- We do not accept *collect* shipments.
- Items returned for warranty purposes must be insured and shipped pre-paid to the nearest warehouse
- Returns must be accompanied with a copy of your original invoice as proof of purchase. Returns must be in an un-used condition and shipped in their original packaging a letter explaining your reason for the return. Incurred shipping and handling charges are not refundable.
- Busy Bee will repair or replace the item at our discretion and subject to our inspection.
- Repaired or replaced items will be returned to you pre-paid by our choice of carriers.
- Busy Bee reserves the right to refuse reimbursement or repairs or replacement if a third party without our prior authorization has carried out repairs to the item.
- Repairs made by Busy Bee are warranted for 30 days on parts and labour.
- Any unforeseen repair charges will be reported to you for acceptance prior to making the repairs.
- The Busy Bee Parts & Service Departments are fully equipped to do repairs on all products purchased from us with the exception of some products that require the return to their authorized repair depots. A Busy Bee representative will provide you with the necessary information to have this done.
- For faster service it is advisable to contact the nearest Busy Bee location for parts availability prior to bringing your product in for repairs.