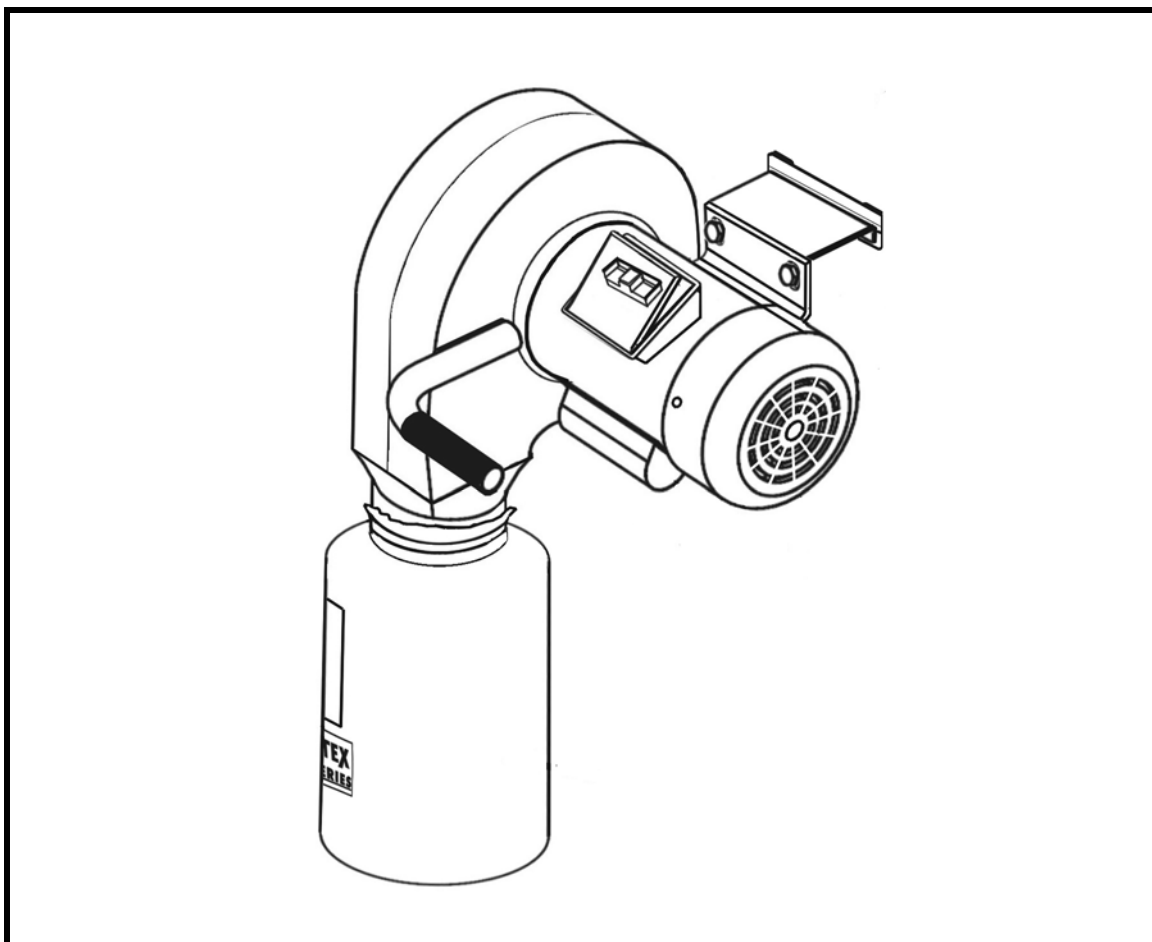




# **CX416**

## **1-HP WALL MOUNT PORTABLE DUST COLLECTOR**

### **USER MANUAL**



# TABLE OF CONTENTS

General Safety Instructions.....	3
CX416 Specific Safety Instructions.....	4
Features.....	5
Physical Features .....	6
Proper Grounding .....	7
Unpacking & Inventory.....	8
Assembly .....	8
Test Run .....	10
Operation .....	10
Maintenance .....	10
Lubrication .....	10
Impeller .....	11
Machine Storage.....	11
Emptying Collection Bag.....	11
Parts Diagram.....	12
Parts List.....	12
Warranty .....	13

# GENERAL SAFETY INSTRUCTIONS

**Extreme caution should be used when operating all power tools. Know your power tool, be familiar with its operation, read through the owner's manual and practice safe usage procedures at all times.**

- ✦ **CONNECT** your machine only to the matched and specific power source.
- ✦ **ALWAYS** wear safety glasses respirators, hearing protection and safety shoes, when operating your machine.
- ✦ **DO NOT** wear loose clothing or jewelry when operating your machine.
- ✦ **GROUND ALL TOOLS** if tool is equipped with three-prong plug, it should be plugged into a three-hole electrical receptacle. If an adapter is used to accommodate a two-prong receptacle, the adapter plug must be attached to a known ground. Never remove the third prong.
- ✦ **A SAFE ENVIRONMENT** is important. Keep the area free of dust, dirt and other debris in the immediate vicinity of your machine.
- ✦ **KEEP CHILDREN AND VISITORS AWAY.** All children and visitors should be kept a safe distance from work area.
- ✦ **NEVER** leave a tool unattended while the machine is in operation.
- ✦ **DON'T OVERREACH.** Keep proper footing and balance at all times.
- ✦ **DISCONNECT** the power source when changing drill bits, hollow chisels, router bits, shaper heads, blades, knives or making other adjustments or repairs.
- ✦ **SECURE WORK.** Use clamps or a vise to hold work when practical. It's safer than using your hand and frees both hands to operate tool.
- ✦ **BE ALERT! DO NOT** use prescription or other drugs that may affect your ability or judgment to safely use your machine.
- ✦ **MAINTAIN TOOLS IN TOP CONDITION.** Keep the blades sharp and aligned. Follow instructions for lubricating and changing accessories.
- ✦ **DISCONNECT TOOLS** before servicing and when changing accessories such as blades, bits, cutters, etc.
- ✦ **ALWAYS** keep all safety guards in place and ensure their proper function.
- ✦ **ALWAYS** operate machinery in well ventilated areas and use wood dust collection systems whenever possible.
- ✦ **ALWAYS** read and understand the user manual before starting the machine. Failure to do so, could result in serious personal injury or damage to the machine.

## CX416 WALL MOUNT DUST COLLECTOR SPECIFIC SAFETY INSTRUCTIONS

Read and understand the instruction manual before operating the dust collector. Basic precautions listed below should always be followed when using your dust collector to reduce the risk of injury, electrical shock or fire.

- ❖ The CX416 is designed to collect sawdust only.
- ❖ **Never** attempt to use this dust collector to vacuum water or any other liquids.
- ❖ **Never** try to use this dust collector to collect large wood pieces.
- ❖ **Never** attempt to use this dust collector to collect metal materials such as screws, nails or other metal parts.
- ❖ **Always** wear respiratory and safety glasses when emptying dust from the collection bags.
- ❖ **Never** operate the dust collector with all blast gates closed.
- ❖ **Always** disconnect the dust collector from its power source when changing or emptying the bags.
- ❖ **Always** be sure that the collection and filter bags are securely fastened to collector body.
- ❖ **Do not** place your hand or tools nears the open inlet while operation. Serious personal injury or damage to the machine can happen.
- ❖ **Always** connect dust collector to the matched power source.

### ***IMPORTANT***

***The safety instructions given above can not be complete because the environment in every shop is different. Always consider safety first as it applies to your individual working conditions.***



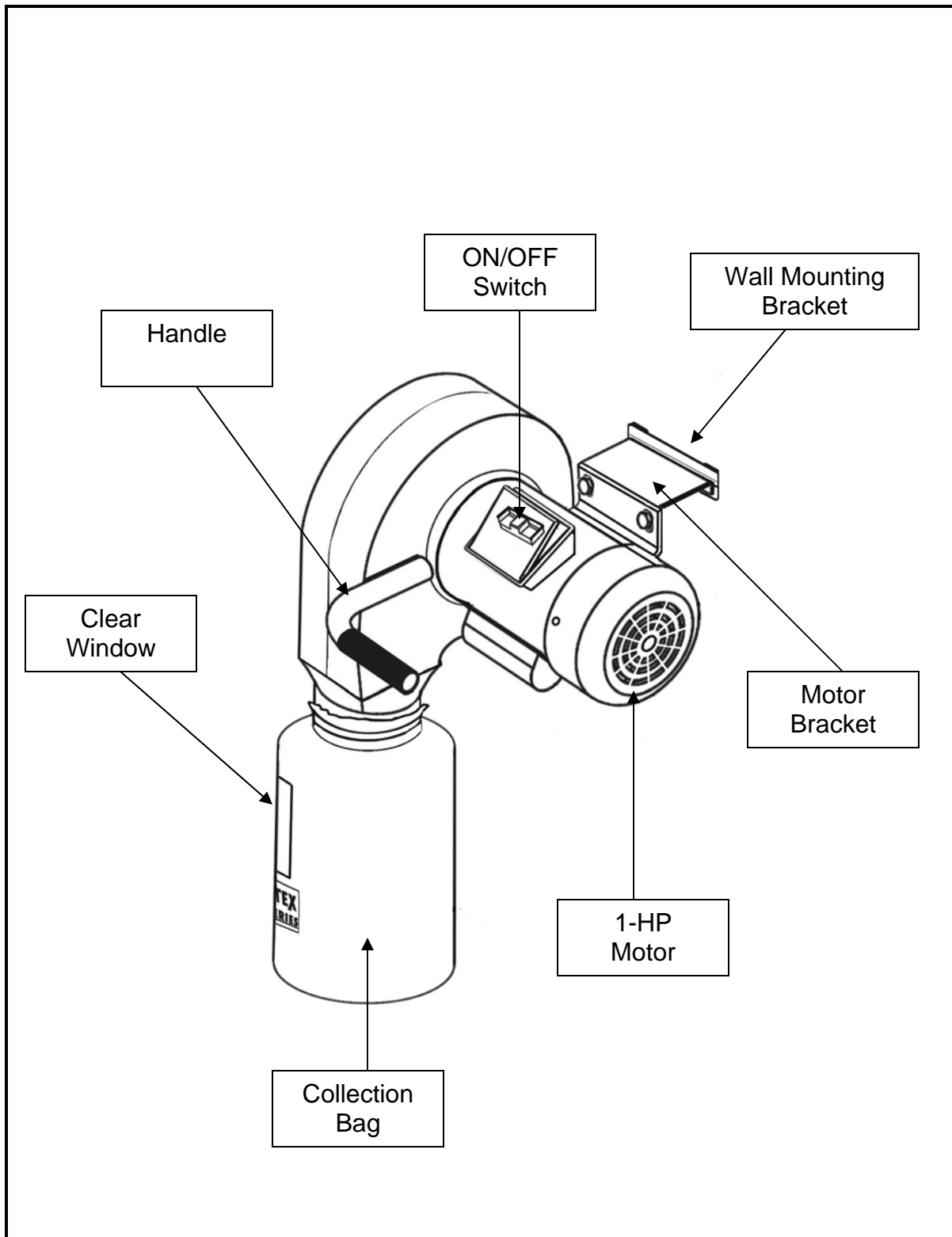
## CX416 FEATURES

### MODEL CX416 1-HP WALL MOUNT DUST COLLECTOR

As part of the growing line of Craftex woodworking equipment, we are proud to offer the CTX416. By following the instructions and procedures laid out in this owner's manual, you will receive years of excellent service and satisfaction. The CX416 is a professional tool and like all power tools, proper care and safety procedures should be adhered to.

- ❖ Motor ..... 1-HP, 110-V, 60-Hz, Single Phase
- ❖ Motor Speed ..... 3450 RPM
- ❖ Bearings ..... Sealed & Permanently Lubricated
- ❖ Cord Length ..... 7 Feet
- ❖ Air Suction Capacity ..... 537 CFM
- ❖ Max. Static Pressure ..... 7.2"
- ❖ Main Inlet Size ..... 4"
- ❖ Impeller Type ..... Radial Fin
- ❖ Impeller Size ..... 10"
- ❖ Collection Bag with a Clear Window and Bottom Zip
- ❖ Powder Coated Paint ..... Yes
- ❖ Overall Dimensions ..... 20" x 18" x 45"
- ❖ Weight ..... 52 lbs
- ❖ Warranty ..... 3 Years

## CX416 - WALL MOUNT DUST COLLECTOR PHYSICAL FEATURES



## PROPER GROUNDING

Grounding provides a path of least resistance for electric current to reduce the risk of electric shock.

To prevent electrical hazards, have a qualified electrician ensure that the line is properly wired.

This machine is for use on a normal 110 volts circuit. Make sure that the machine is connected to an outlet having the same configuration as the plug. If an adaptor plug is used, it must be attached to the metal screw of the receptacle.

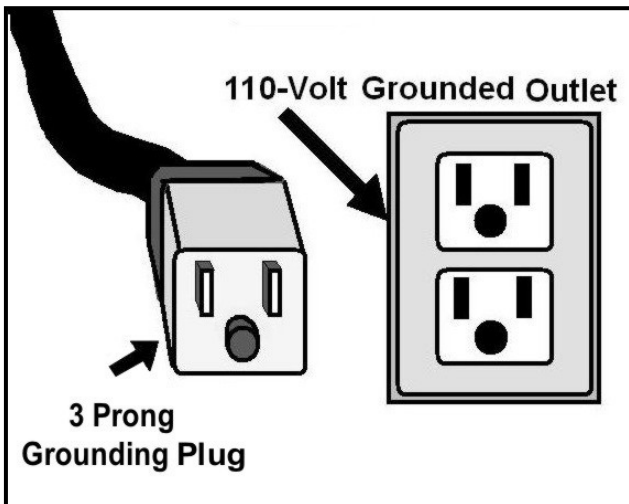


Figure-1 110-Volts Outlet for CX416

### **WARNING!**

*Improper connection of the equipment-grounding conductor can result in a risk of electric shock. Check with a qualified electrician if you are in doubt as to whether the outlet is properly grounded.*

It is strongly recommended not to use extension cords with your CX416. Always try to position your machine close to the power source so that you do not need to use extension cords.

If it necessary to use an extension cord, make sure the extension cord does not exceed 50-feet in length and the cord is 14-gauge to prevent motor damage. Check for heat build up periodically.

Your CTX416 should be wired with a 3-prongs plug fitting a 3 prong grounded receptacles as shown in figure-1. Do not remove the grounding prong to fit it into a 2-pronged outlet. Always check with a qualified electrician if you are in doubt.

# UNPACKING

The machine is properly packaged and shipped completely in a carton for safe transportation. When unpacking, carefully inspect the carton and ensure that nothing has been damaged during transit. Open it and check that the machine and the parts are in good condition.

## CONTENTS

## QTY

A. Collector Body & Motor Assembly .....	1
B. Motor Bracket.....	1
C. Wall Mounting Bracket .....	1
D. Dust Collection Bag.....	1
E. Bag Clamp .....	1
F. Foam Strip.....	1
G. Wrench.....	1
H. Hardware Bag .....	1

While doing inventory, if you can not find any part, check if the part has already been installed on the machine. Some parts come pre-assembled for shipping purposes.

# ASSEMBLY

To assemble your CX416 Wall Mount Dust Collector, follow the instructions given below.

Align the holes on the motor bracket with the holes on the motor base and attach the motor bracket to the motor base using four bolts provided as shown in figure-1.

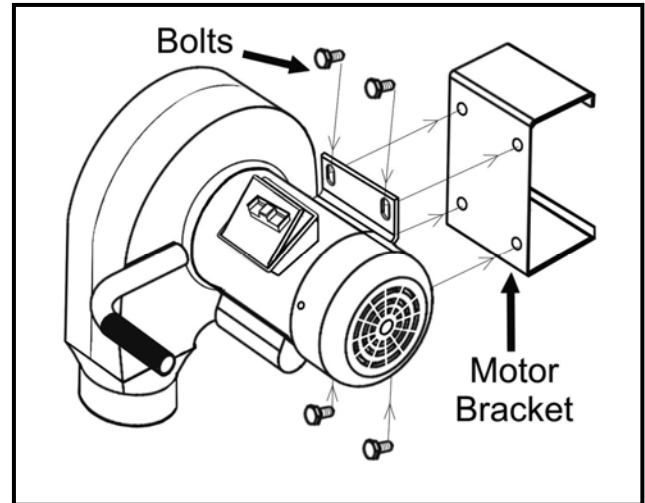


Figure-1 Attaching motor bracket to the motor base

Take the wall mounting bracket and use it as a template on the wall. Mark the mounting the holes with a pen and make sure the mounting bracket is 44" (minimum) from the floor and 6" (minimum) away from the wall so that the motor have enough air cooling space.

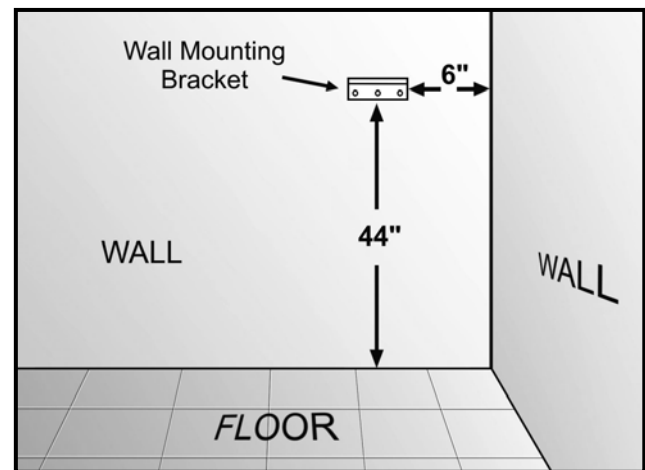


Figure-2 Installing the wall mounting bracket

If you are installing the wall mounting bracket on a concrete or masonry wall, use lag screws with lag shield or anchor studs.



If you are mounting the mounting bracket to a framed wall, the bracket must be attached to a support board that is wide enough to be mounted on two wall studs and having the capacity of holding the dust collector with collection bag full of dust. Secure the support board to the wall studs, using lag screws. See figure-3.

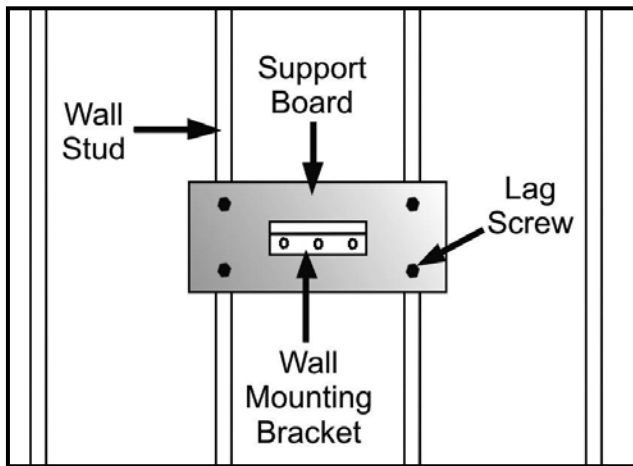


Figure-3 Installing wall mounting bracket on a support board on the wall studs

Once the mounting bracket is installed on the wall, lift the dust collector up and hang it on the bracket.

Install the adhesive foam strip (provided) on the dust collector outlet port as shown in figure-4.

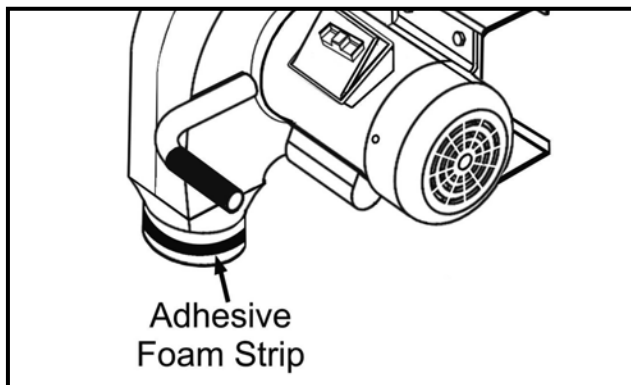


Figure-4 Installing adhesive foam strip

Installing the dust collection bag and secure it using bag clamp (provided). See figure-5.

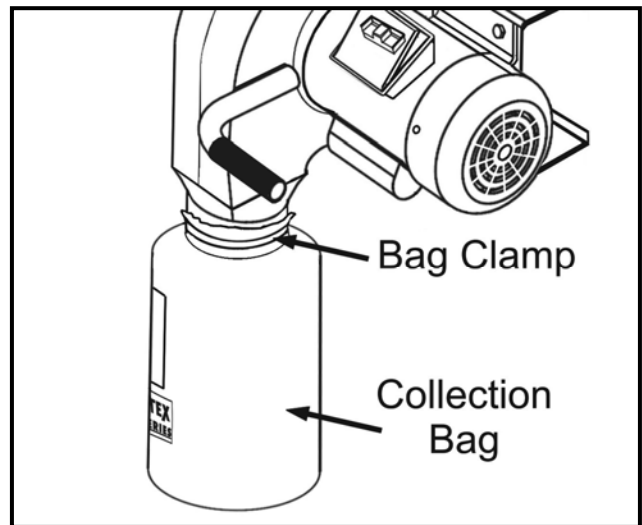


Figure-5 Installing the collection bag

## TEST RUN

Now that you have assembled your machine completely, it is time for a test run to make sure that the machine works properly and is ready for operation.

All the tools and objects used for assembling the machine should be removed and cleared away during the test run. Double check and ensure that the wall mounting bracket is secured properly to the wall.

### **WARNING!**

*Before starting the dust collector, make sure that you have read and understood the manual and you are familiar with the functions and safety features on this machine. Failure to do so may cause serious personal injury.*

Plug the cord to the power outlet and turn the dust collector ON. See if the dust collector operates correctly.

During the test run if there is any unusual noise coming from the machine or the machine vibrates excessively, shut off the machine immediately and disconnect the cord from the power source. Check all the parts you have assembled once again and investigate to find out the problem.

If the dust collector operates correctly, turn the machine OFF and remove the safety key on the switch.

Once the safety key is removed, turn the switch ON.

The machine should not run with the safety key removed.

## OPERATION

CX416 wall mount dust collector is designed to be used with one machine at a time.

Operating this dust collector is simple and easy. Position the machine close to the dust collector, making sure that it is not interfering with each other.

Connect a hose with one end to the dust collector inlet and the other end to the machine outlet. Secure both ends using hose clamps.

## MAINTENANCE

During the life of your machine, you will need to practice some regular maintenance to keep your saw in peak performance condition.

### **WARNING!**

*Make sure the machine is turned off and the cord is disconnected from the power source before servicing and removing/replacing any components on the machine.*

Check the dust collector daily for loose mounting bolts/screws, damaged wires, worn switch, full collection bag and any other unsafe condition.

## LUBRICATION

The shaper has sealed lubricated bearings in the motor housing and arbour assembly and do not require any lubrication.

## **IMPELLER**

The impeller screw might get loosened with use after a period of time. Check the impeller once a month to ensure that impeller screws are tight, securing the impeller on the shaft.

Make sure the machine is turned off and the cord is disconnected from the power source.

Access the impeller screws through the inlet cover on the machine and tighten to secure the impeller on the shaft.

## **MACHINE STORAGE**

When the dust collector is not in use, disconnect the cord from the power source and store the machine in a dry place. Do not expose the machine to rain. Make sure to keep the cord away from potential damage sources such as; sharp objects, chemicals, heat sources and water.

## **EMPTYING COLLECTION BAG**

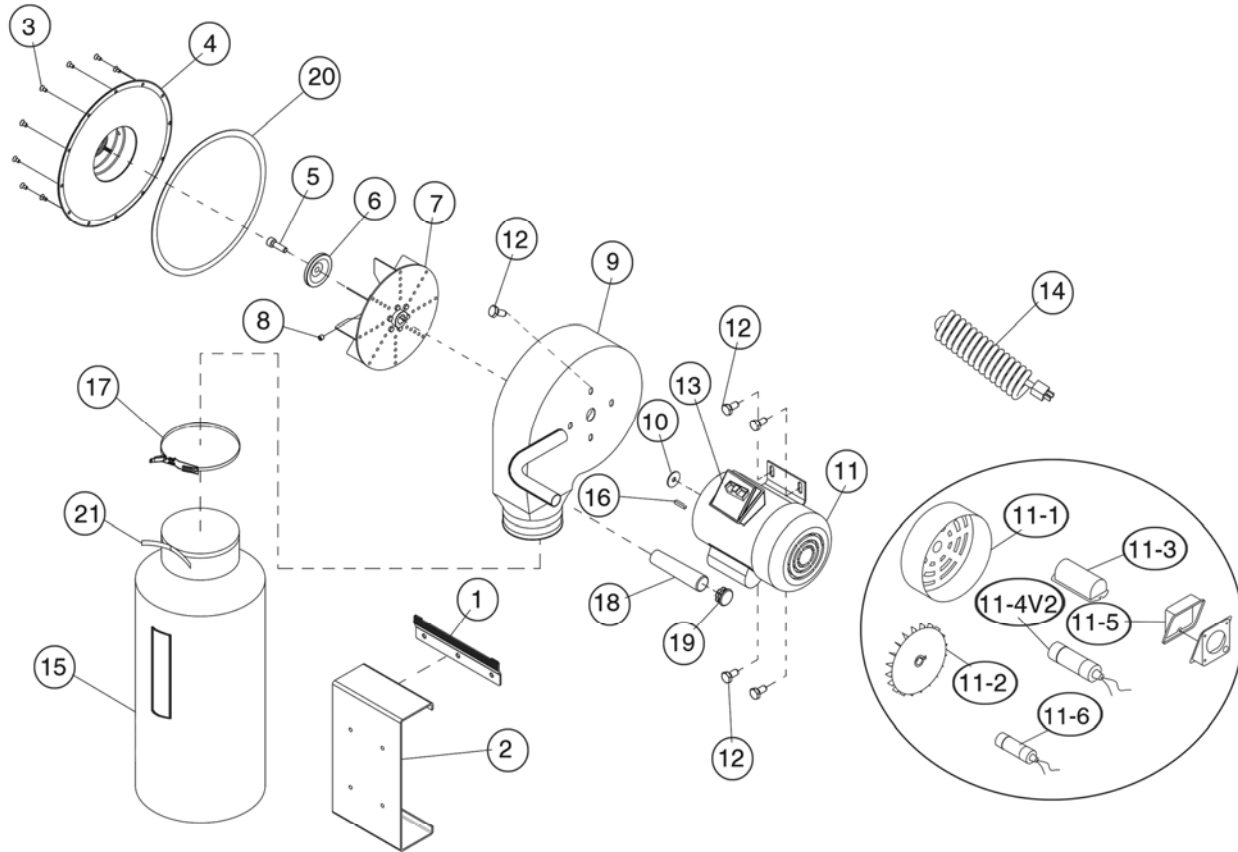
The collection bag on your dust collector must be checked and emptied regularly. The machine operates at a much higher level of efficiency when the collection bag is empty.

The CT167 features a collection bag with a clear window and a bottom zip. The clear window allows operator to see the amount of dust in the bag and the bottom zip makes bag-emptying easy.

# CX416

## 1HP PORTABLE WALL MOUNT DUST COLLECTOR

### PARTS DIAGRAM AND LIST



NO.	DESCRIPTION	NO.	DESCRIPTION
1	WALL MOUNTING BRACKET	11-4	CAPACITOR 200M 125V V2.09.11
2	MOTOR BRACKET	11-5	JUNCTION BOX V2.06.08
3	PHLP HD SCR M5-.8 X 10	11-6	CAPACITOR 30M 250V V2.09.11
4	INLET COVER 11"	12	FLANGE BOLT 1/4-20 X 1/2
5	CAP SCREW M6-1 X 20 LH	13	PADDLE SWITCH W/KEY
6	IMPELLER WASHER 6MM	14	POWER CORD 16AWG 3C 5-15
7	IMPELLER 10"	15	COLLECTION BAG 13-1/2" X 24"
8	SET SCREW 5/16-18 X 3/8	16	KEY 5 X 5 X 25
9	COLLECTOR BODY W/HANDLE	17	BAG CLAMP
10	MOTOR SHAFT SPACER	18	HANDLE COVER
11	MOTOR 1HP 110/220V 1PH	19	HANDLE END CAP
11-1	FAN COVER V2.06.08	20	INLET COVER GASKET
11-2	MOTOR FAN V2.06.08	21	FOAM STRIP 4 X 20 X 430MM
11-3	CAPACITOR COVER V2.06.08		



## WARRANTY

### CRAFTEX 3 YEAR LIMITED WARRANTY

Craftex warrants every product to be free from defects in materials and agrees to correct such defects where applicable. This warranty covers **three years** for parts and 90 days for labour (unless specified otherwise), to the original purchaser from the date of purchase but does not apply to malfunctions arising directly or indirectly from misuse, abuse, improper installation or assembly, negligence, accidents, repairs or alterations or lack of maintenance.

*Proof of purchase is necessary.*

All warranty claims are subject to inspection of such products or part thereof and Craftex reserves the right to inspect any returned item before a refund or replacement may be issued.

This warranty shall not apply to consumable products such as blades, bits, belts, cutters, chisels, punches etceteras.

Craftex shall in no event be liable for injuries, accidental or otherwise, death to persons or damage to property or for incidental contingent, special or consequential damages arising from the use of our products.

### RETURNS, REPAIRS AND REPLACEMENTS

To return, repair, or replace a Craftex product, you must visit the appropriate Busy Bee Tools showroom or call 1-800-461-BUSY. Craftex is a brand of equipment that is exclusive to Busy Bee Tools.

For replacement parts directly from Busy Bee Tools, for this machine, please call 1-800-461-BUSY (2879), and have your credit card and part number handy.

- All returned merchandise will be subject to a minimum charge of 15% for re-stocking and handling with the following qualifications.
- Returns must be pre-authorized by us in writing.
- We do not accept *collect* shipments.
- Items returned for warranty purposes must be insured and shipped pre-paid to the nearest warehouse
- Returns must be accompanied with a copy of your original invoice as proof of purchase. Returns must be in an un-used condition and shipped in their original packaging a letter explaining your reason for the return. Incurred shipping and handling charges are not refundable.
- Busy Bee will repair or replace the item at our discretion and subject to our inspection.
- Repaired or replaced items will be returned to you pre-paid by our choice of carriers.
- Busy Bee reserves the right to refuse reimbursement or repairs or replacement if a third party without our prior authorization has carried out repairs to the item.
- Repairs made by Busy Bee are warranted for 30 days on parts and labour.
- Any unforeseen repair charges will be reported to you for acceptance prior to making the repairs.
- The Busy Bee Parts & Service Departments are fully equipped to do repairs on all products purchased from us with the exception of some products that require the return to their authorized repair depots. A Busy Bee representative will provide you with the necessary information to have this done.
- For faster service it is advisable to contact the nearest Busy Bee location for parts availability prior to bringing your product in for repairs.