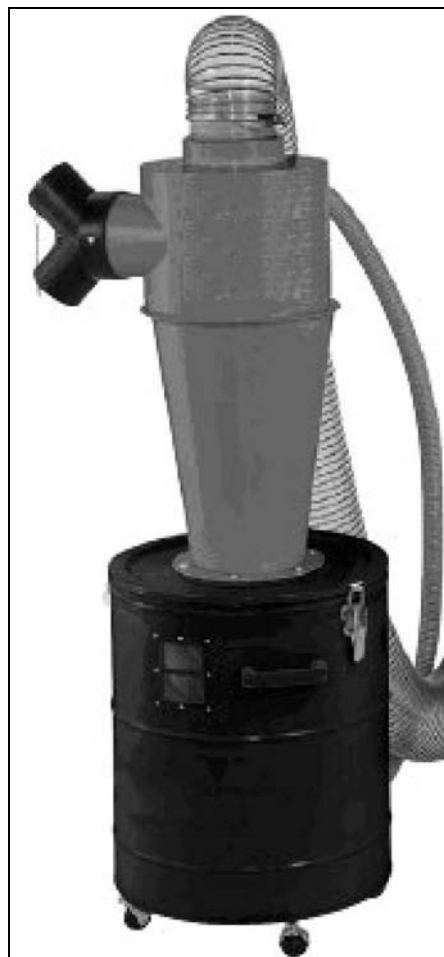




CX422 MINI PORTABLE CYCLONE SEPARATOR

USER MANUAL



COPYRIGHT © 2019 BY CRAFTEX INDUSTRIES INC.

NO PORTION OF THIS MANUAL MAY BE PRODUCED WITHOUT
THE WRITTEN CONSENT OF CRAFTEX INDUSTRIES INC.



CX422 MINI PORTABLE CYCLONE SEPARATOR CRAFTEX MANUAL

Introduction:

The Craftex Mini Portable Cyclone Separator creates a cyclone of incoming air that effectively separates heavy wood chips as well as larger dust particles, helping to increase the efficiency of your single stage dust collection system. This will also result in less suction loss from dirty or clogged filters.

INVENTORY

| Description | Quantity |
|--------------------|-----------------|
|--------------------|-----------------|

| | |
|---|---------------------|
| A. Intake Barrel..... | 1 |
| B. Dust Collection Drum..... | 1 |
| C. Dust Collection Drum Lid..... | 1 |
| D. Cyclone Funnel/W Band Clamp..... | 1 |
| E. Inlet Adaptor 6" x 4" x 2..... | 1 |
| F. Vacuum Ring..... | 1 |
| G. Vacuum Hose 1 ½" x 67"..... | 1 |
| H. Intake Adaptor 7" x 6"..... | 1 |
| I. Universal Reducer..... | 1 |
| J. Open Ended Wrench 10/12mm..... | 1 |
| K. Lock Nuts M4-.7 (Latches)..... | 8 |
| L. Flange Nuts ¼"-20 (Funnel)..... | 6 |
| M. Acorn Nuts ¼"-20 (Handle)..... | 2 |
| N. Phillips Head Screws M4-.7x8(Latches).8 | |
| O. Flange Bolts ¼"-20 x ½" (Funnel)..... | 6 |
| P. 2" Swivel Ball Casters..... | 4 |
| Q. Phillips Head Screws ¼"-20 x 5/8"(Handle)..... | 2 |
| R. Flange Screws #10-24 x 3/8" Intake Adaptor..... | 1 |
| | Inlet Adaptor.....1 |
| S. Dust Collector Drum Latches..... | 2 |

| | |
|--|---|
| T. Hose Clamps 1 ½" | 2 |
| U. Handle..... | 1 |
| V. Plastic Bag 30" x 41" (Not Shown)..... | 1 |



Figure A CX422 Components

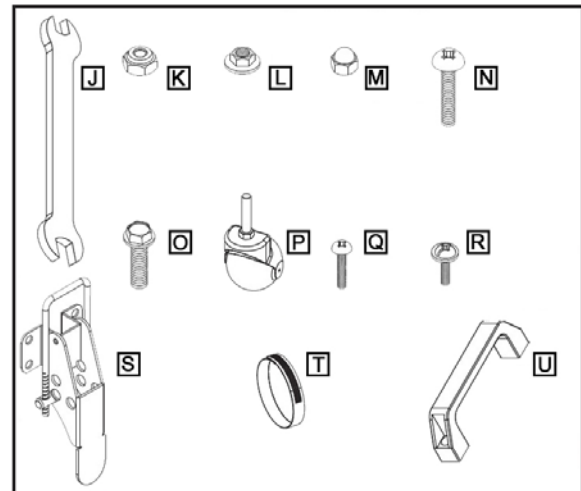


Figure B CX422 Hardware

SPECIFICATIONS

Recommended Horsepower Range for Dust Collector:.....1.5HP-3HP
Suitable Airflow Range for Dust Collector:.....750-23000 CFM
Inlet Size:.....6"
Outlet Size:.....7"
Maximum Material Dust Collection Capacity:.....20 Gallons

ASSEMBLY

WARNING!!!

In order to reduce the risk of injury from airborne debris or possible lung damage always wear safety glasses and a respirator when operating CX422.

1. Install the (4) 2" swivel castors on to the bottom of the dust collection drum. Now attach the handle to the dust collection drum using the (2) ¼"-20 x 5/8" Phillips head screws and (2) ¼"-20 acorn nuts **See Figure C.**

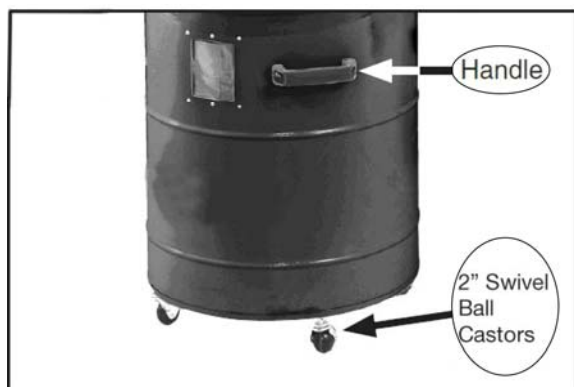


Figure C

2. Install the (2) latches for the dust collection drum using the supplied (8) M4-.7 x 8 Phillips head screws and (8) M4-.7 lock nuts. **See Figure D**



Figure D

3. Take the Vacuum ring and place in to the inside of the dust collection drum with the smaller side of the tapered vacuum ring facing down. **See Figure E.**

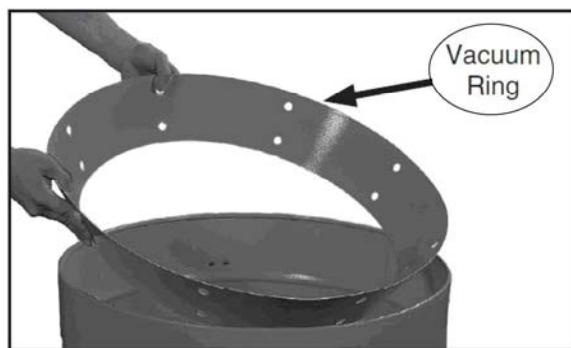


Figure E

4. Take the cyclone funnel and attach it to the dust collection drum lid using the (6) ¼"-20 x ½" flange bolts and (6) ¼"-20 flange nuts. Now set the cyclone funnel and lid on top of the dust collection drum securing in place with the dust collection drum latches. **See Figure F.**

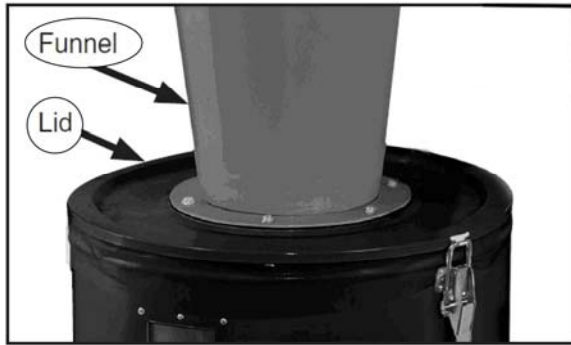


Figure F

5. Loosen the band clamp located at the top of the cyclone funnel to expose the metal lip. **See Figure G**

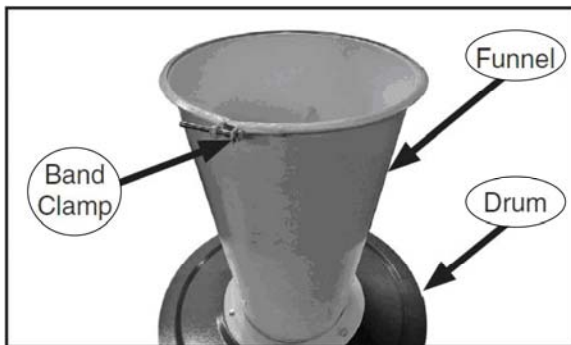


Figure G

6. Take and place the intake barrel on top of the cyclone funnel and position the band clamp so that it captures the lip at the top of the cyclone funnel as well as the lip on the bottom of the intake barrel. Then tighten the band clamp to secure in place. **See Figure H**

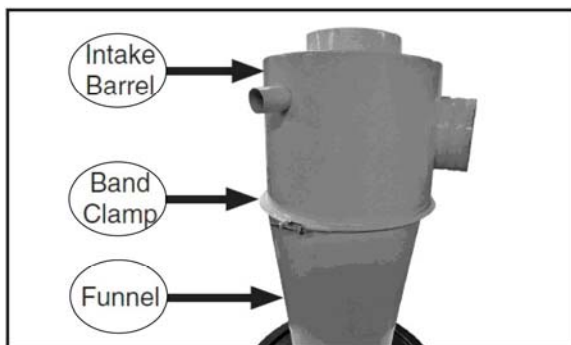


Figure H

7. Take the (2) 1 ½" hose clamps and place them over the ends of the vacuum hose and then attach one end of the vacuum hose to the intake barrel and attach the other end of the vacuum hose to the dust collection drum. Now tighten the hose clamps to secure hose in place. **See Figure I.**

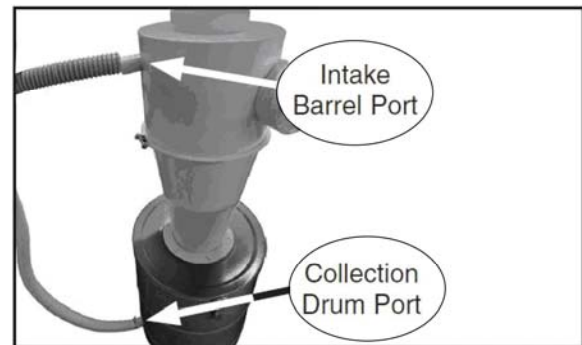


Figure I

8. Take the inlet adaptor and install it on to the dust port and secure it in place using a #10-24 x 3/8" flange screw. **See Figure J.**

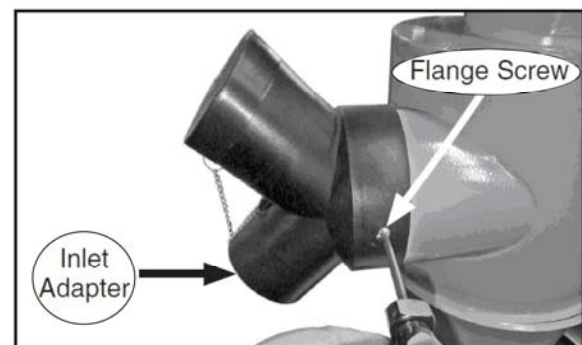


Figure J

9. Take the intake adaptor and install it on to the intake barrel using a #10-24 x 3/8" flange screw. **See Figure K.**

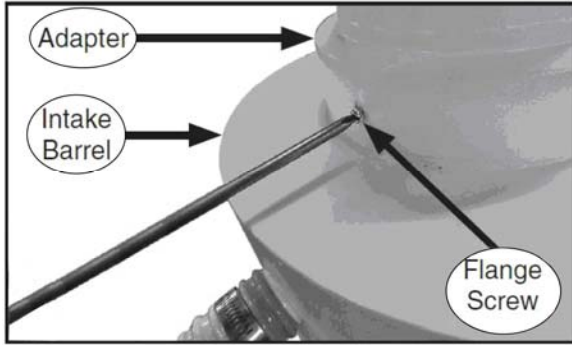


Figure K

10. Insert the plastic dust collection bag into the dust collection drum and fold the excess length of the bag over top of the dust collection drum.
11. Now take the hose from your existing dust collector and attach it to CX422's intake. Now attach a hose from the CX422's inlet to your machine's dust collection port. Secure hoses in place using hose clamps. **See Figure L.**

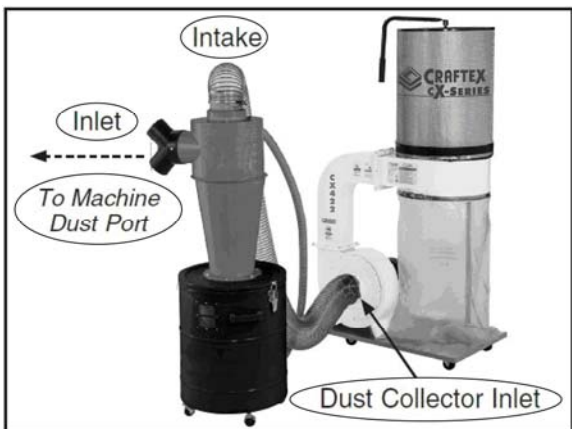


Figure L

MAINTENANCE

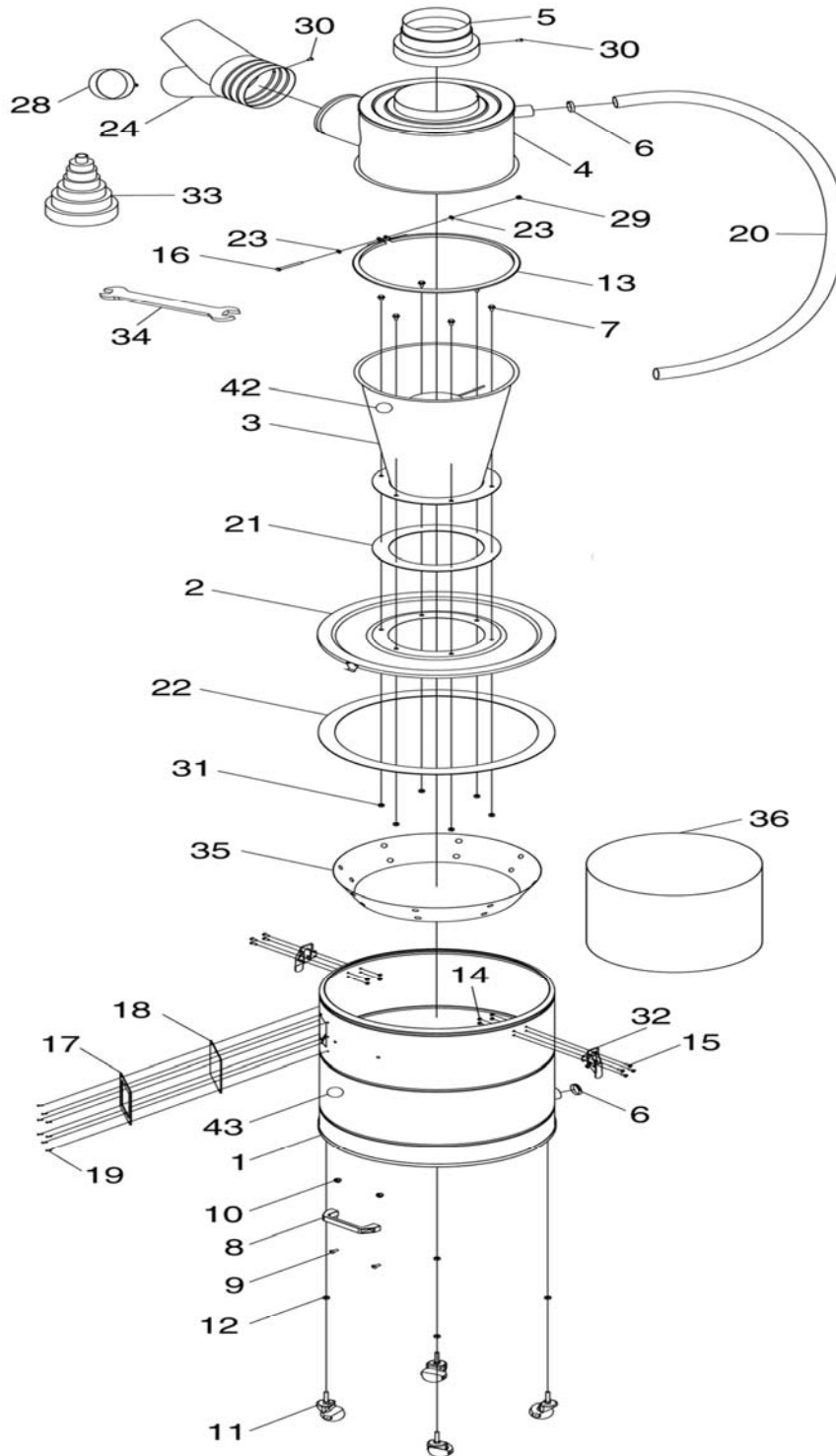
Simply empty out the plastic dust collection bag located in the dust collection drum when the bag appears to be $\frac{3}{4}$ of the way full. This can be seen easily through the window located on the dust collection drum.

NOTE:

In order to contain the wood dust and chips and decrease the possibility of exposure make sure to firmly tie the plastic dust collection bag closed.

If the plastic dust collection bag gets over filled, dust may be sucked back into the intake barrel and then passed through the dust collector filter. This is why it is important to check the window on the dust collection drum frequently in order to prevent excessive dust buildup in the dust collection drum.

CX422 EXPLODED DIAGRAM AND PARTS LIST



PARTS LIST

| REF | PART NUMBER | DESCRIPTION |
|-----|-------------|---------------------------------------|
| 1 | PCX422001 | Dust Collection Drum |
| 2 | PCX422002 | Dust Collection Drum Lid |
| 3 | PCX422003 | Cyclone Funnel |
| 4 | PCX422004 | Intake Barrel |
| 5 | PCX422005 | Intake Adaptor 7" x 6" |
| 6 | PCX422006 | Hose Clamp 1 ½" |
| 7 | PCX422007 | Flange Bolt ¼"-20 x ½" |
| 8 | PCX422008 | Handle |
| 9 | PCX422009 | Phillip Head Screw ¼" x 5/8" |
| 10 | PCX422010 | Acorn Nut ¼"-20 |
| 11 | PCX422011 | 2" Swivel Ball Casters |
| 12 | PCX422012 | Hex Nut 5/16"-18 |
| 13 | PCX422013 | Band Clamp |
| 14 | PCX422014 | Lock Nut M4-.7 |
| 15 | PCX422015 | Phillip Head Screw M4-.7 x 8 |
| 16 | PCX422016 | Hex Bolt ¼"-20 x 2 ½" |
| 17 | PCX422017 | Foam Window Gasket |
| 18 | PCX422018 | Dust Collection Drum Window (Acrylic) |
| 19 | PCX422019 | Rivet 4 x 8mm Window |
| 20 | PCX422020 | Vacuum Hose 1 ½" x 67" |
| 21 | PCX422021 | Foam Gasket 850mm x 35mm x 3mm |
| 22 | PCX422022 | Foam Gasket 1560mm x 35mm x 3mm |
| 23 | PCX422023 | Flat Washer ¼" |
| 24 | PCX422024 | Inlet Adaptor 6" x 4" x 2 |
| 28 | PCX422028 | Inlet Cap 4" |
| 29 | PCX422029 | Flange Nut ¼"-20 |
| 30 | PCX422030 | Flange Screws 10-24 x 3/8" |
| 31 | PCX422031 | Flange Nut ¼"-20 |
| 32 | PCX422032 | Dust Collection Drum Lid Latch |
| 33 | PCX422033 | Universal Reducer |
| 34 | PCX422034 | Open Ended Wrench 10mm/12mm |
| 35 | PCX422035 | Vacuum Ring |
| 36 | PCX422036 | Plastic Dust Collection Bag 30" x 41" |



WARRANTY

CRAFTEX 3 YEARS LIMITED WARRANTY

Crafttex warrants every product to be free from defects in materials and agrees to correct such defects where applicable. This warranty covers **three years** for parts and 90 days for labour (unless specified otherwise), to the original purchaser from the date of purchase but does not apply to malfunctions arising directly or indirectly from misuse, abuse, improper installation or assembly, negligence, accidents, repairs or alterations or lack of maintenance.

Proof of purchase is necessary.

All warranty claims are subject to inspection of such products or part thereof and Crafttex reserves the right to inspect any returned item before a refund or replacement may be issued.

This warranty shall not apply to consumable products such as blades, bits, belts, cutters, chisels, punches etceteras.

Crafttex shall in no event be liable for injuries, accidental or otherwise, death to persons or damage to property or for incidental contingent, special or consequential damages arising from the use of our products.

RETURNS, REPAIRS AND REPLACEMENTS

To return, repair, or replace a Crafttex product, you must visit the appropriate Busy Bee Tools showroom or call 1-800-461-BUSY. Crafttex is a brand of equipment that is exclusive to Busy Bee Tools.

For replacement parts directly from Busy Bee Tools, for this machine, please call 1-800-461-BUSY (2879), and have your credit card and part number handy.

- All returned merchandise will be subject to a minimum charge of 15% for re-stocking and handling with the following qualifications.
- Returns must be pre-authorized by us in writing.
- We do not accept *collect* shipments.
- Items returned for warranty purposes must be insured and shipped pre-paid to the nearest warehouse
- Returns must be accompanied with a copy of your original invoice as proof of purchase. Returns must be in an un-used condition and shipped in their original packaging a letter explaining your reason for the return. Incurred shipping and handling charges are not refundable.
- Busy Bee will repair or replace the item at our discretion and subject to our inspection.
- Repaired or replaced items will be returned to you pre-paid by our choice of carriers.
- Busy Bee reserves the right to refuse reimbursement or repairs or replacement if a third party without our prior authorization has carried out repairs to the item.
- Repairs made by Busy Bee are warranted for 30 days on parts and labour.
- Any unforeseen repair charges will be reported to you for acceptance prior to making the repairs.
- The Busy Bee Parts & Service Departments are fully equipped to do repairs on all products purchased from us with the exception of some products that require the return to their authorized repair depots. A Busy Bee representative will provide you with the necessary information to have this done.

