



# MODEL CX423

## MINI DUST SEPARATOR

### USER MANUAL



COPYRIGHT © 2019 BY CRAFTEX INDUSTRIES INC.

NO PORTION OF THIS MANUAL MAY BE PRODUCED WITHOUT THE WRITTEN CONSENT OF CRAFTEX INDUSTRIES INC.



# TABLE OF CONTENTS

Package Contents .....	3
Assembly .....	3
Attaching the Mini Separator to Your Vacuum System .....	5
Parts Diagram and List.....	.6
Warranty.....	.8

## CX423 MINI DUST SEPARATOR

The CX423 Mini Dust Separator when used conjunction with your dust collector or Shop Vac System will separate the majority of dust from the air stream prior to reaching the collector filter. This is intended to help prevent your dust collection system's filter from clogging, allowing you to work safer and longer while saving you valuable time and money on replacement filters and bags! This also serves to protect your collector's motor and impeller from debris such as large wood chunks and shop debris.

### PACKAGE CONTENTS

- 1 Lower Bucket
- 1 Upper Bucket
- 1 Band Clamp
- 1 Upper Bucket Cover
- 1 Top Cover (Black)
- 2 Bucket Cover Handles
- 1 Upper Bucket Handle
- 2 Upper Bucket Clamp Assemblies
- 4 Castors
- 1 Y – Pipe
- 1 1-1/2" x 118mm Flex Hose
- 1 90 deg. Elbow
- 1 Hardware Package
- 1 Plastic Bag

### ASSEMBLY

1. Mount the four castors to the Lower Bucket through the holes provided on the bottom as per



Fig.1

2. Mount the two Bucket Cover Handles (using the ¼ x 5/8 Phillips Hd. Screws) and mount the Top Cover to the Bucket Cover. Attach the 90 Deg Elbow into the underside of the Top Cover in the off center opening. Point the elbow in the direction of the circumference of the bucket to create the cyclonic airflow.



Fig.2

3. Using the M4 x 12 mm self tapping screws mount and fasten the Y – Pipe to the Bucket Cover as shown in Fig. 3.



Fig.3

4. Mount the Upper Bucket Handle to the Upper Bucket using the  $\frac{1}{4}$  x  $\frac{5}{8}$  Phillips Hd. Screws. See Fig. 4.



Fig.4

5. Mount the Upper Bucket Clamp Assemblies to the top sides of the Upper Bucket using the M4 x 8mm Phillips Hd screws and M4 Nylon Locknuts provided.



Fig.5

6. Set the Upper Bucket on top of the Lower Bucket and secure together using the Band Clamp. Securely tighten the band clamp with  $\frac{1}{4}$ -20 x 2-1/2 Hex Cap Screw,  $\frac{1}{4}$ -20 Hex Nut and  $\frac{1}{4}$ " flat-washer as shown in Fig. 6.



Fig.6

7. Slide the 1-1/2" Flex Hose over the port on the bottom edge of the Lower Bucket and then slide the opposite end over the port on the side of the y – Pipe. Secure both ends with the hose clamps provided.



Fig.7



Fig.8

8. Insert the plastic collector bag into the Bucket and curl a portion of the open end over the top edge of the collector bucket. Place the assembled Bucket Cover on top of the Bucket Assembly and secure with the side clamps. Your Mini Dust Separator is now assembled.



Fig.9



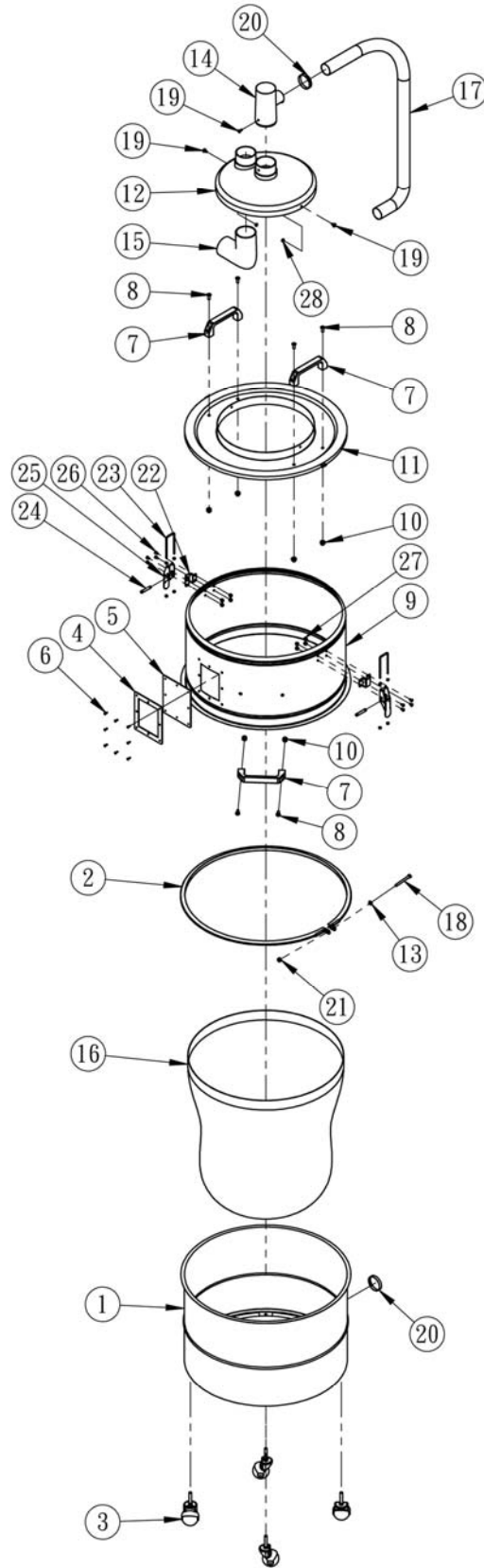
Fig.10

## ATTACHING THE MINI SEPARATOR TO YOUR VACUUM SYSTEM

Using a 2-1/2" Flex hose attach you Vacuum systems intake to the top of the Y-Pipe and using a 2-1/2" flex hose connect that to your machine.

## Parts Diagram and List

NO.	DESCRIPTION	PART NO.	BB PART NO.	Q'TY
1	LOWER COLLECTION DRUM	045-018	PCX423001	1
2	BAND CLAMP	045-0011	PCX423002	1
3	CASTER,2"SWIVEL BALL	014-0005-5	PCX423003	4
4	FOAM WINDOW GASKET	016-0637	PCX423004	1
5	COLLECTION DRUM WINDDOW(ACRYLIC)	016-0636	PCX423005	1
6	RIVET 4-2 WINDOW AL	004-1602	PCX423006	8
7	HANDLE	025-0524	PCX423007	3
8	PHLP HD SCR 1/4" X 5/8"	004-0103	PCX423008	6
9	UPPER COLLECTION DRUM	037-4429	PCX423009	1
10	ACORN NUT 1/4-20	004-2119	PCX423010	6
11	UPPER BUKET COVER	045-0092	PCX423011	1
12	COVER(ORANGE)	047-0016	PCX423012	1
13	FLAT WASHERS 1/4" x 13	004-1002	PCX423013	1
14	Y-PIPE	023-0114	PCX423014	1
15	BENT PIPE 90°(TRANSPARENT)	047-0017	PCX423015	1
16	DUST BAG	031-0301	PCX423016	1
17	VACUUM HOSE 1-1/2" X 1180mm	015-0511	PCX423017	1
18	HEX BOLT 1/4 X 2-1/2	004-2136	PCX423018	1
19	FLANGE SCREW 3/16"X 3/8"	004-0232	PCX423019	3
20	HOSE CLAMP 1-3/4	021-0110	PCX423020	2
21	FLANGE NUT 1/4"	004-0942	PCX423021	1
22	CLAMP BASE PLATE	037-5105	PCX423022	2
23	HOOKS	032-0117	PCX423023	2
24	SUPPORT ROD	036-2328	PCX423024	2
25	CLAMP PLATE	037-4901	PCX423025	2
26	PHLP HD SCR M4 X 8mm	004-0322-1	PCX423026	8
27	FLANGE NUT M4	004-0962	PCX423027	8
28	HEX NUT 3/16"	004-0902	PCX423028	1





## WARRANTY

### CRAFTEX 3 YEARS LIMITED WARRANTY

Crafttex warrants every product to be free from defects in materials and agrees to correct such defects where applicable. This warranty covers **three years** for parts and 90 days for labour (unless specified otherwise), to the original purchaser from the date of purchase but does not apply to malfunctions arising directly or indirectly from misuse, abuse, improper installation or assembly, negligence, accidents, repairs or alterations or lack of maintenance.

*Proof of purchase is necessary.*

All warranty claims are subject to inspection of such products or part thereof and Crafttex reserves the right to inspect any returned item before a refund or replacement may be issued.

This warranty shall not apply to consumable products such as blades, bits, belts, cutters, chisels, punches etceteras.

Crafttex shall in no event be liable for injuries, accidental or otherwise, death to persons or damage to property or for incidental contingent, special or consequential damages arising from the use of our products.

### RETURNS, REPAIRS AND REPLACEMENTS

To return, repair, or replace a Crafttex product, you must visit the appropriate Busy Bee Tools showroom or call 1-800-461-BUSY. Crafttex is a brand of equipment that is exclusive to Busy Bee Tools. For replacement parts directly from Busy Bee Tools, for this machine, please call 1-800-461-BUSY (2879), and have your credit card and part number handy.

- All returned merchandise will be subject to a minimum charge of 15% for re-stocking and handling with the following qualifications.
- Returns must be pre-authorized by us in writing.
- We do not accept *collect* shipments.
- Items returned for warranty purposes must be insured and shipped pre-paid to the nearest warehouse
- Returns must be accompanied with a copy of your original invoice as proof of purchase. Returns must be in an un-used condition and shipped in their original packaging a letter explaining your reason for the return. Incurred shipping and handling charges are not refundable.
- Busy Bee will repair or replace the item at our discretion and subject to our inspection.
- Repaired or replaced items will be returned to you pre-paid by our choice of carriers.
- Busy Bee reserves the right to refuse reimbursement or repairs or replacement if a third party without our prior authorization has carried out repairs to the item.
- Repairs made by Busy Bee are warranted for 30 days on parts and labour.
- Any unforeseen repair charges will be reported to you for acceptance prior to making the repairs.



- The Busy Bee Parts & Service Departments are fully equipped to do repairs on all products purchased from us with the exception of some products that require the return to their authorized repair depots. A Busy Bee representative will provide you with the necessary information to have this done.