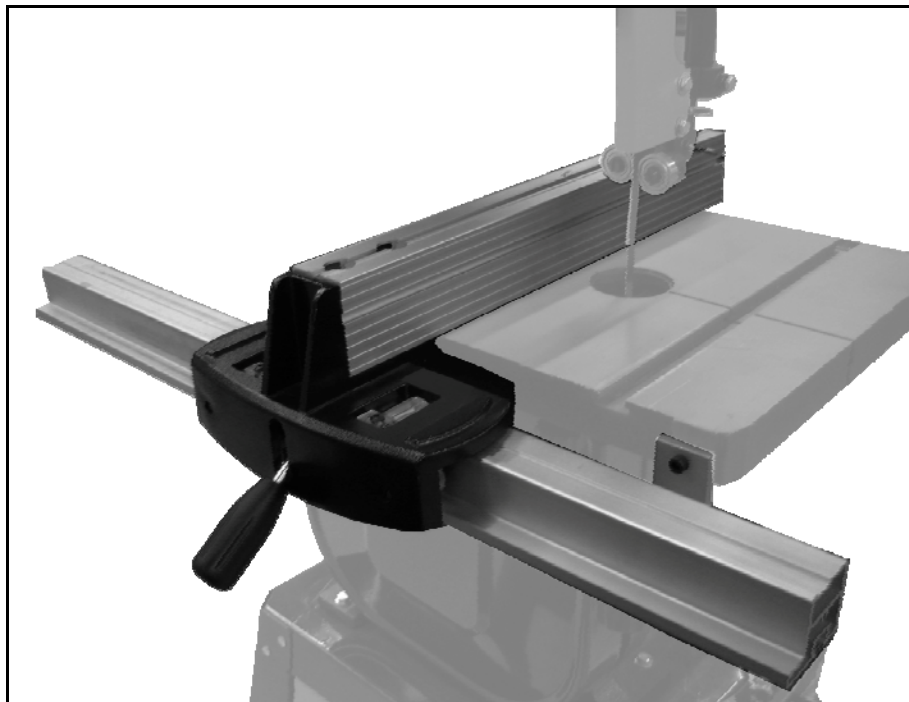




# MODEL CXBSFENCE

## PRECISION BAND SAW FENCE

### USER MANUAL



**COPYRIGHT © 2018 BY CRAFTEX INDUSTRIES INC.**

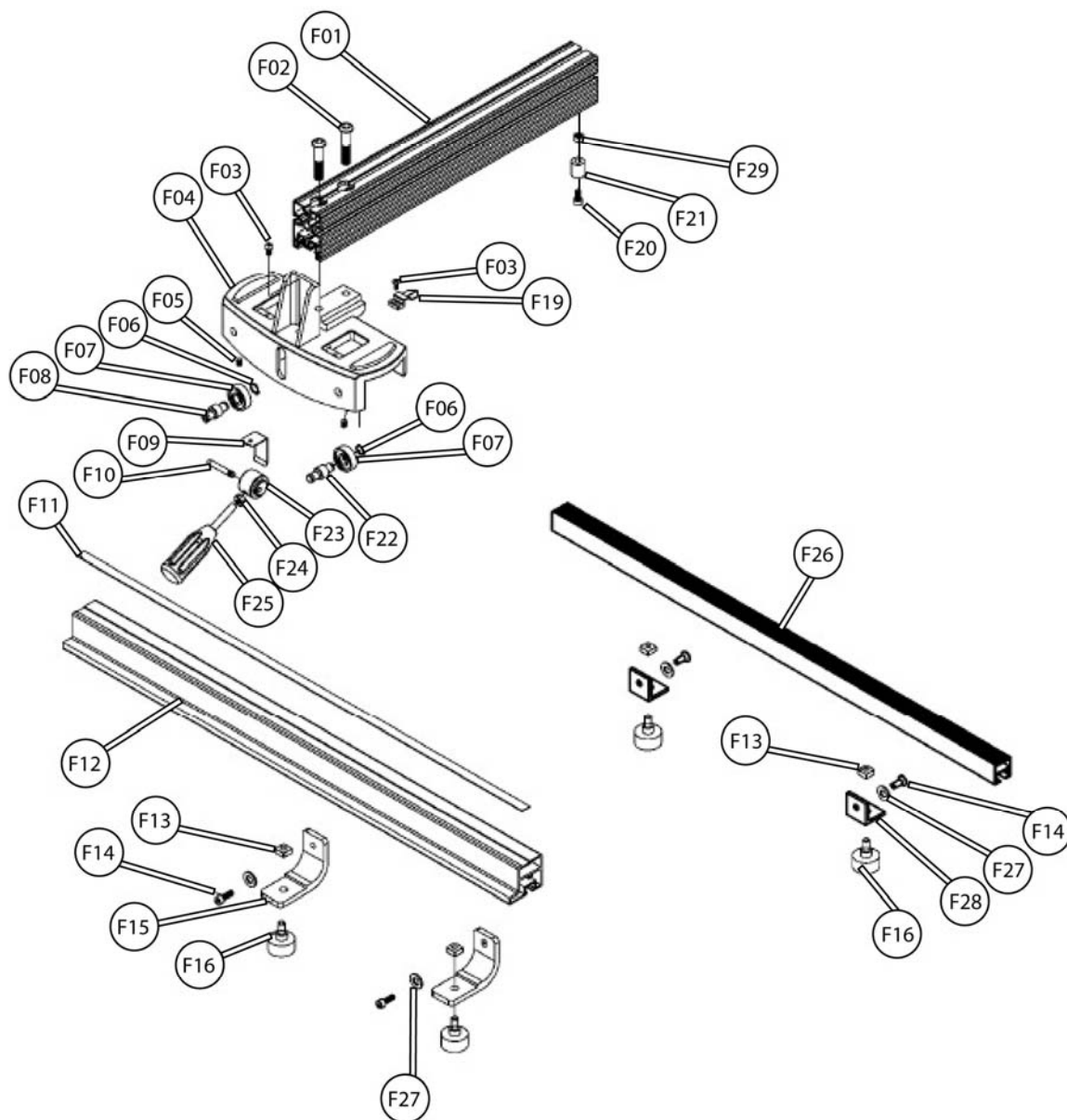
NO PORTION OF THIS MANUAL MAY BE PRODUCED WITHOUT  
THE WRITTEN CONSENT OF CRAFTEX INDUSTRIES INC.



## **CXBSFENCE INVENTORY BREAKDOWN**

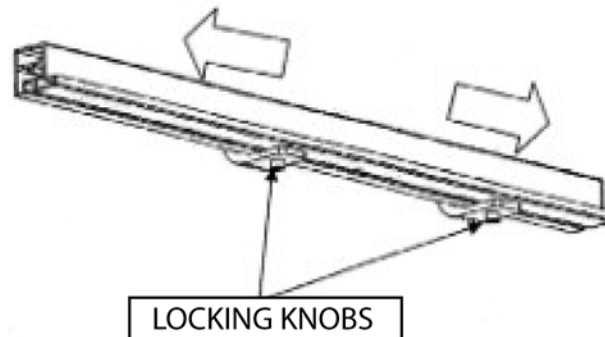
<b>REFERENCE NUMBER</b>	<b>DESCRIPTION</b>
F01	Fence Body
F02	Cap Screw 10 x 25mm
F03	Button Head Screws
F04	Fence Base
F05	Set Screw ¼ x ¼
F06	External Retaining Ring S10
F07	Bearing
F08	Eccentric shaft
F09	Pressure Plate
F10	Pin
F11	Scale
F12	Front Fence Rail
F13	Square Nut 5/16" <sup>h</sup>
F14	Hex Screw
F15	L Type Plate
F16	Knob 5/16" x 5/8"
F19	Pointer
F20	Cap Screws 6 x 12mm
F21	Runner
F22	Bearing Shaft
F23	Lock Mechanism
F24	Hex Bolt 8mm
F25	Fence Handle
F26	Rear Rail
F27	Flat Washer
F28	L Bracket

## CXBSFENCE PARTS DIAGRAM

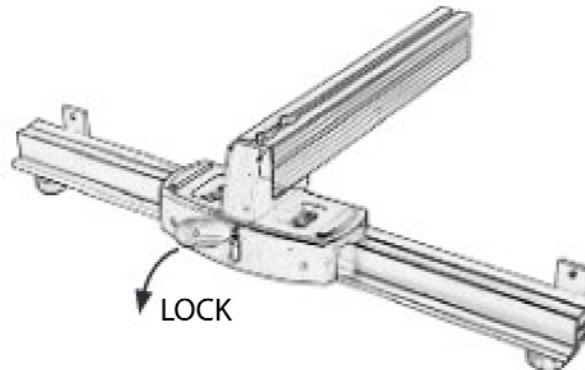


## **INSTALLATION OF CXBSFENCE**

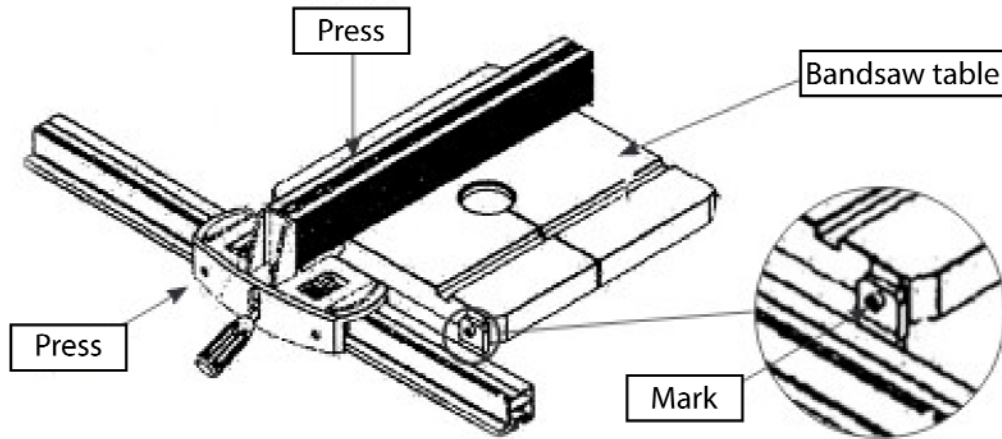
1. Place and hold the mounting brackets to the fence rail and loosely lock them in place with the two locking knobs.



2. Position the guide fence firmly on to the guide fence rail and press the handle down to lock it in place.



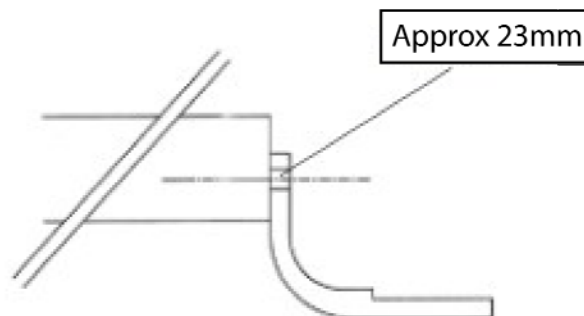
3. Place the fence on the table and hold in place using a clamp preferably. Space the mounting brackets as far apart as possible then tighten the locking knobs. Press the assembly to the front edge of the table top and using a marking tool or centre punch mark the holes from the mounting brackets.



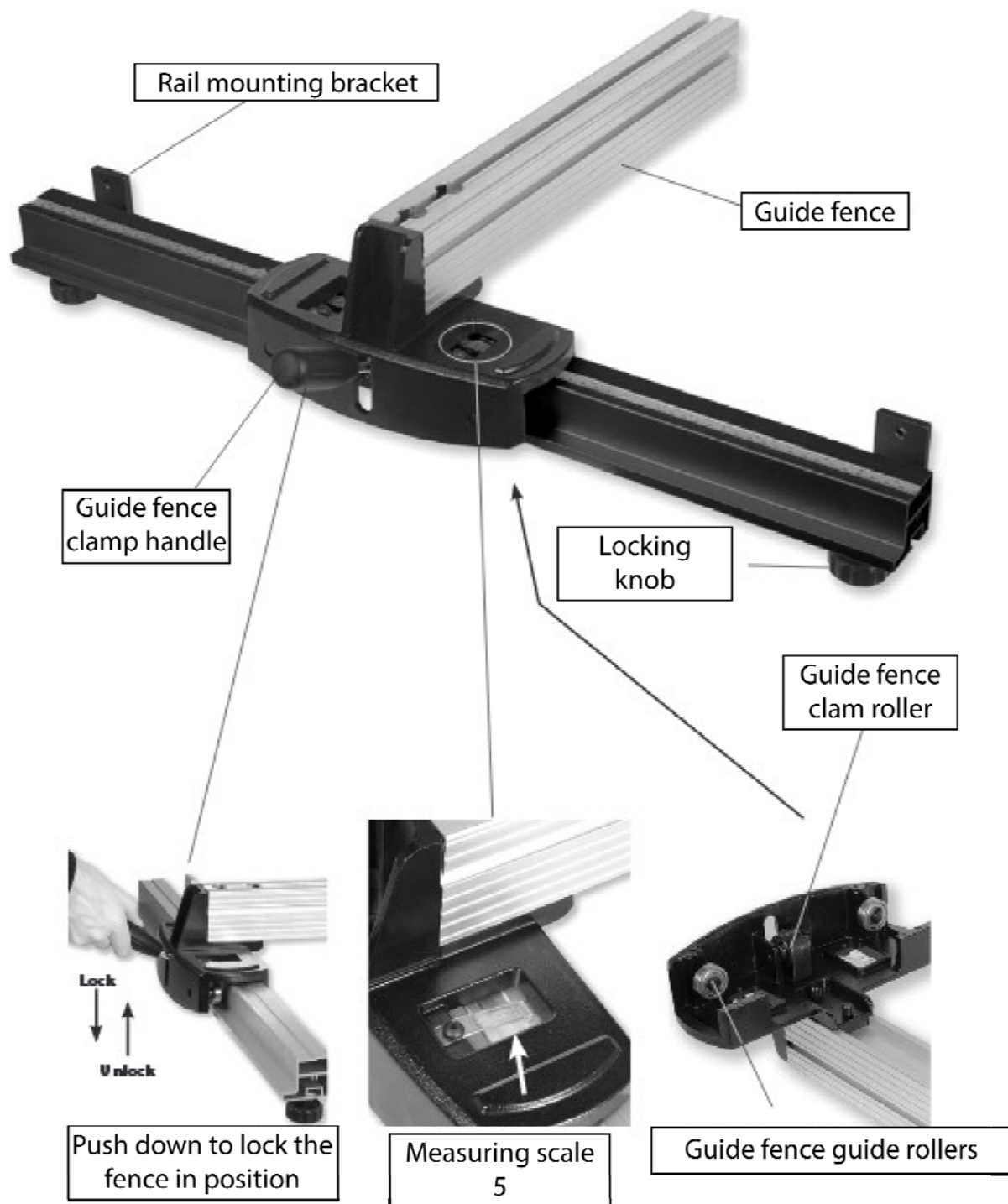
4. To install the rear fence rail line it up to the backside of the bandsaw table than clamp in place using a clamp. Again space the mounting brackets as far apart as possible. Using a marking tool or centre punch mark the holes of the rear rail mounting brackets.
5. Remove all clamps and brackets from band saw table surface. Once removed drill out your holes using a 5mm drill bit then thread the holes using an M6 tap.
6. Re-install fence and both rails but first apply the scale to the front guide rail.

### NOTE

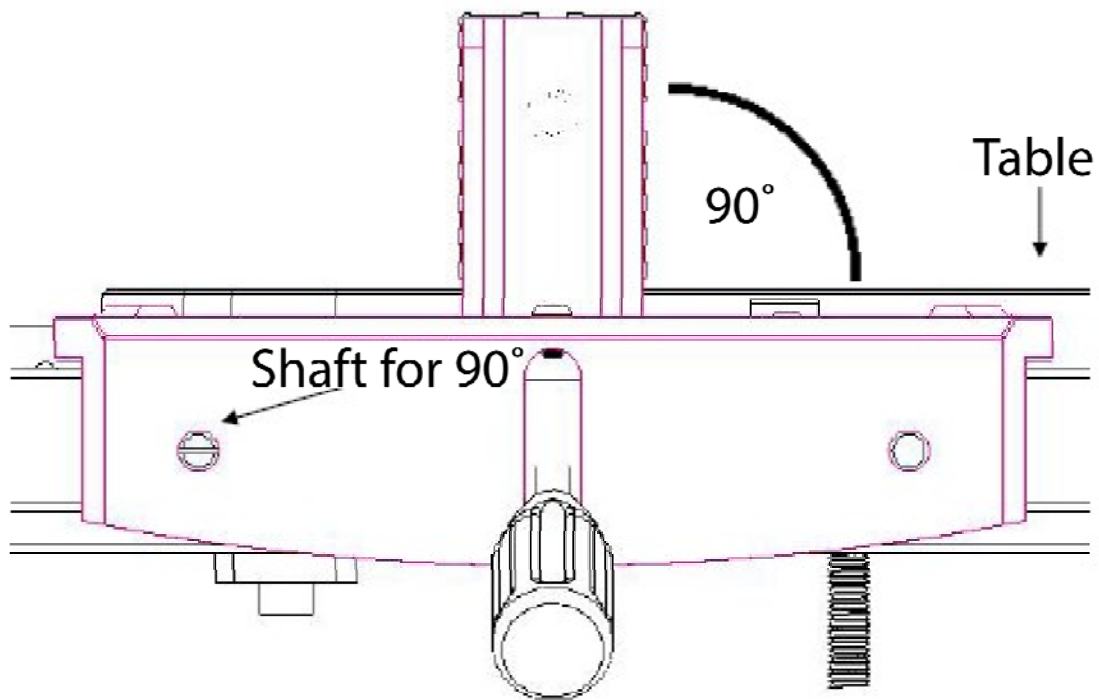
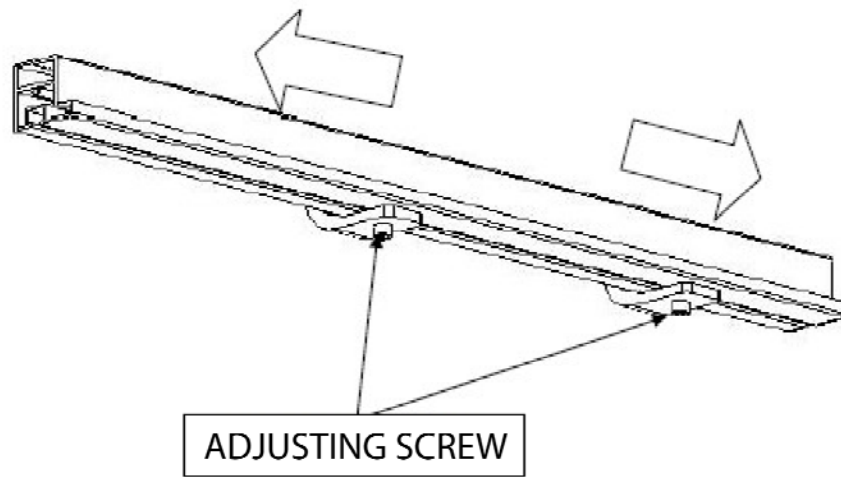
**The centre line between your marked holes should be approximately 23mm below the edge of the table.**

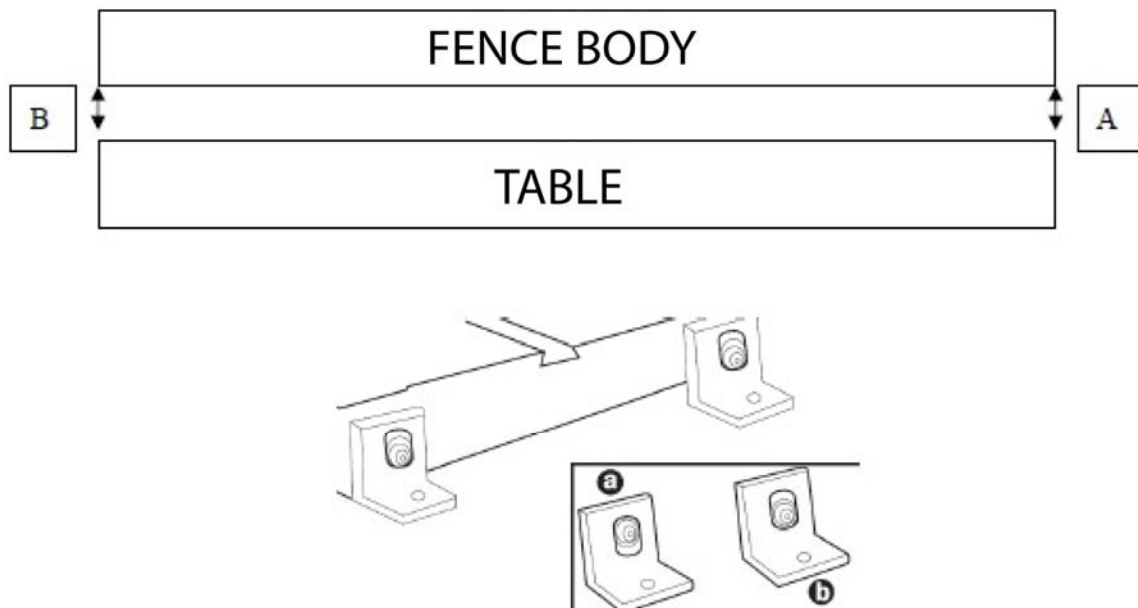


## CXBSFENCE ANATOMY



## FENCE AND RAIL ADJUSTMENTS





### **NOTE**

To level and adjust the height of the fence, loosen the bolts that hold the mounting brackets in place against the band saw table. The mounting brackets have elongated holes to allow for the raising or lowering of the fence rails. Level the front and back rails as needed using a precision square to ensure accuracy. Allow for the fence to be set approximately 1mm off the table surface to allow for easy adjusting of the fence during operations. Once you have your rails set tighten the bolts for mounting brackets to lock rails in to position.





## **CRAFTEX 1 YEARS LIMITED WARRANTY**

Craftex warrants every product to be free from defects in materials and agrees to correct such defects where applicable. This warranty covers **1 year** for parts and 90 days for labour (unless specified otherwise), to the original purchaser from the date of purchase but does not apply to malfunctions arising directly or indirectly from misuse, abuse, improper installation or assembly, negligence, accidents, repairs or alterations or lack of maintenance.

*Proof of purchase is necessary.*

All warranty claims are subject to inspection of such products or part thereof and Craftex reserves the right to inspect any returned item before a refund or replacement may be issued.

This warranty shall not apply to consumable products such as blades, bits, belts, cutters, chisels, punches etceteras.

Craftex shall in no event be liable for injuries, accidental or otherwise, death to persons or damage to property or for incidental contingent, special or consequential damages arising from the use of our products.

## **RETURNS, REPAIRS AND REPLACEMENTS**

To return, repair, or replace a Craftex product, you must visit the appropriate Busy Bee Tools showroom or call 1-800-461-BUSY. Craftex is a brand of equipment that is exclusive to Busy Bee Tools.

For replacement parts directly from Busy Bee Tools, for this machine, please call 1-800-461-BUSY (2879), and have your credit card and part number handy.

- All returned merchandise will be subject to a minimum charge of 15% for re-stocking and handling with the following qualifications.
- Returns must be pre-authorized by us in writing.
- We do not accept *collect* shipments.
- Items returned for warranty purposes must be insured and shipped pre-paid to the nearest warehouse
- Returns must be accompanied with a copy of your original invoice as proof of purchase. Returns must be in an un-used condition and shipped in their original packaging a letter explaining your reason for the return. Incurred shipping and handling charges are not refundable.
- Busy Bee will repair or replace the item at our discretion and subject to our inspection.
- Repaired or replaced items will be returned to you pre-paid by our choice of carriers.
- Busy Bee reserves the right to refuse reimbursement or repairs or replacement if a third party without our prior authorization has carried out repairs to the item.
- Repairs made by Busy Bee are warranted for 30 days on parts and labour.
- Any unforeseen repair charges will be reported to you for acceptance prior to making the repairs.
- The Busy Bee Parts & Service Departments are fully equipped to do repairs on all products purchased from us with the exception of some products that require the return to their authorized repair depots. A Busy Bee representative will provide you with the necessary information to have this done.

